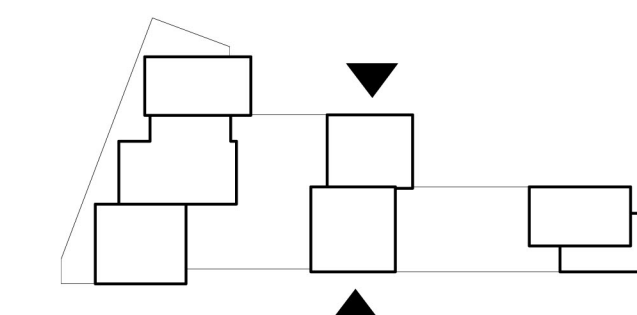
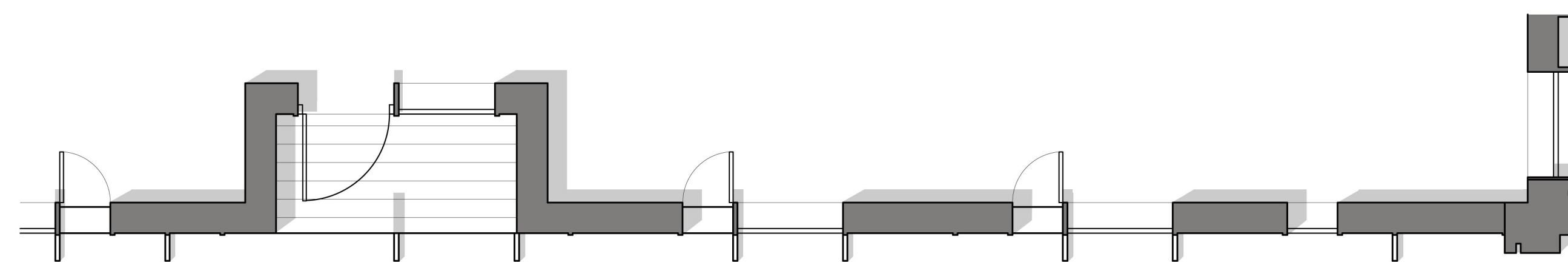
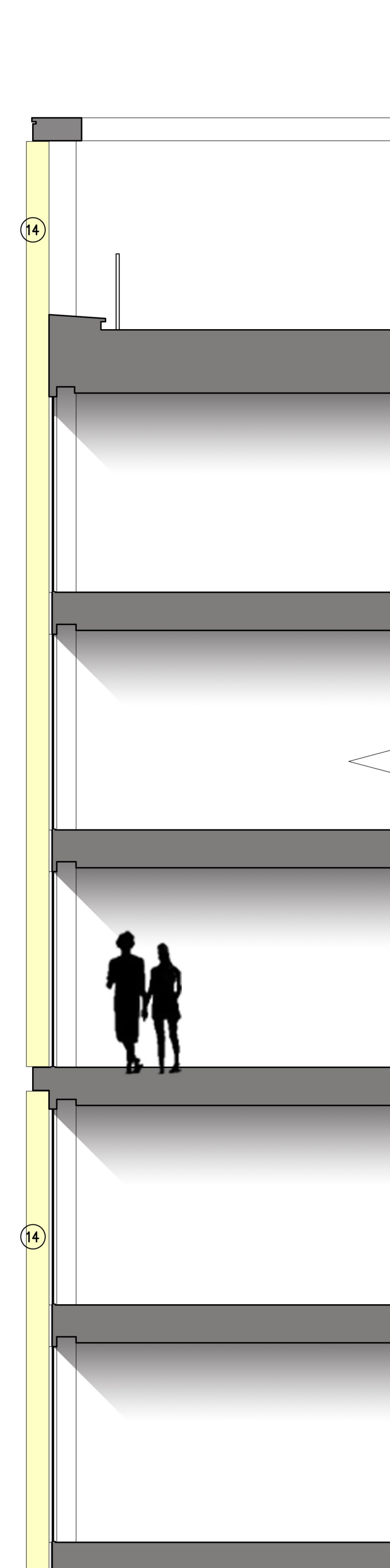
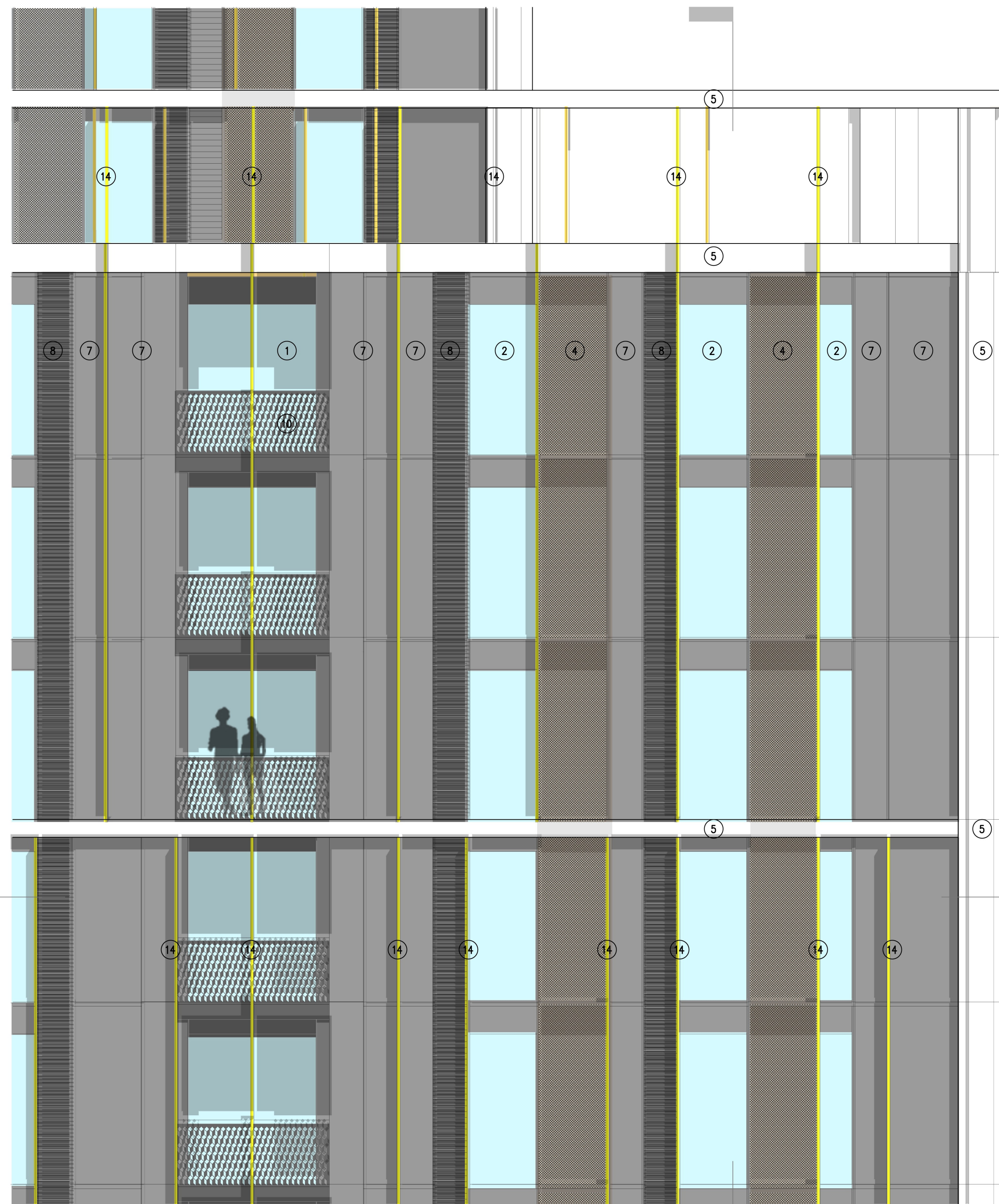


- NOTES**
- 1 The Contractor must check and confirm all dimensions
 - 2 All discrepancies must be reported and resolved by the Architect before works commence
 - 3 This drawing is not to be scaled
 - 4 All work and materials to be in accordance with current applicable Statutory Legislation and to comply with all relevant Codes of Practice and British Standards



MATERIALS KEY

- 1 Living Room Double Glazed Casement Doors w/t Adjacent Fixed Panel
- 2 Clear Double Glazed Unit
- 3 Double Glazed Unit w/t Mesh Frit Interlayer (Colour: Bronze 01)
- 4 Double Glazed Unit w/t Mesh Frit Interlayer (Colour: Bronze 02)
- 5 PPC Aluminium Feature Pressing
- 6 PPC Aluminium Insulated Bronze Colour Panel Pressing
- 7 PPC Aluminium Insulated Panel Pressing
- 8 PPC Aluminium Fixed Louvre System
- 9 Balcony w/t Etched Glass Guarding
- 10 Balcony w/t Vertical Flat Plate Steel Guarding and Handrail in PPC Finish
- 11 Juliet Balcony with Vertical Glass Guarding
- 12 Vertical Plate Metal Guarding in PPC Finish
- 13 Glass Guarding
- 14 PPC Capping Fin



Rev: Planning Issue Date: 24/06/16

Rolfe Judd

Architecture Planning Interiors
 Old Church Court, Claylands Road, The Oval, London SW8 1NZ
 T 020 7556 1500
 www.rolfe-judd.co.uk

Client
 Goldsworth Road Development LLP

Project
 Goldsworth Road (South)
 20-32 Goldsworth Road, Woking

Drawing
 Typical Residential North/South Elevation
 Bay Study

Scale: 1:50@A1 Date: June 16 Status: Planning

Job Number: 5712 Drawing Number: T(21)D02 Revision: -

This scale is 10cm in length when printed at the size indicated in the title block