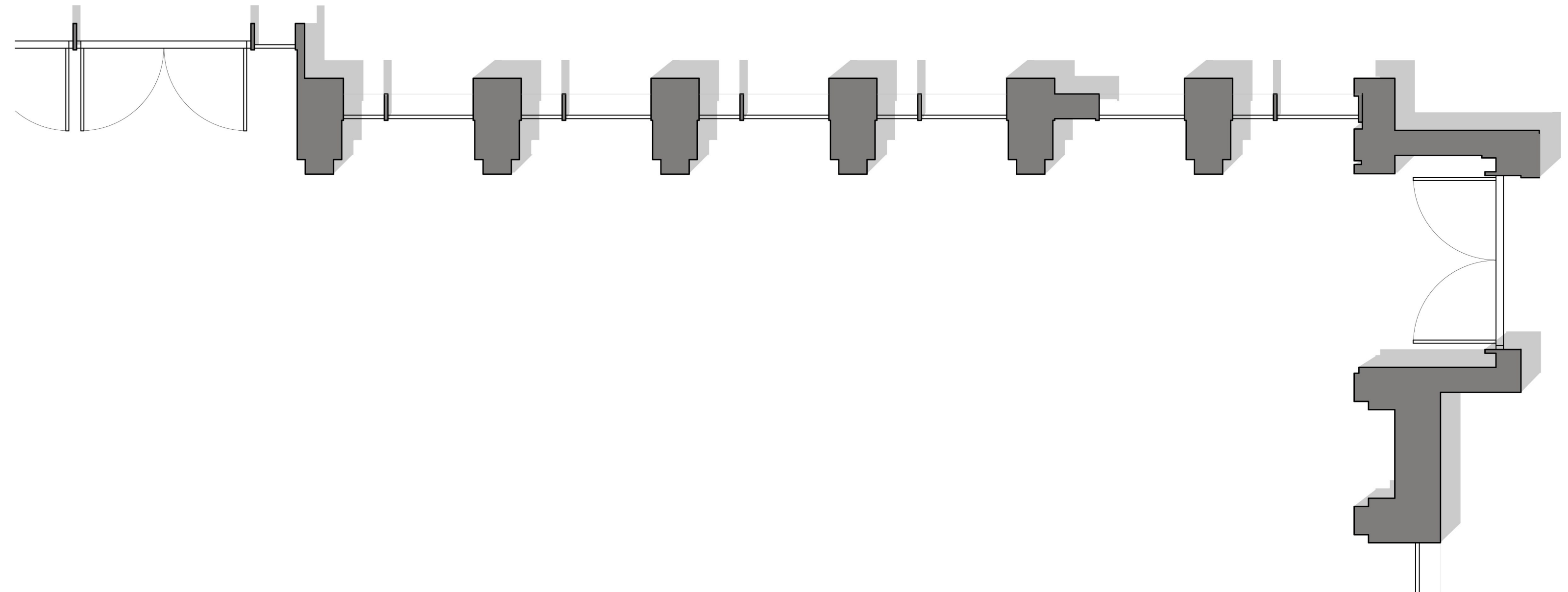
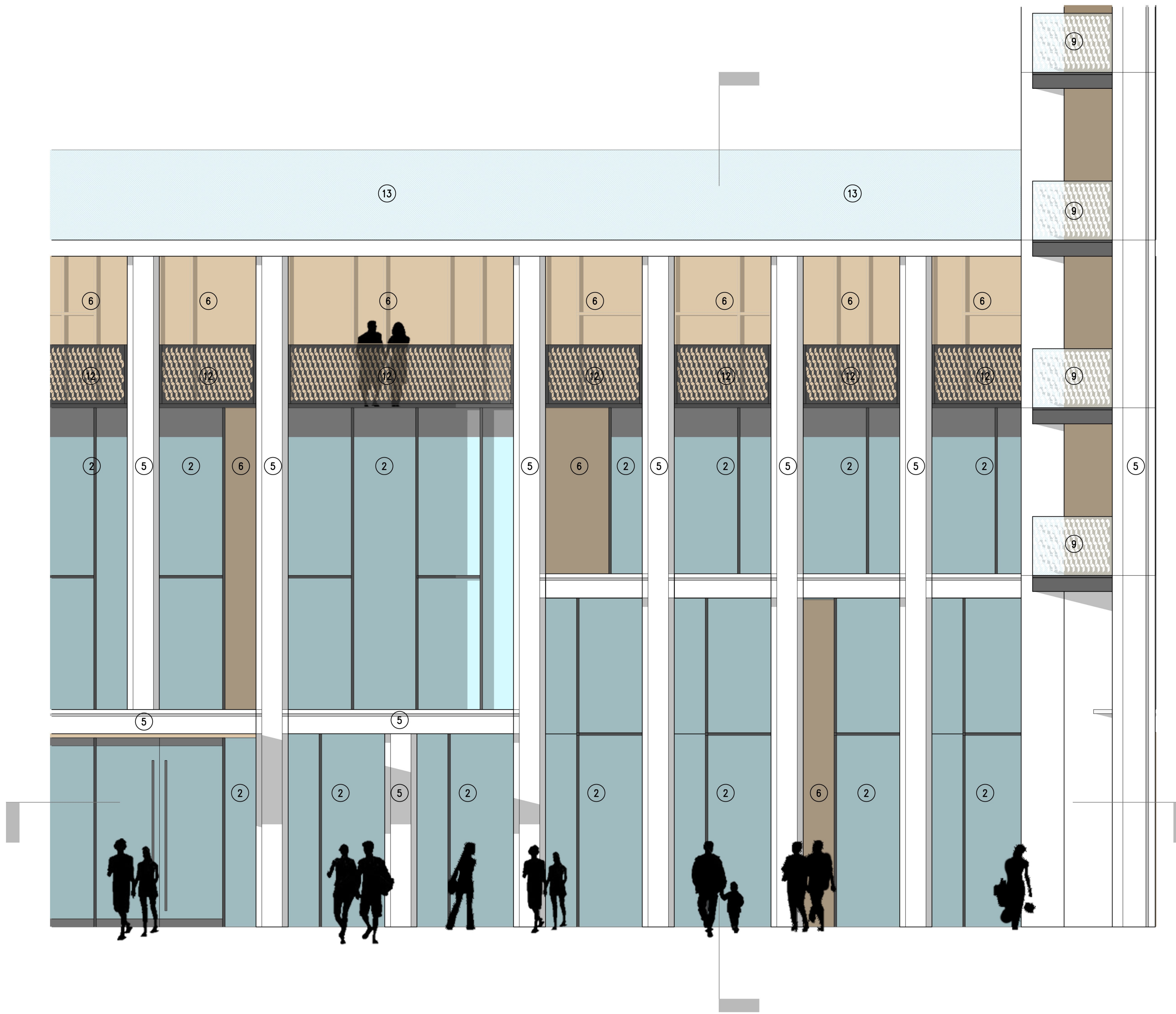
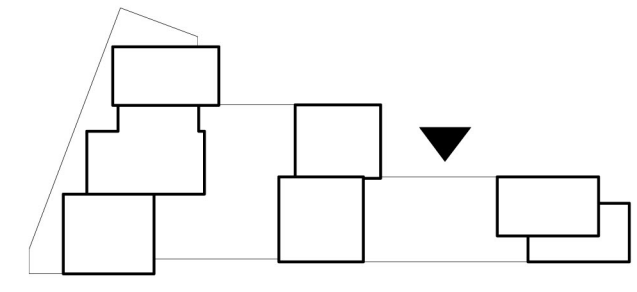


Resi Terrace
FFL 41.575



- NOTES
- 1 The Contractor must check and confirm all dimensions
 - 2 All discrepancies must be reported and resolved by the Architect before works commence
 - 3 This drawing is not to be scaled
 - 4 All work and materials to be in accordance with current applicable Statutory Legislation and to comply with all relevant Codes of Practice and British Standards



- MATERIALS KEY
- 1 Living Room Double Glazed Casement Doors w/t Adjacent Fixed Panel
 - 2 Clear Double Glazed Unit
 - 3 Double Glazed Unit w/t Mesh Frit Interlayer (Colour: Bronze 01)
 - 4 Double Glazed Unit w/t Mesh Frit Interlayer (Colour: Bronze 02)
 - 5 PPC Aluminium Feature Pressing
 - 6 PPC Aluminium Insulated Bronze Colour Panel Pressing
 - 7 PPC Aluminium Insulated Panel Pressing
 - 8 PPC Aluminium Fixed Louvre System
 - 9 Balcony w/t Etched Glass Guarding
 - 10 Balcony w/t Vertical Flat Plate Steel Guarding and Handrail in PPC Finish
 - 11 Juliet Balcony with Vertical Glass Guarding
 - 12 Vertical Plate Metal Guarding in PPC Finish
 - 13 Glass Guarding
 - 14 PPC Capping Fin

Planning Issue 24/06/16
Rev Date

Rolfe Judd
Architecture Planning Interiors
Old Church Court, Claylands Road, The Oval, London SW8 1NZ
T 020 7556 1500
www.rolfe-judd.co.uk

Client
Goldsworth Road Development LLP

Project
Goldsworth Road (South)
20-32 Goldsworth Road, Woking

Drawing
Typical Podium North Elevation
Bay Study

Scale Date Status
1:50@A1 June 16 Planning

Job Number Drawing Number Revision
5712 T(21)D06 -

G:\5712T_Series\T21\T21D06

This scale is 10cm in length when printed at the size indicated in the title block

