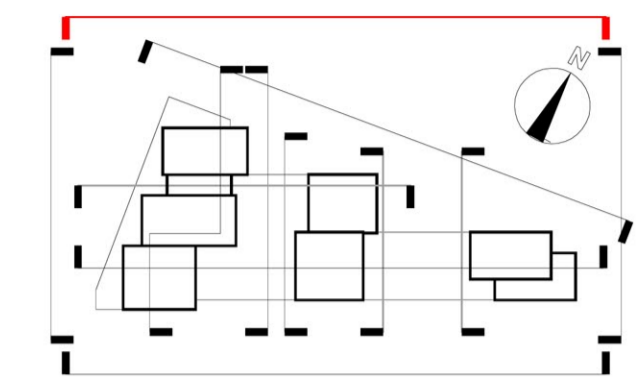


- Copyright Rolfe Judd Ltd
- NOTES
- 1 The Contractor must check and confirm all dimensions
  - 2 All discrepancies must be reported and resolved by the Architect before works commence
  - 3 This drawing is not to be scaled
  - 4 All work and materials to be in accordance with current applicable Statutory Legislation and to comply with all relevant Codes of Practice and British Standards



Victoria Square Residential Tower 1 lift overcan FFL 144.250

Victoria Square Residential Tower 1 FFL 140.300

Block A lower crown FFL 130.325

Block A lower roof FFL 120.600

Block A upper crown FFL 147.825

Block A upper roof FFL 142.100

Block B upper crown FFL 119.700

Block B upper roof FFL 116.975

Block B lower crown FFL 104.075

Block B lower roof FFL 101.300

Office upper crown FFL 80.700

Office upper roof FFL 76.850

Office lower crown FFL 72.700

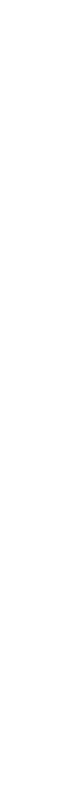
Office lower roof FFL 68.850

Block C crown FFL 94.700

Block C roof FFL 91.975

Fire Station Parapet Level FFL 52.300

This scale is 10mm in length when printed at the size indicated in the title block



Rev	Description	Date
A	Planning issue.	24/06/16
-	Planning drawings issued for Client's review.	13/06/16

**Rolfe Judd**  
 Architecture Planning Interiors  
 Old Church Court, Claylands Road, The Oval, London SW8 1NZ  
 T 020 7556 1500  
 www.rolfe-judd.co.uk

Client  
 Goldsworth Road Development LLP

Project  
 Goldsworth Road (South)  
 20-32 Goldsworth Road, Woking

Drawing  
 Proposed North Elevation

Scale	Date	Status
1:250 (A1)	June 16	Planning

Job Number Drawing Number Revision  
**5712 T(20)E02 A**

G:\5712T\_Series\T20\T20E02