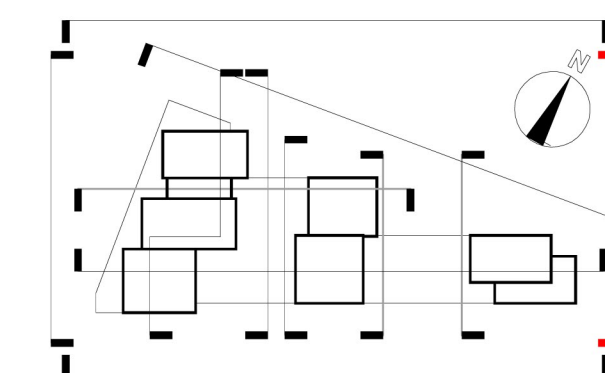


- NOTES
- 1 The Contractor must check and confirm all dimensions
 - 2 All discrepancies must be reported and resolved by the Architect before works commence
 - 3 This drawing is not to be scaled
 - 4 All work and materials to be in accordance with current applicable Statutory Legislation and to comply with all relevant Codes of Practice and British Standards



Block A upper crown
FFL 147,253

Block A lower roof
FFL 145,100

Block A lower crown
FFL 133,325

Block A lower roof
FFL 132,800

Block C crown
FFL 94,700

Block C roof
FFL 91,975

Block B lower crown
FFL 104,075

Block B lower roof
FFL 101,350

Office lower crown
FFL 72,700

Office lower roof
FFL 68,900

Align Tower
(without mast)

This scale is 10cm in length when printed at the size indicated in the title block



| | | |
|-----|--|----------|
| A | Planning issue | 24/06/16 |
| - | Planning drawings issued for Client's review | 13/06/16 |
| Rev | | Date |

Rolfe Judd

Architecture Planning Interiors
Old Church Court, Claylands Road, The Oval, London SW8 1NZ
T 020 7556 1500
www.rolfe-judd.co.uk

Client
Goldsworth Road Development LLP

Project
Goldsworth Road (South)
20-32 Goldsworth Road, Woking

Drawing
Proposed East Elevation

Scale 1:250 (A1) Date June 16 Status Planning

Job Number 5712 Drawing Number T(20)E05 Revision A