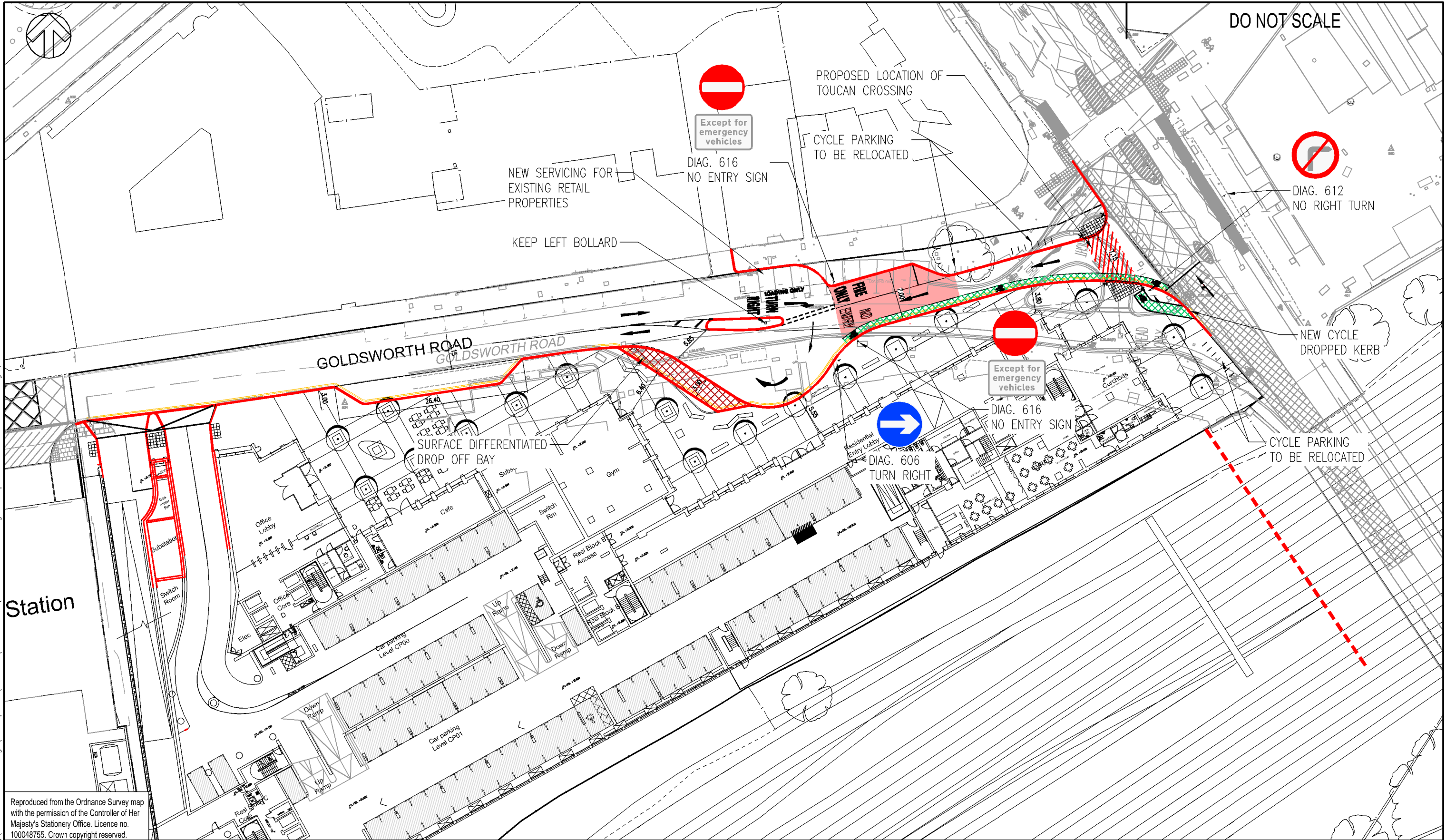


L:\70002248 - Goldsworth Road, Woking\Development\AUTOCAD\SK Sketches\70002248-SK-19.dwg 08 September 2016 15:41:46 Manger, Robert



Reproduced from the Ordnance Survey map with the permission of the Controller of Her Majesty's Stationery Office. Licence no. 100048755. Crown copyright reserved.

REV	DATE	BY	DESCRIPTION	CHK	APD
G	08/09/16	RJM	CYCLE PARKING ADDED	AF	AF
F	23/06/16	RJM	UPDATED ARCHITECTS PLANS	AF	AF
E	27/05/16	RJM	UPDATED FOLLOWING SAFETY AUDIT	AF	AF
D	27/04/16	RJM	MINOR AMENDMENTS	AF	AF
C	13/04/16	RJM	UPDATED FOLLOWING SAFETY AUDIT	AF	AF

DRAWING STATUS: FOR INFORMATION ONLY



WSP House, 70 Chancery Lane, London, WC2A 1AF
 Tel: +44 (0)20 7314 5000 Fax: +44 (0)20 7314 5099
<http://www.wspgroup.com>

CLIENT:	PRIME PLACE	PROJECT:	GOLDSWORTH ROAD, WOKING	
ARCHITECT:	ROLFE-JUDD	TITLE:	PROPOSED TURNING HEAD & ALTERNATIVE ACCESS	

SCALE @ A3:	1:500	CHECKED:	AF	APPROVED:	AF
CAD FILE:	70002248-SK-19.DWG	DESIGN-DRAWN:	RJM	DATE:	September 16
PROJECT No:	70002248	DRAWING No:	70002248-SK-19	REV:	G
© WSP Group Ltd					