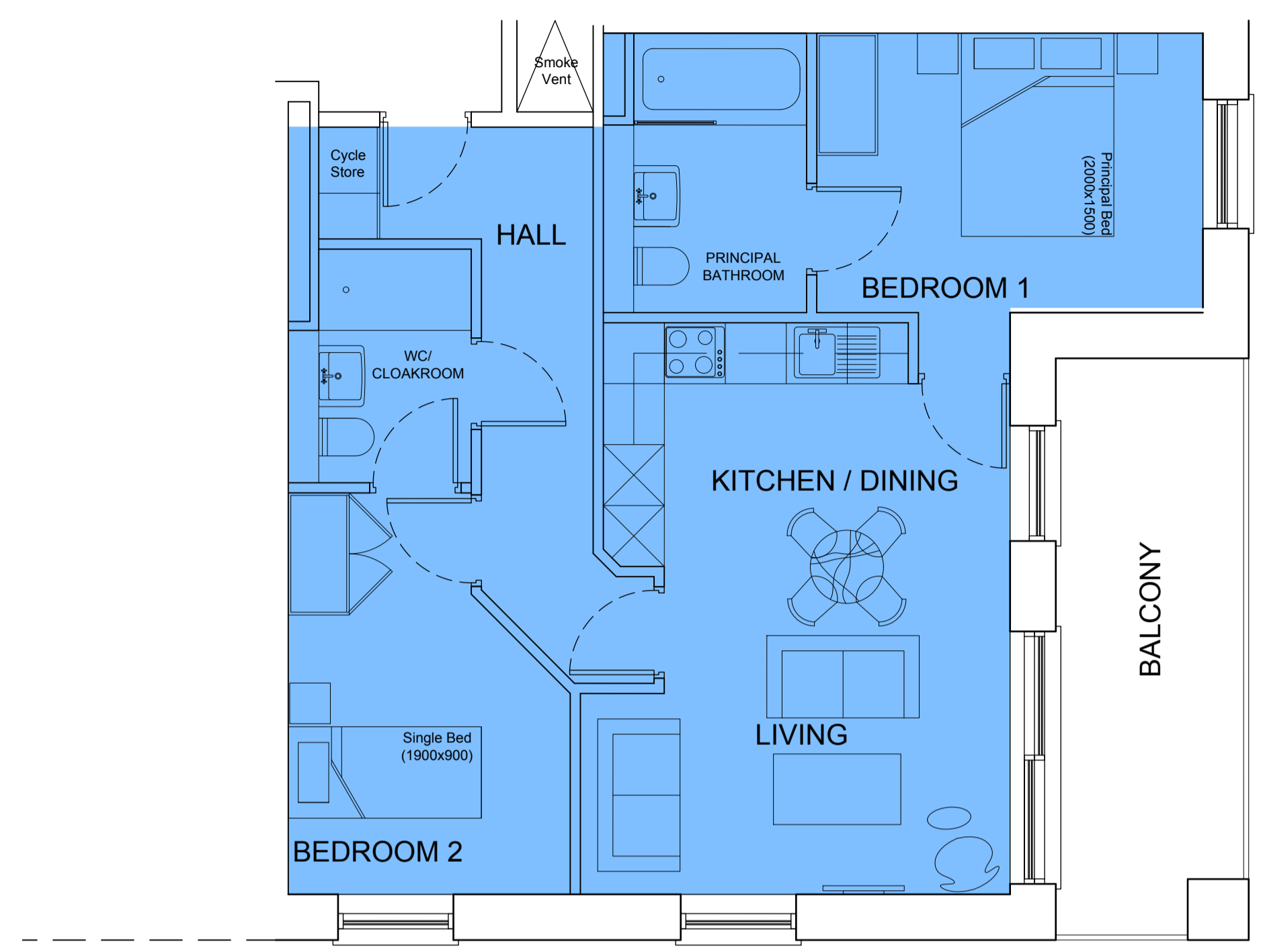
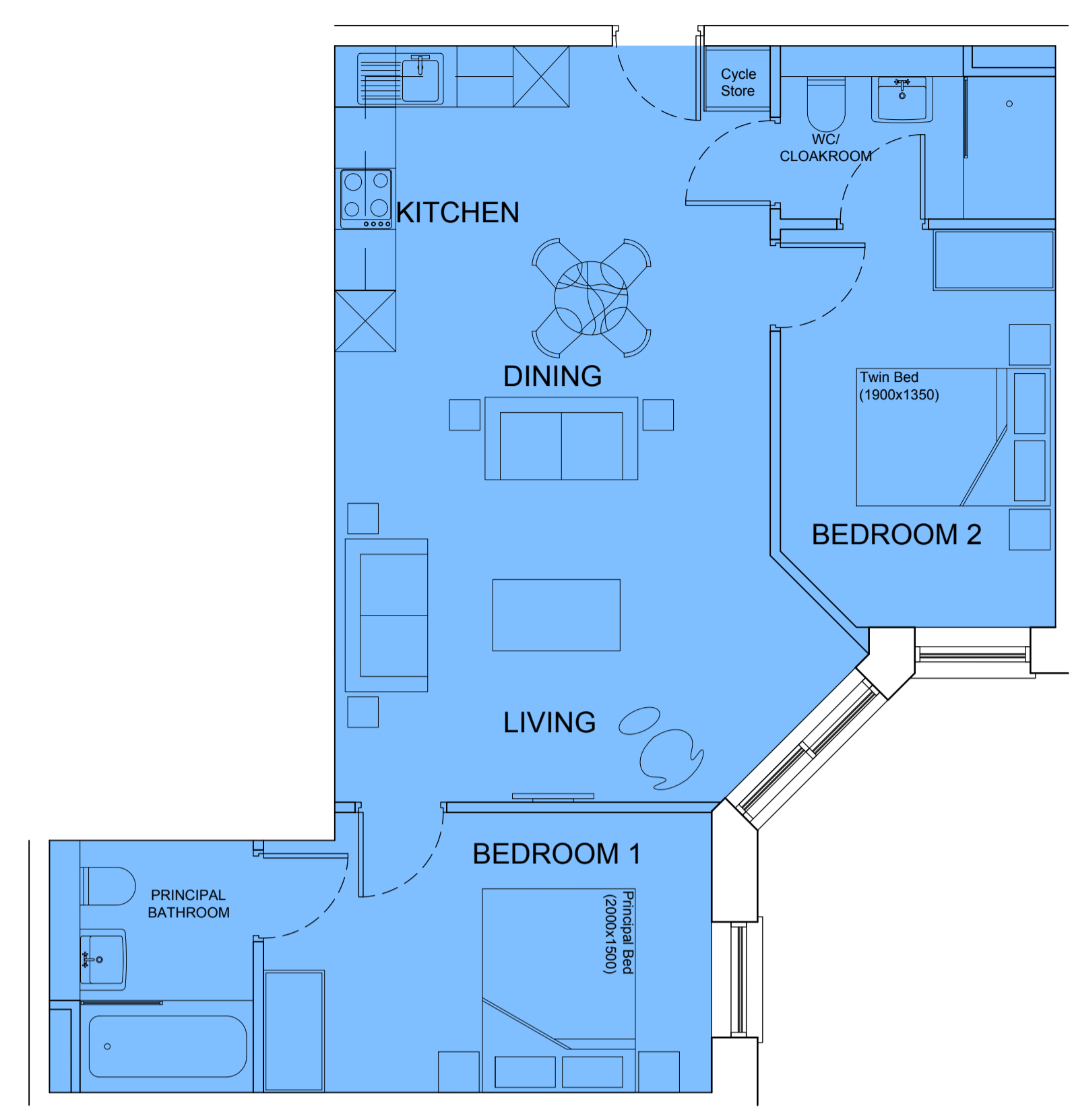


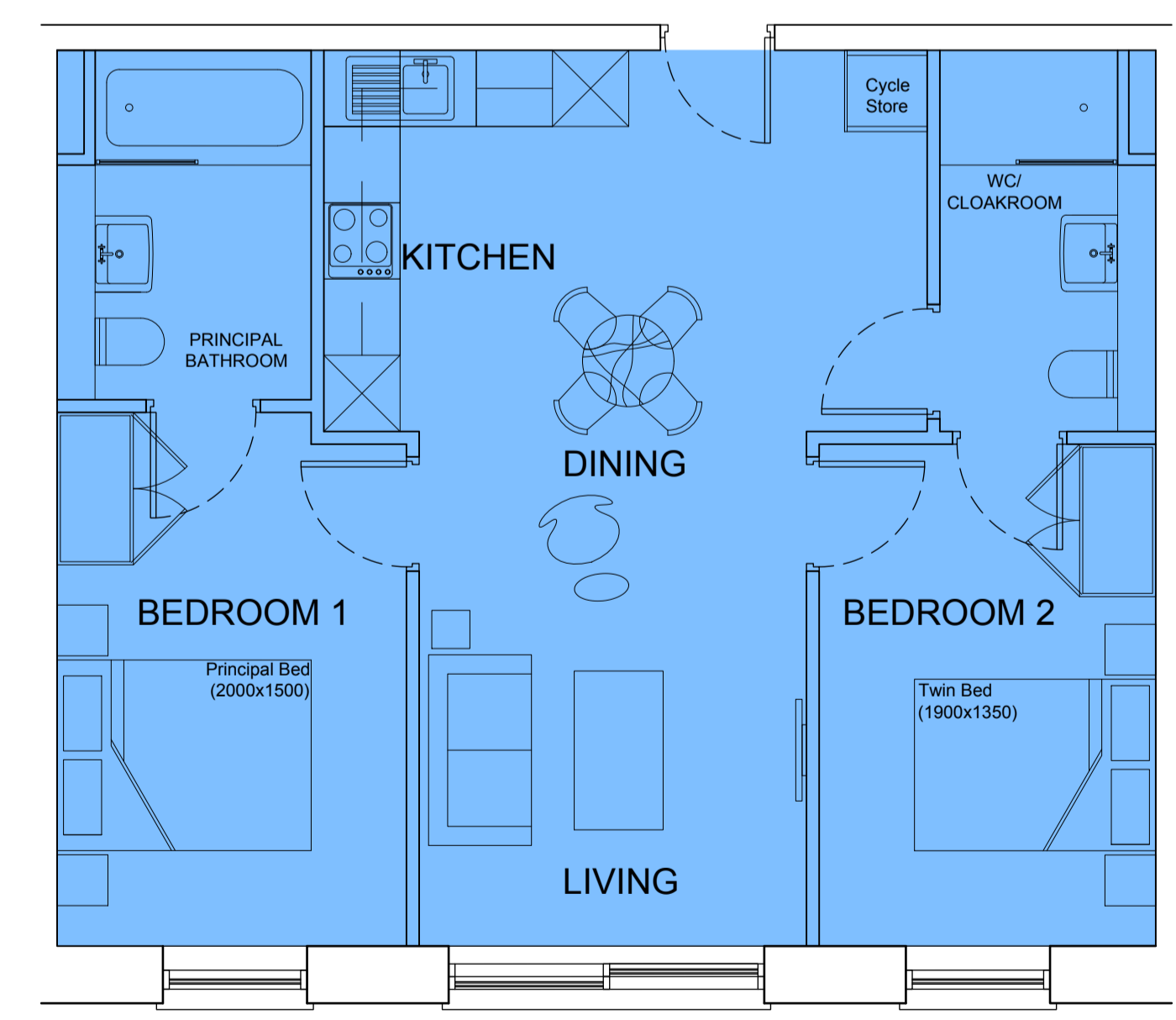
NOTE:
FOR EXTERNAL SPACES REFER TO GENERAL
ARRANGEMENT PLANS



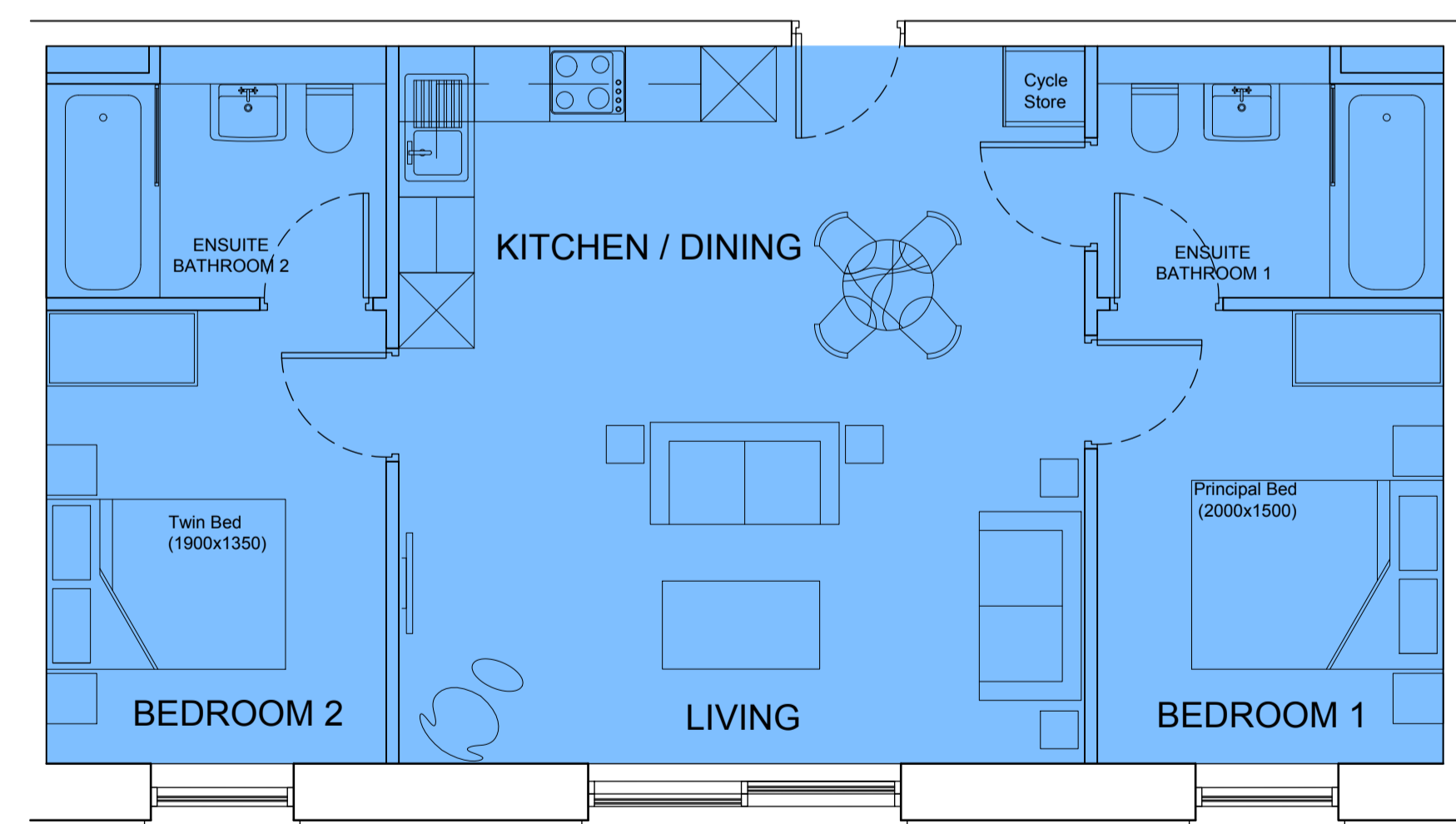
2 BED
APARTMENT
(TYPE 1)



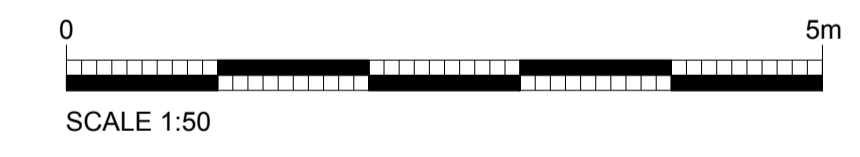
2 BED
APARTMENT
(TYPE 2)



2 BED
APARTMENT
(TYPE 3)



2 BED
APARTMENT
(TYPE 4)



rev	description	drawn	auth	date

© LEACH RHODES WALKER 2001

LeachRhodesWalker
Architects

info@lrw.co.uk | www.lrw.co.uk
50 Dearmans Place Manchester M3 5LH
Manchester London Bucharest
+44 (0)161 833 0211 +44 (0)207 993 1363 +40 (21)650 4026

client WOKING FOOTBALL CLUB		
project CARDINAL COURT INC. WOKING FOOTBALL CLUB		
project no 7884	drawing no L(00)170	rev F
description UnitTypes 2 Bedroom Apartment		
scale 1:50@ A1	date drawn 08.10.19	drawn by RB
authorised by CJG		
purpose of issue planning <input type="checkbox"/> building regs <input type="checkbox"/> tender <input type="checkbox"/> comment <input type="checkbox"/> approval <input checked="" type="checkbox"/> construction <input type="checkbox"/>		