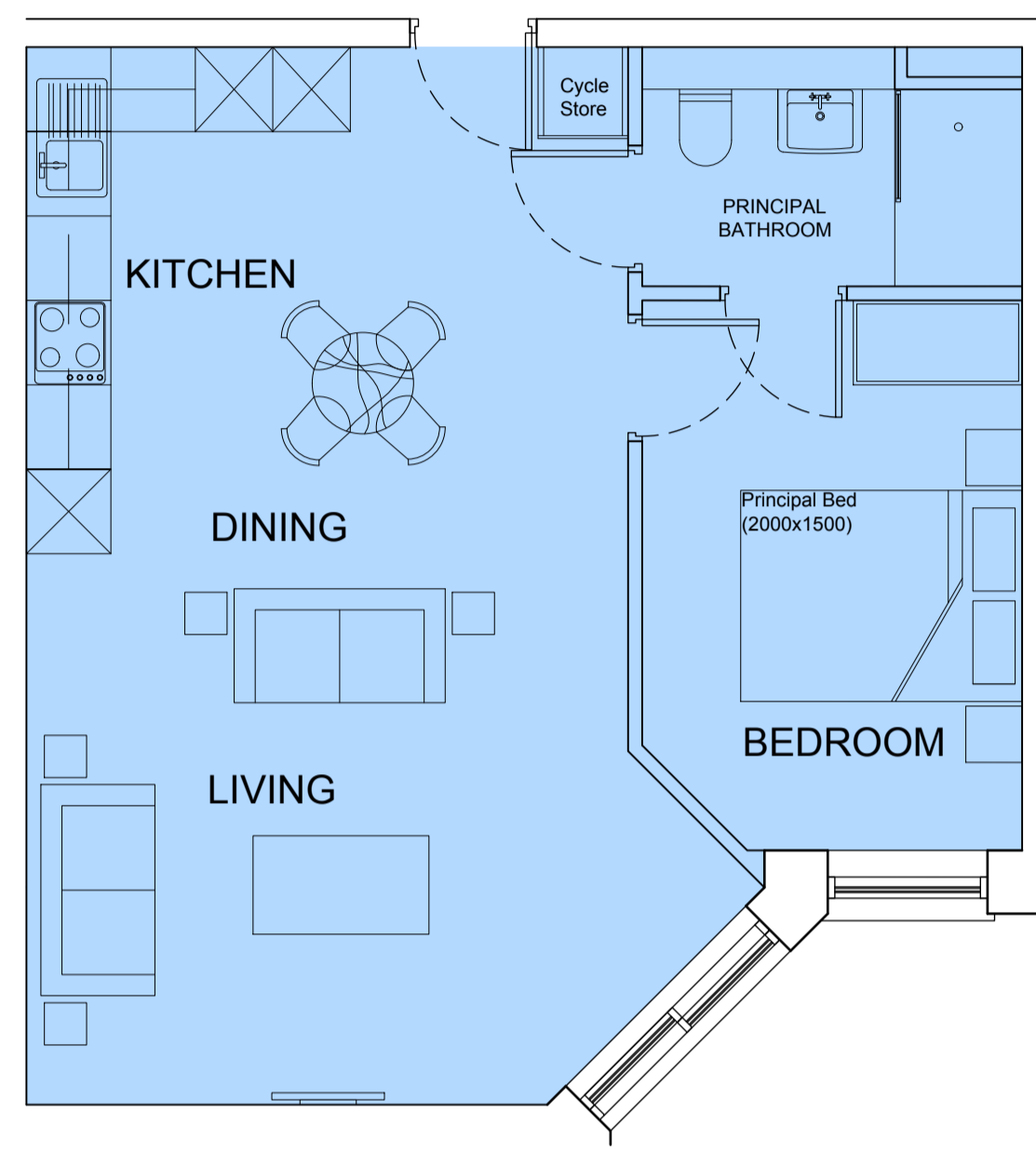
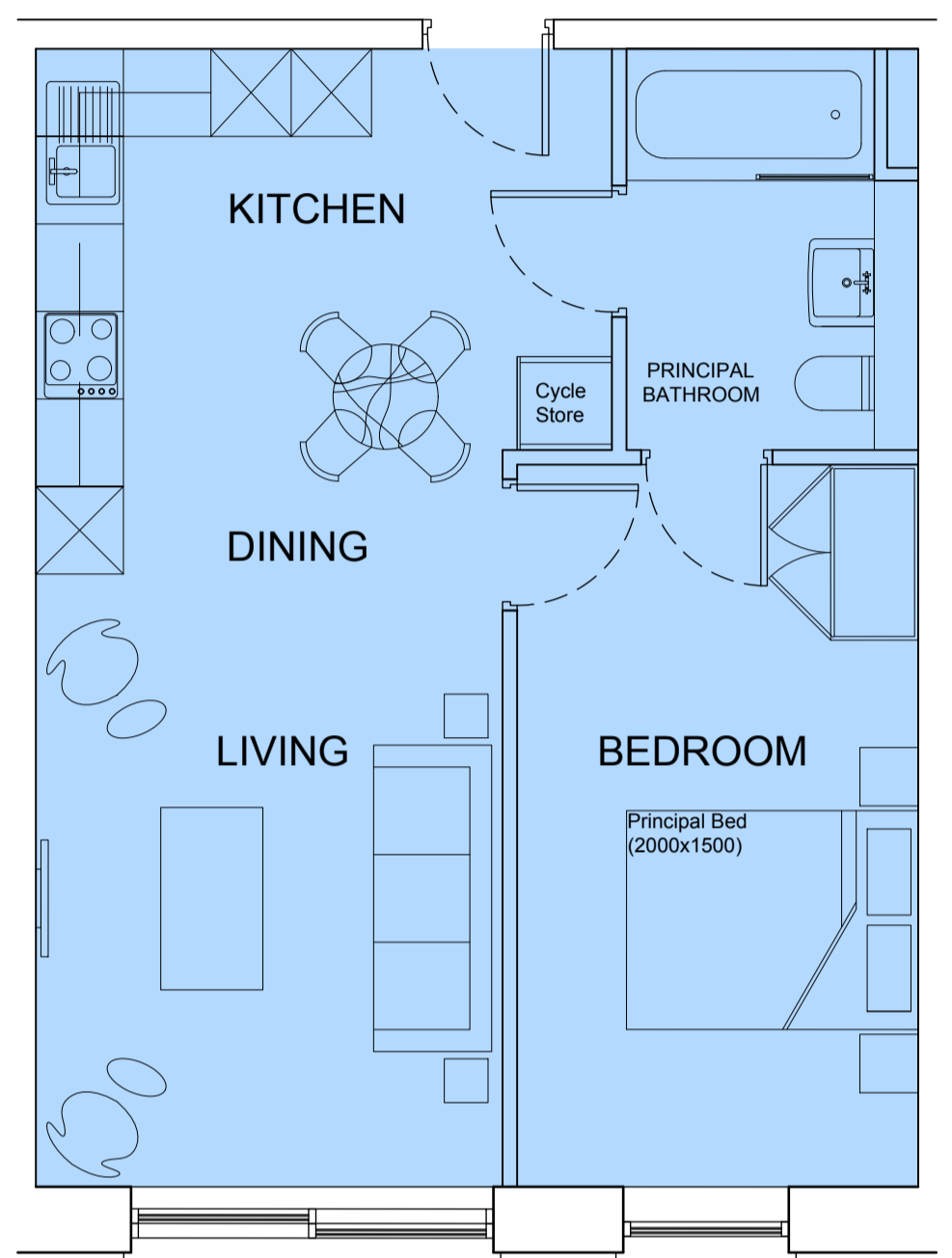


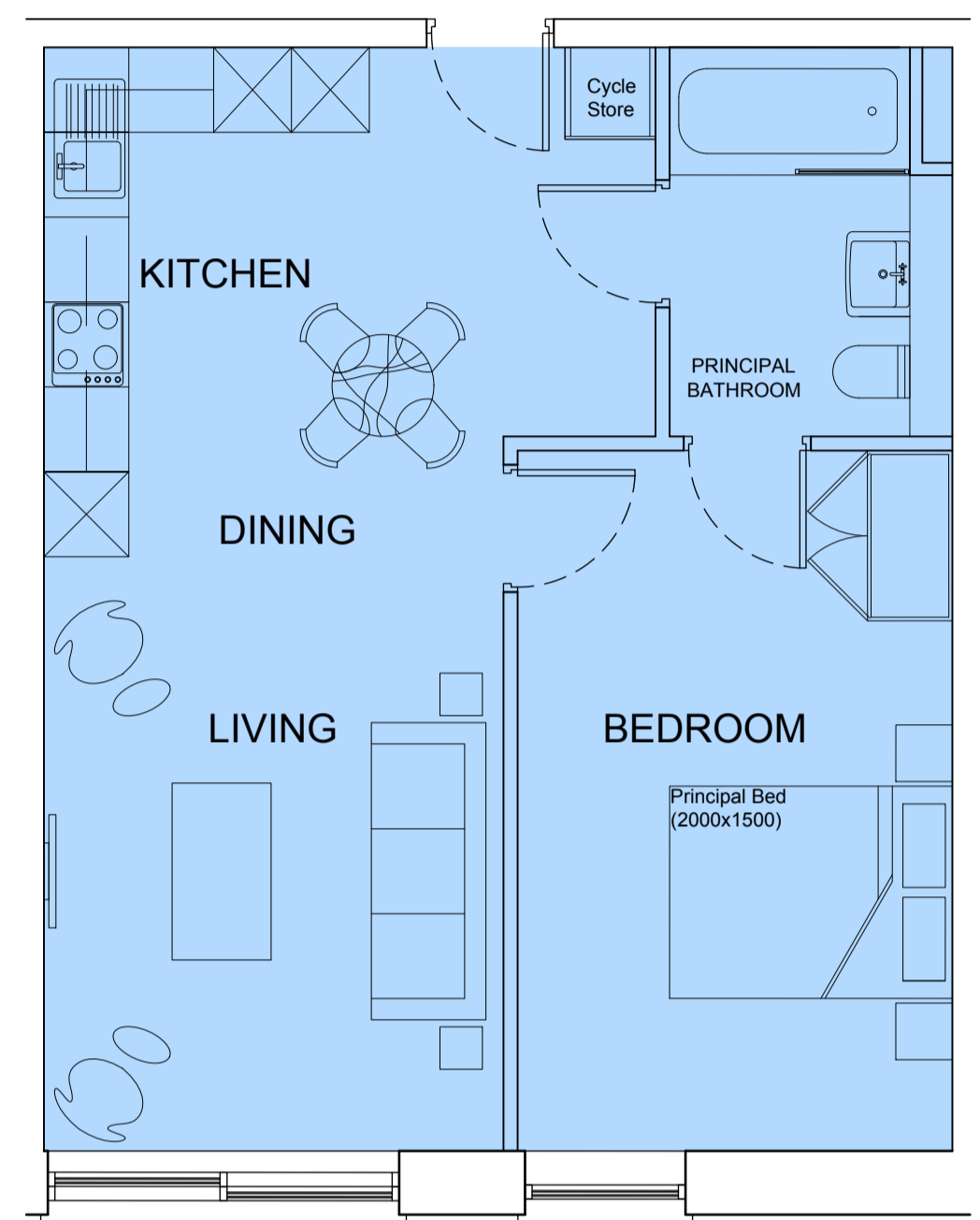
NOTE:  
FOR EXTERNAL SPACES REFER TO GENERAL  
ARRANGEMENT PLANS



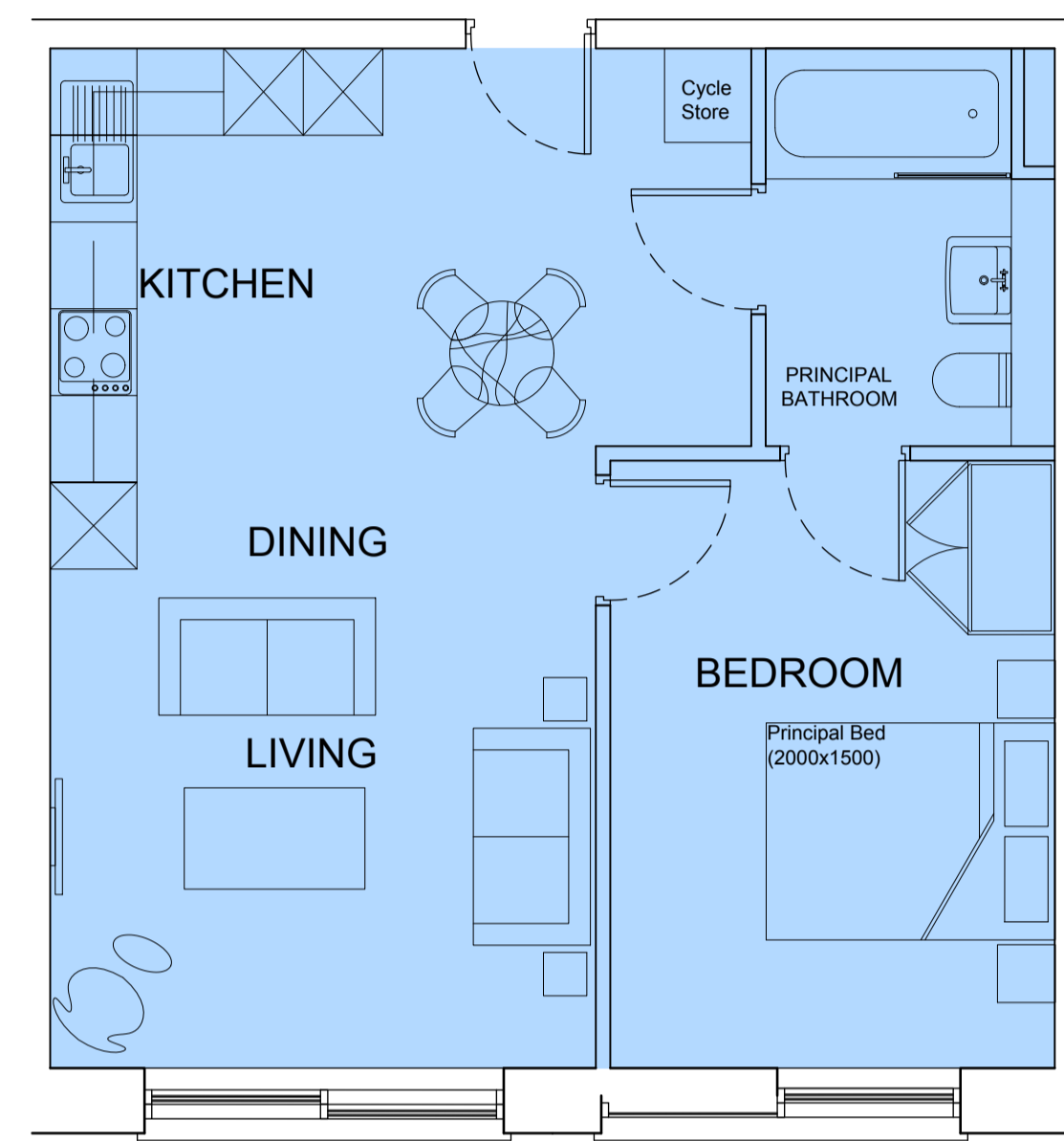
1 BED  
APARTMENT  
(Type 1)



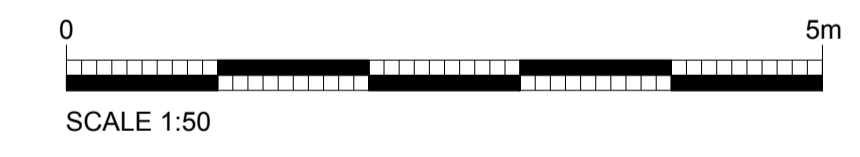
1 BED  
APARTMENT  
(Type 2)



1 BED  
APARTMENT  
(Type 3)



1 BED  
APARTMENT  
(Type 4)



rev	description	drawn	auth	date

© LEACH RHODES WALKER 2001

**LeachRhodesWalker**  
Architects

info@lrw.co.uk | www.lrw.co.uk  
50 Dearmans Place Manchester M3 5LH

Manchester London Bucharest  
+44 (0)161 833 0211 +44 (0)207 993 1363 +40 (21)650 4026

client <b>WOKING FOOTBALL CLUB</b>		
project CARDINAL COURT INC. WOKING FOOTBALL CLUB		
project no <b>7884</b>	drawing no <b>L(00)169</b>	rev <b>D</b>
description <b>UnitTypes 1 Bedroom Apartment</b>		
scale <b>1:50@ A1</b>	date drawn <b>08.10.19</b>	drawn by <b>RB</b>
		authorised by <b>CJG</b>
purpose of issue <input type="radio"/> planning <input type="radio"/> building regs <input type="radio"/> tender <input type="radio"/> comment <input checked="" type="radio"/> approval <input type="radio"/> construction		