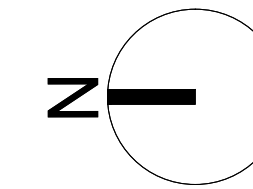


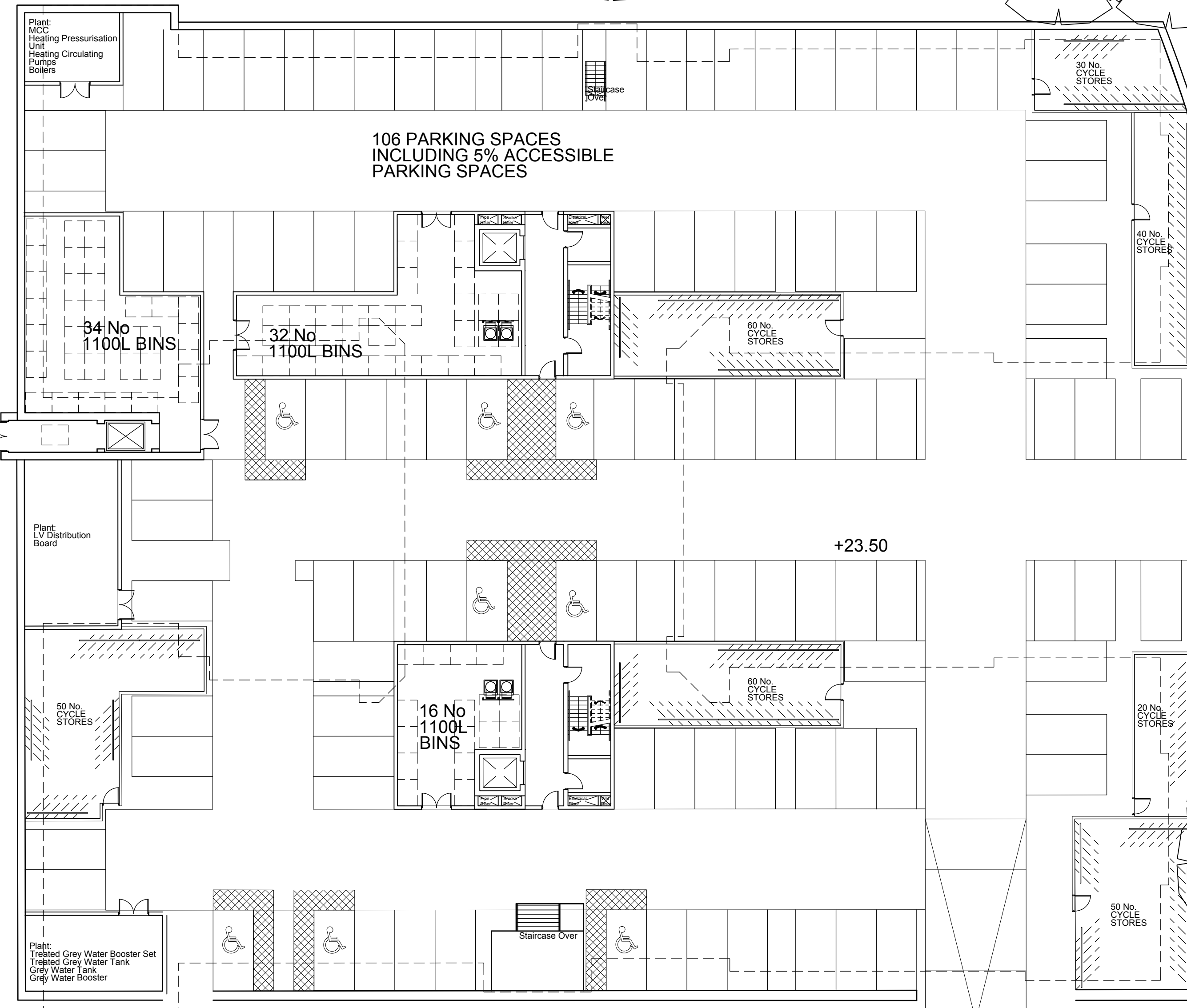
Nut Cottage



### KEY

- STUDIO APARTMENT
- 1 BEDROOM APARTMENT
- 1 BEDROOM DUPLEX / TOWNHOUSE
- 2 BEDROOM APARTMENT
- 2 BEDROOM TOWNHOUSE
- 2 BEDROOM UPPER DUPLEX
- 2 BEDROOM LOWER DUPLEX
- 3 BEDROOM APARTMENT / TOWNHOUSE

8



SCALE @ 1:200

rev	description	drawn	auth	date

LeachRhodesWalker Architects

info@lrw.co.uk | www.lrw.co.uk  
 50 Dearmans Place Manchester M3 5LH

Manchester London Bucharest  
 +44 (0)161 833 0211 +44 (0)207 993 1363 +40 (21)850 4026

client <b>WOKING FOOTBALL CLUB</b>		
project <b>CARDINAL COURT INC. WOKING FOOTBALL CLUB</b>		
project no <b>7884</b>	drawing no <b>L(00)155</b>	rev <b>H</b>
description <b>Block 5 Lower Ground Floor Plan</b>		
scale <b>1:200@ A1</b>	date drawn <b>22.10.19</b>	drawn by <b>DL</b>
purpose of issue planning <input checked="" type="checkbox"/> building regs <input type="checkbox"/> tender <input type="checkbox"/> comment <input type="checkbox"/> approval <input type="checkbox"/> construction <input type="checkbox"/>		authorised by <b>CJG</b>