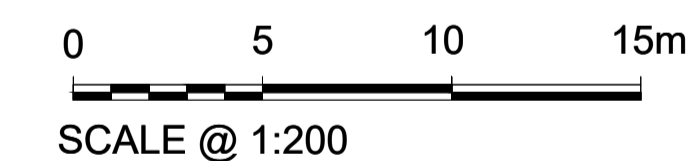
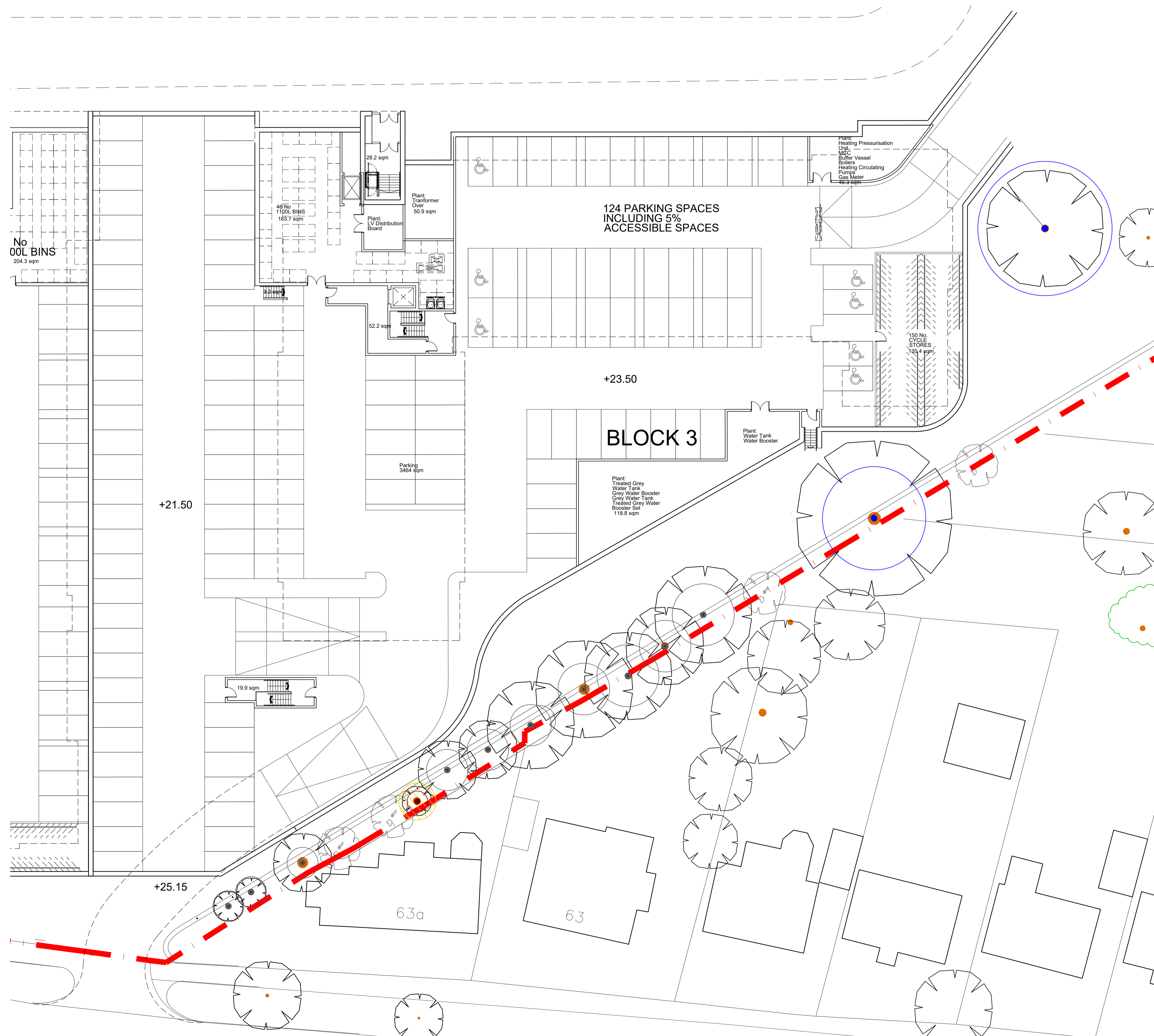
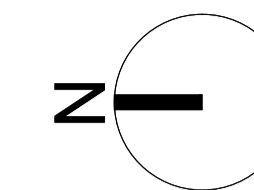


KEY

- STUDIO APARTMENT
- 1 BEDROOM APARTMENT
- 1 BEDROOM DUPLEX / TOWNHOUSE
- 2 BEDROOM APARTMENT
- 2 BEDROOM TOWNHOUSE
- 2 BEDROOM UPPER DUPLEX
- 2 BEDROOM LOWER DUPLEX
- 3 BEDROOM APARTMENT / TOWNHOUSE



rev	description	drawn	auth	date

LeachRhodesWalker
Architects

info@lrw.co.uk | www.lrw.co.uk
50 Deansgate Place Manchester M3 5LH

Manchester London Bucharest
+44 (0)161 833 0211 +44 (0)207 953 1363 +40 (0)1650 4026

client WOKING FOOTBALL CLUB		
project CARDINAL COURT INC. WOKING FOOTBALL CLUB		
project no 7884	drawing no L(00)134	rev H
description Block 3 Lower Ground Floor Floor Plan		
scale 1:200@ A1	date drawn 22.10.19	drawn by KHW
		authorised by CJG
purpose of issue planning ● building regs ○ tender ○ comment ○ approval ○ construction ○		