



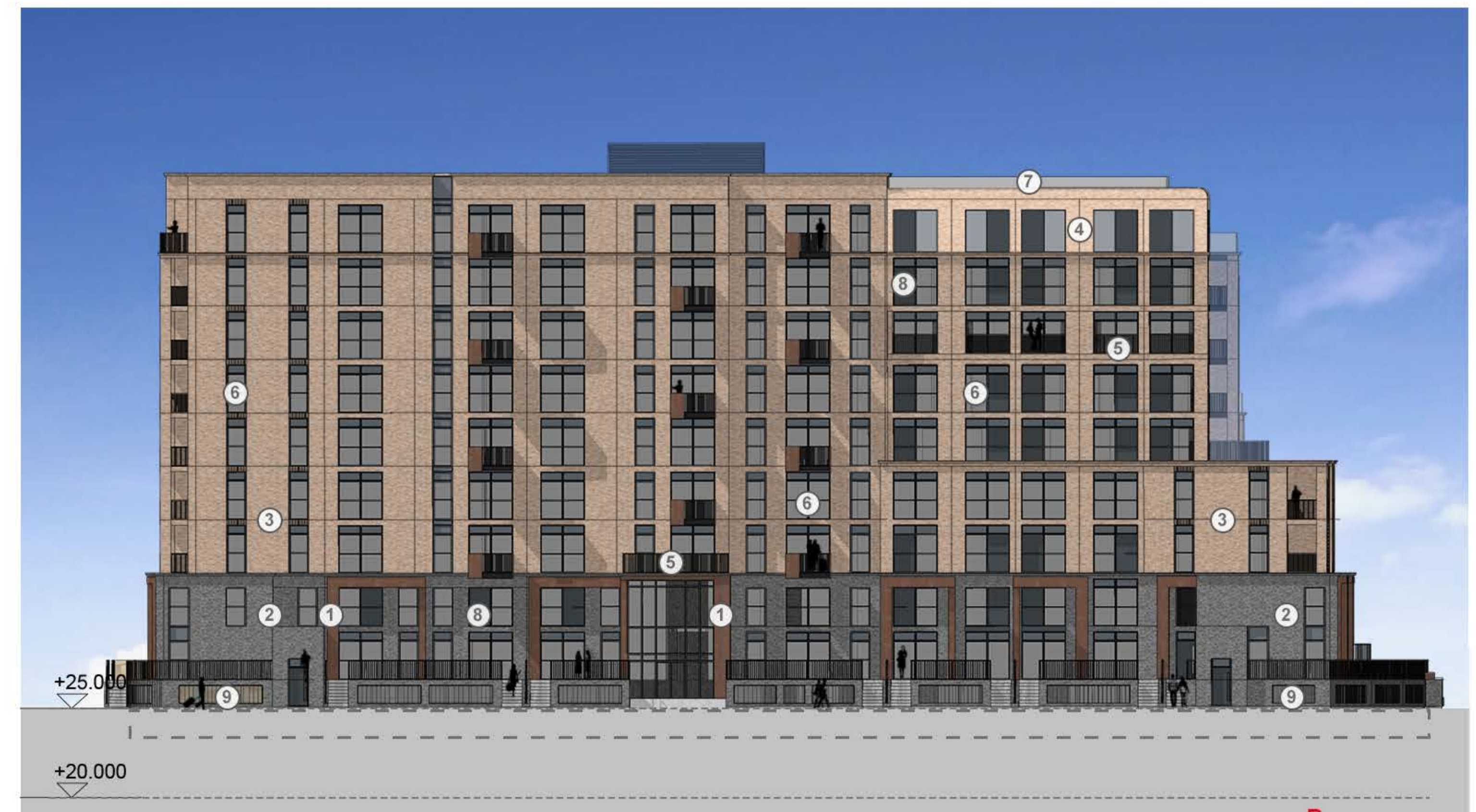
ELEVATION A - FACING SOUTH/PLAYING FIELDS



ELEVATION B - FACING EAST



ELEVATION C - FACING NORTH/NEW STREET



ELEVATION D - FACING WEST/BLOCK 4

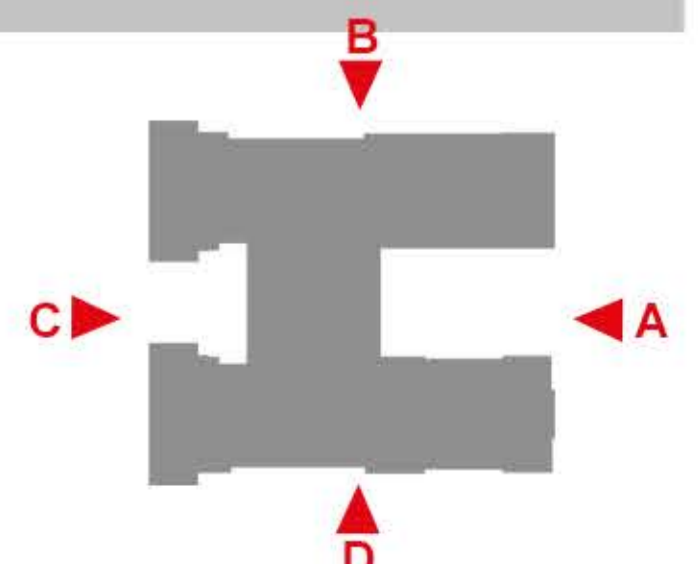
0 5 10 15m
SCALE @ 1:200

LeachRhodesWalker
Architects



Ground Floor West: 50 Dearmans Place Manchester, M3 5LH. T: 0161 833 0211. E: info@lrw.co.uk www.lrw.co.uk

- | | | |
|---------------------------------|--|--|
| ① Metal Panel | ⑤ Vertical Metal Balustrade [Black / Dark Grey] | ⑧ Opaque Glazed Insulated Cladding Panel |
| ② Brickwork Type 1 [Grey] | ⑥ Powder Coated Window Frame [Black / Dark Grey] | ⑨ Car Park Grilles [Dark Grey] |
| ③ Brickwork Type 2 [Buff] | ⑦ Glass Balustrade | |
| ④ Brickwork Type 3 [Light Buff] | | |



7884 CARDINAL COURT INC. WOKING FOOTBALL CLUB : BLOCK 5 ELEVATIONS

Scale: 1:200@A1 Auth By: CJG Drawn By: AT Date: 04.12.19 Dwg No: 7884-L(00)243E