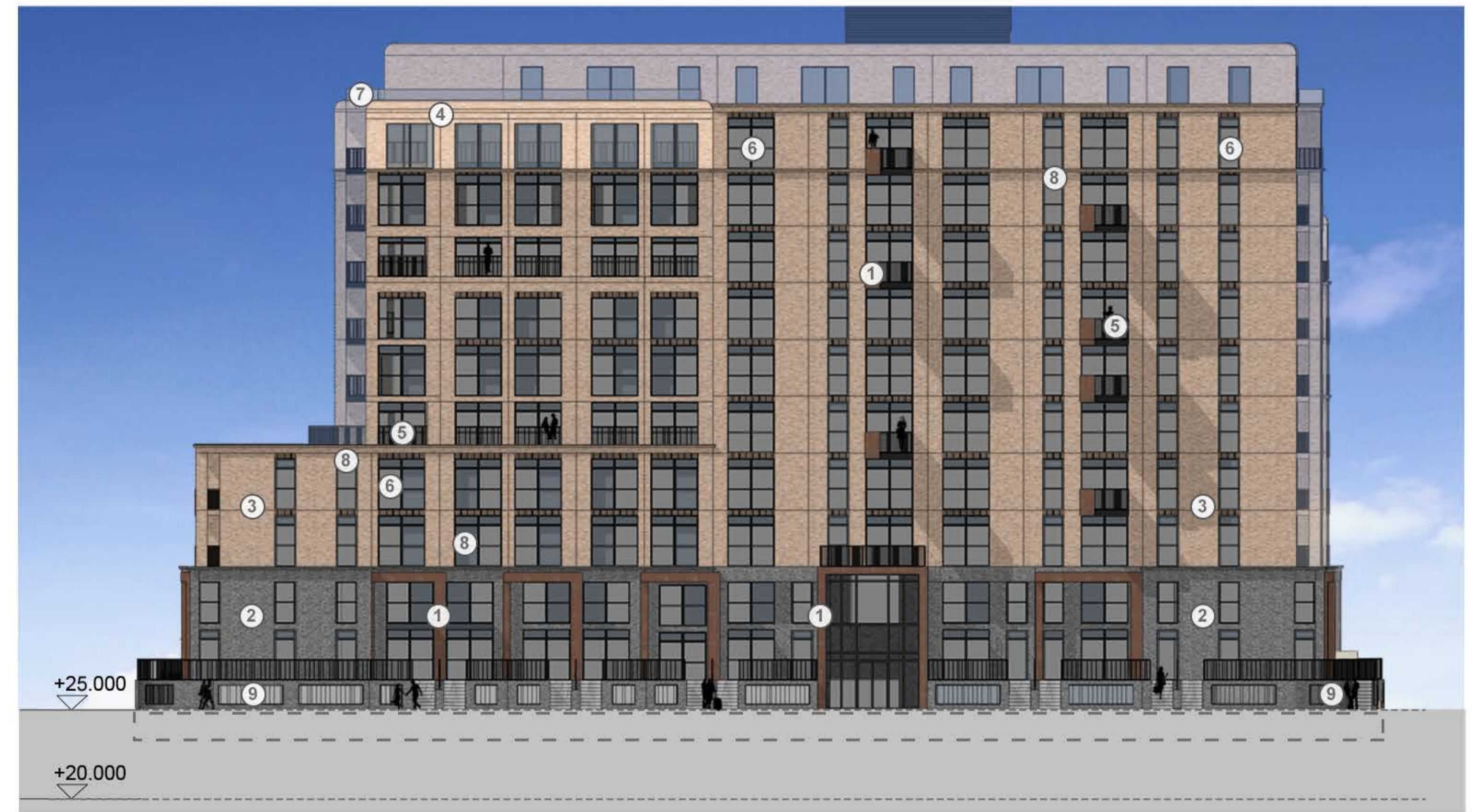
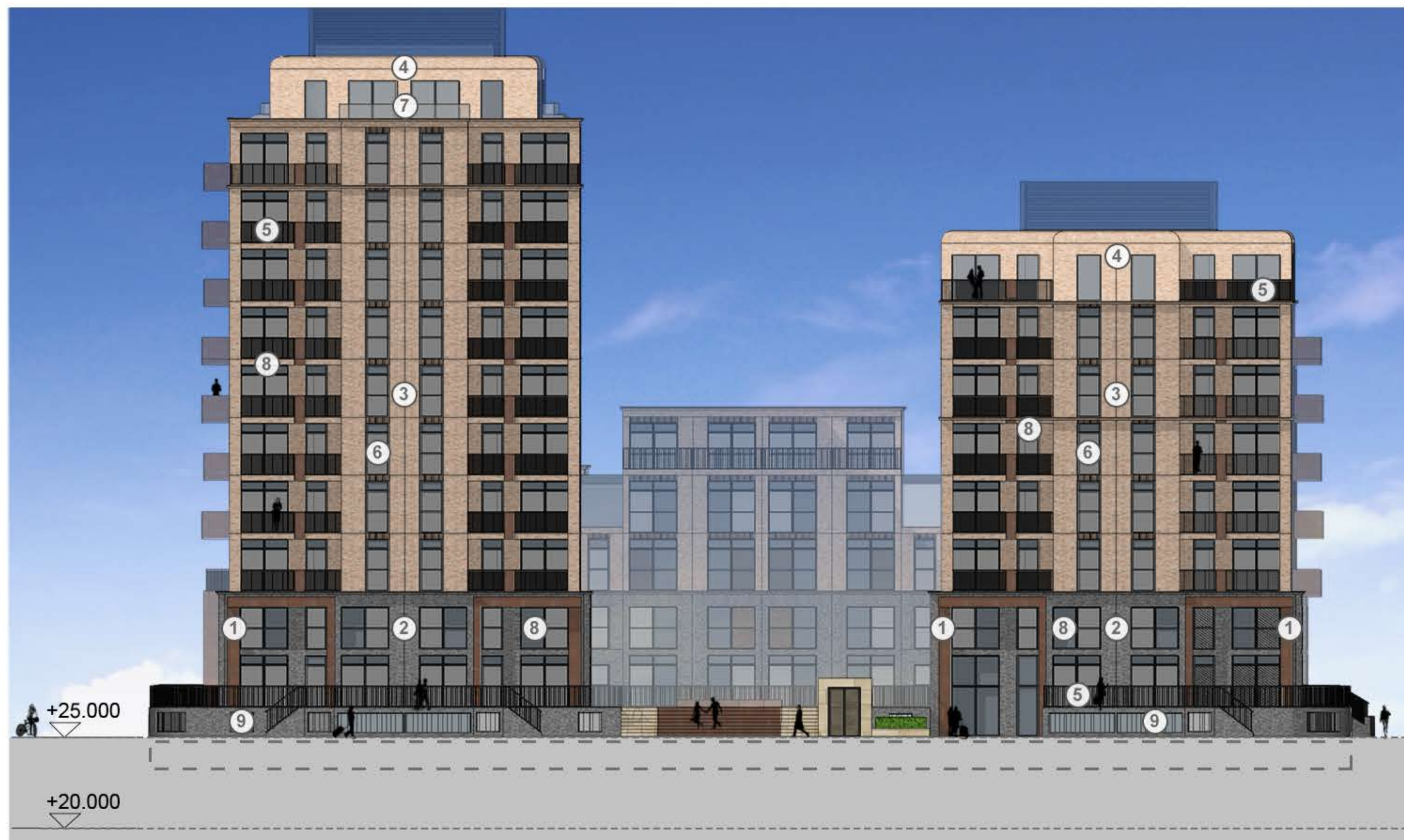




ELEVATION A - FACING SOUTH/PLAYING FIELDS



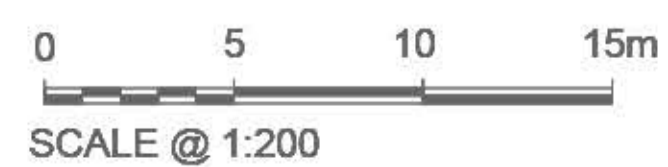
ELEVATION B - FACING BLOCK 5/EAST



ELEVATION C - FACING NORTH/NEW STREET



ELEVATION D - FACING WEST



- | | | |
|---------------------------------|--|--|
| ① Metal Panel | ⑤ Vertical Metal Balustrade [Black / Dark Grey] | ⑧ Opaque Glazed Insulated Cladding Panel |
| ② Brickwork Type 1 [Grey] | ⑥ Powder Coated Window Frame [Black / Dark Grey] | ⑨ Car Park Grilles [Dark Grey] |
| ③ Brickwork Type 2 [Buff] | ⑦ Glass Balustrade | |
| ④ Brickwork Type 3 [Light Buff] | | |

