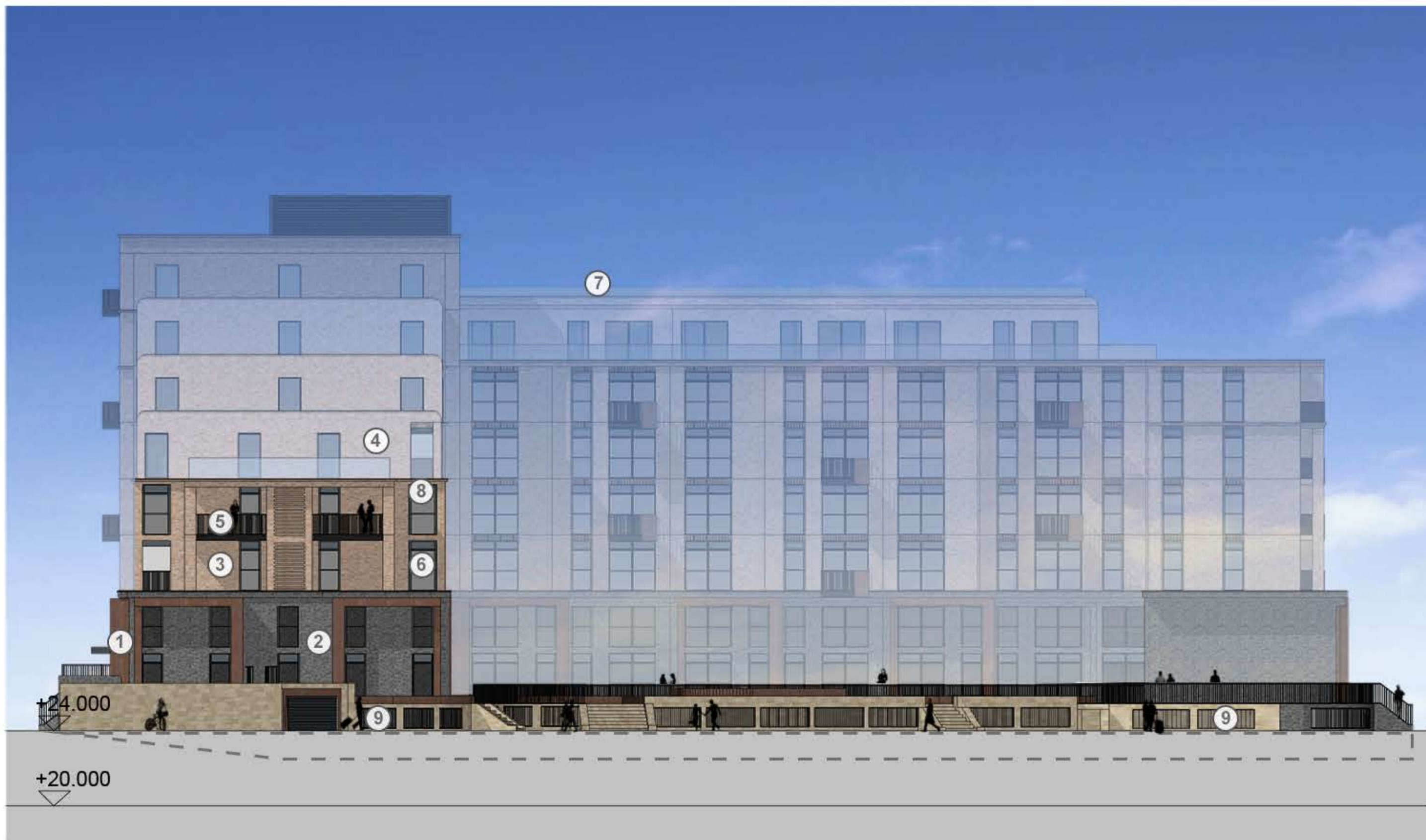




ELEVATION A - FACING EAST/NEW STREET



ELEVATION B - FACING NORTH/NEW CONNECTION TO WESTFIELD AVENUE



ELEVATION C - FACING WEST

0 5 10 15m
SCALE @ 1:200



ELEVATION D - FACING SOUTH

- | | | |
|---------------------------------|--|--|
| ① Metal Panel | ⑤ Vertical Metal Balustrade [Black / Dark Grey] | ⑧ Opaque Glazed Insulated Cladding Panel |
| ② Brickwork Type 1 [Grey] | ⑥ Powder Coated Window Frame [Black / Dark Grey] | ⑨ Car Park Grilles [Dark Grey] |
| ③ Brickwork Type 2 [Buff] | ⑦ Glass Balustrade | |
| ④ Brickwork Type 3 [Light Buff] | | |

