



Lighting Strategy

Appendix A

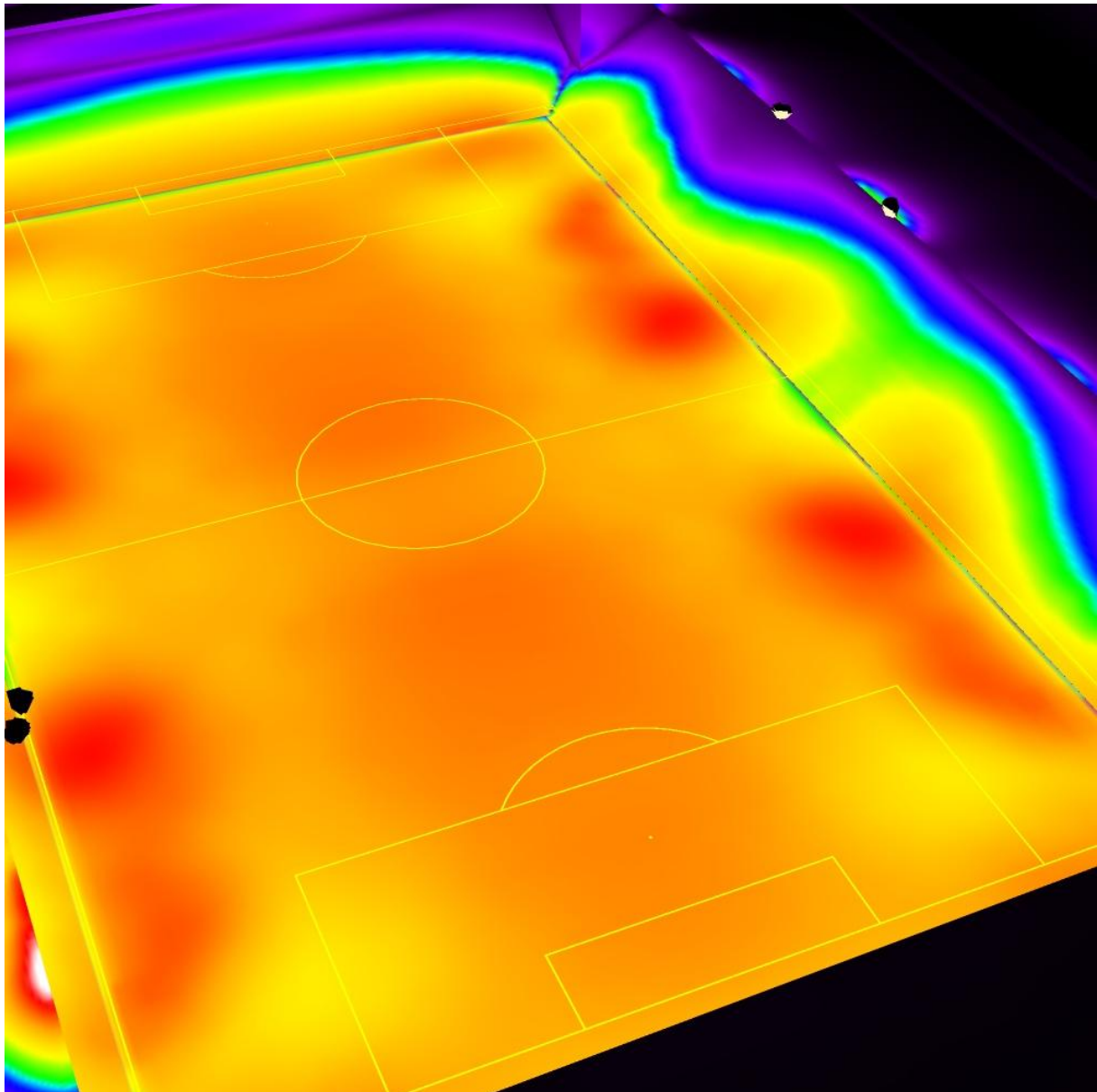
Woking Football Club – Pitch Illumination

30th September 2019



Operator
Telephone
Fax
e-Mail

Exterior Scene 1 / False Colour Rendering

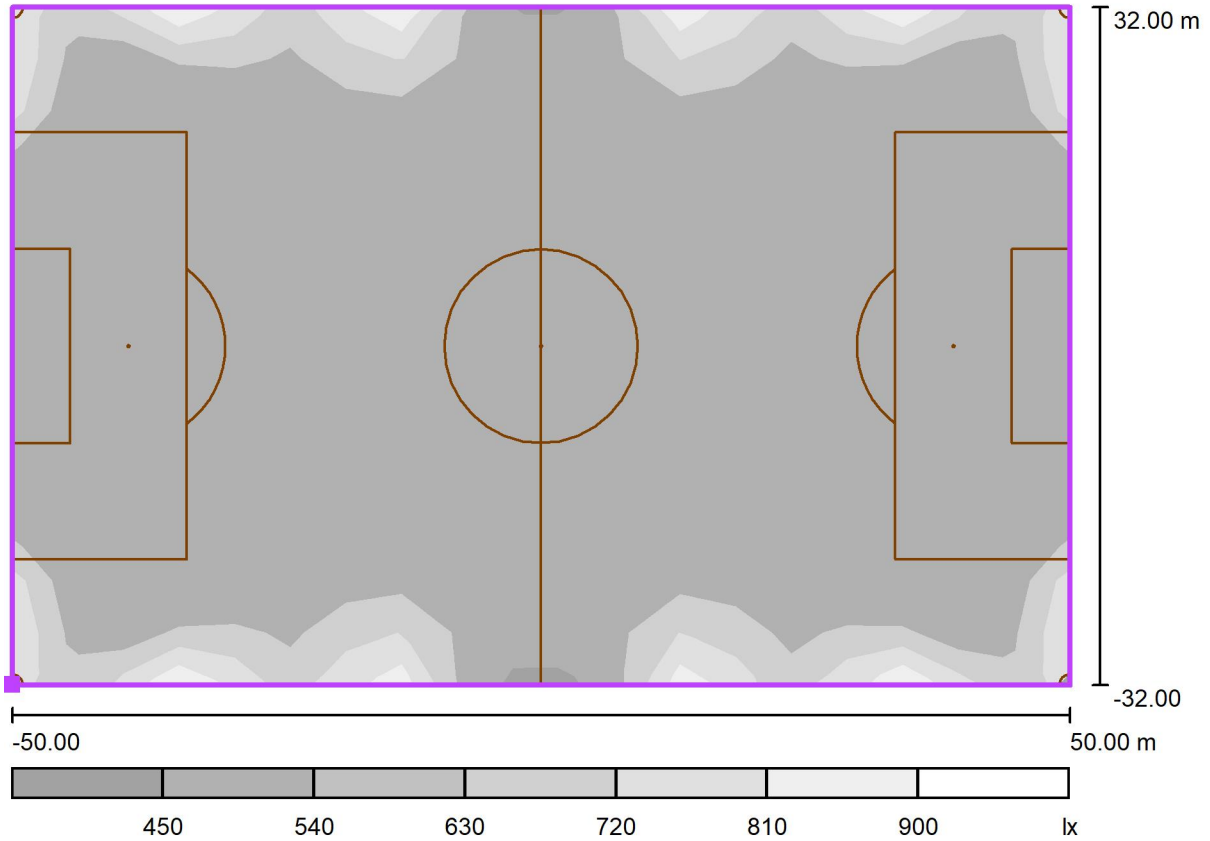


0 100 150 180 200 300 500 800 1000 lx



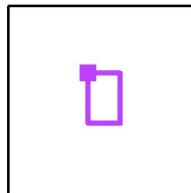
Operator
Telephone
Fax
e-Mail

Exterior Scene 1 / Soccer Field 2 Calculation Grid (PA) / Greyscale (E, Horizontal)



Scale 1 : 715

Position of surface in external scene:
Marked point: (-238.625 m,
162.655 m, 1.877 m)



Grid: 19 x 13 Points

E_{av} [lx]
565

E_{min} [lx]
398

E_{max} [lx]
845

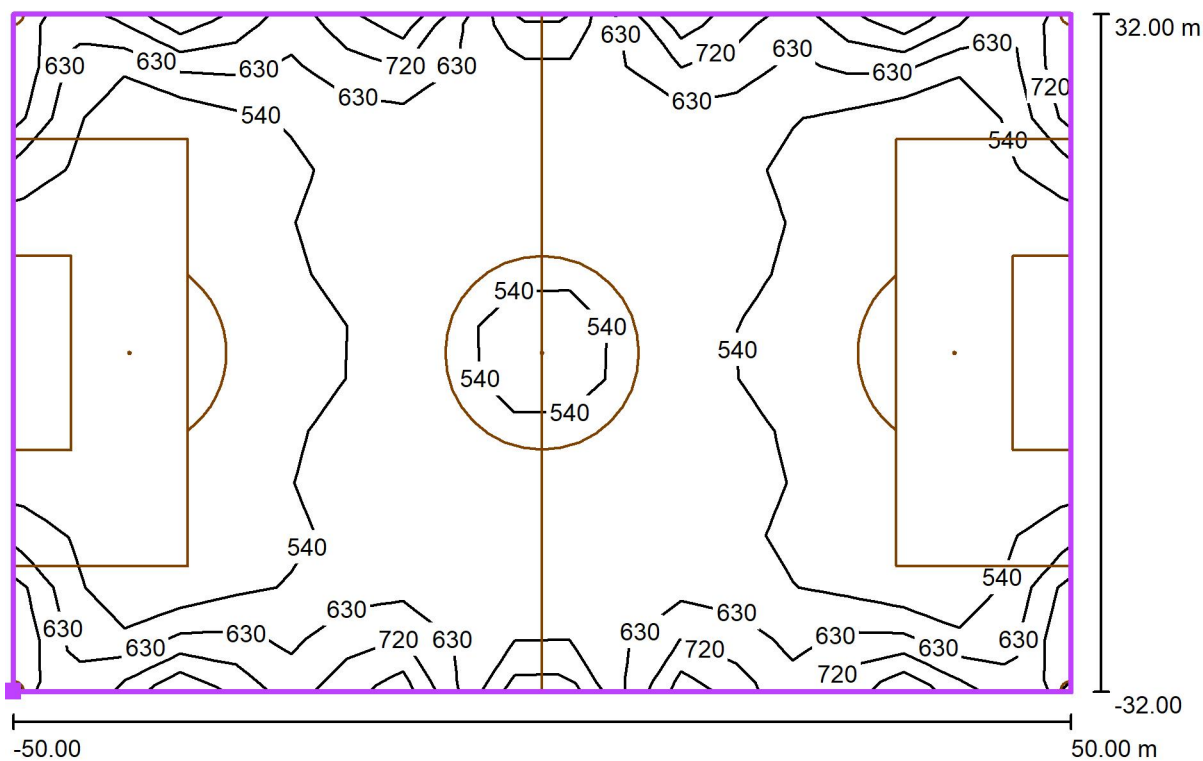
u_0
0.70

E_{min} / E_{max}
0.47



Operator
 Telephone
 Fax
 e-Mail

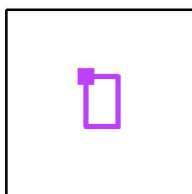
Exterior Scene 1 / Soccer Field 2 Calculation Grid (PA) / Isolines (E, Horizontal)



Values in Lux, Scale 1 : 715

Position of surface in external scene:

Marked point: (-238.625 m,
 162.655 m, 1.877 m)



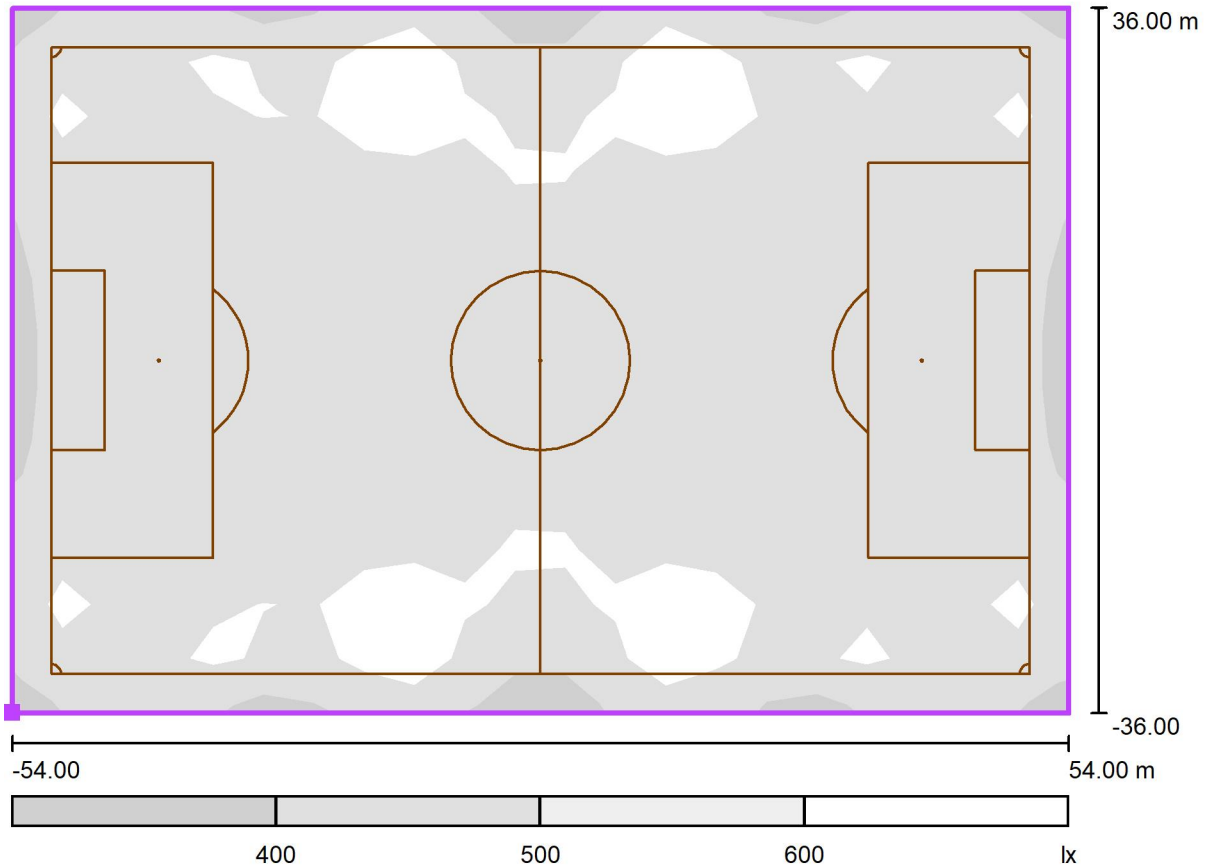
Grid: 19 x 13 Points

E_{av} [lx]	E_{min} [lx]	E_{max} [lx]	u0	E_{min} / E_{max}
565	398	845	0.70	0.47



Operator
Telephone
Fax
e-Mail

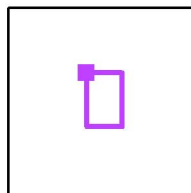
Exterior Scene 1 / Soccer Field 2 Calculation Grid (TA) / Greyscale (E, Horizontal)



Scale 1 : 773

Position of surface in external scene:

Marked point: (-242.625 m,
166.655 m, 1.877 m)



Grid: 21 x 13 Points

E_{av} [lx]
545

E_{min} [lx]
325

E_{max} [lx]
823

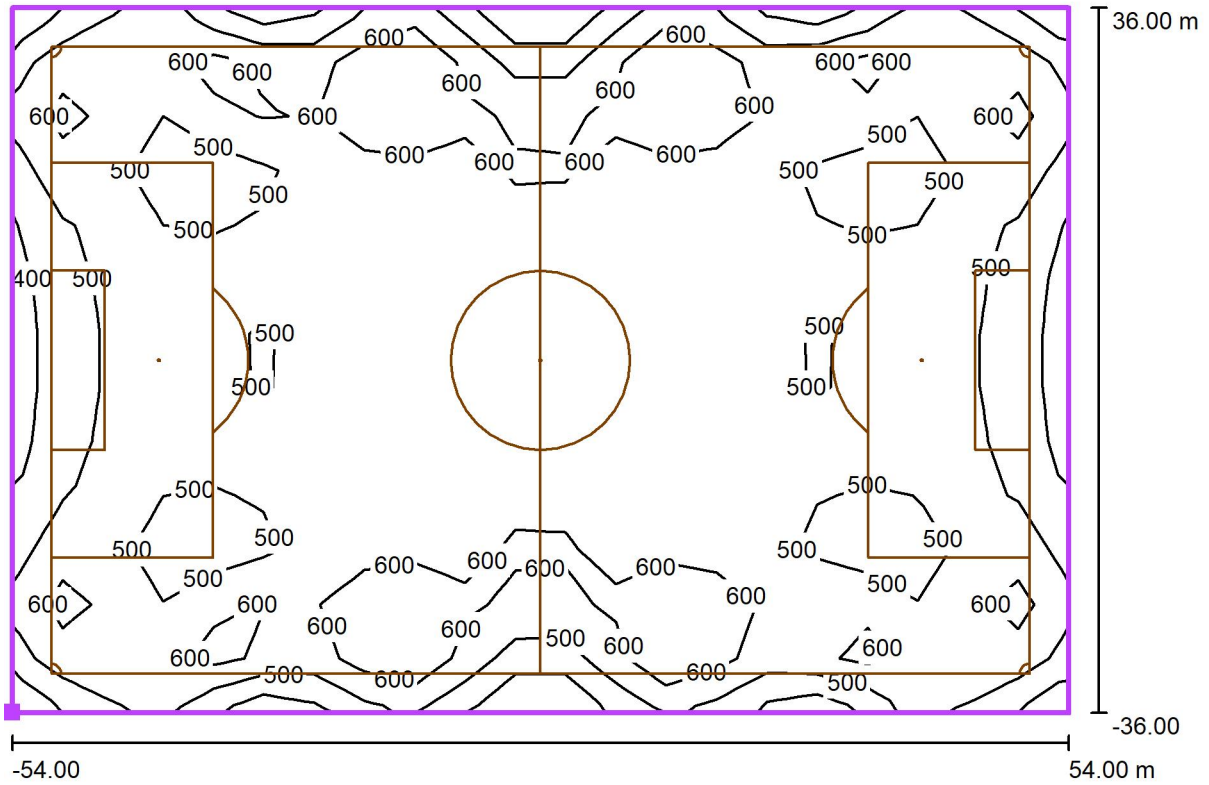
u0
0.60

E_{min} / E_{max}
0.39



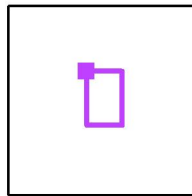
Operator
Telephone
Fax
e-Mail

Exterior Scene 1 / Soccer Field 2 Calculation Grid (TA) / Isolines (E, Horizontal)



Values in Lux, Scale 1 : 773

Position of surface in external scene:
Marked point: (-242.625 m,
166.655 m, 1.877 m)



Grid: 21 x 13 Points

E_{av} [lx]
545

E_{min} [lx]
325

E_{max} [lx]
823

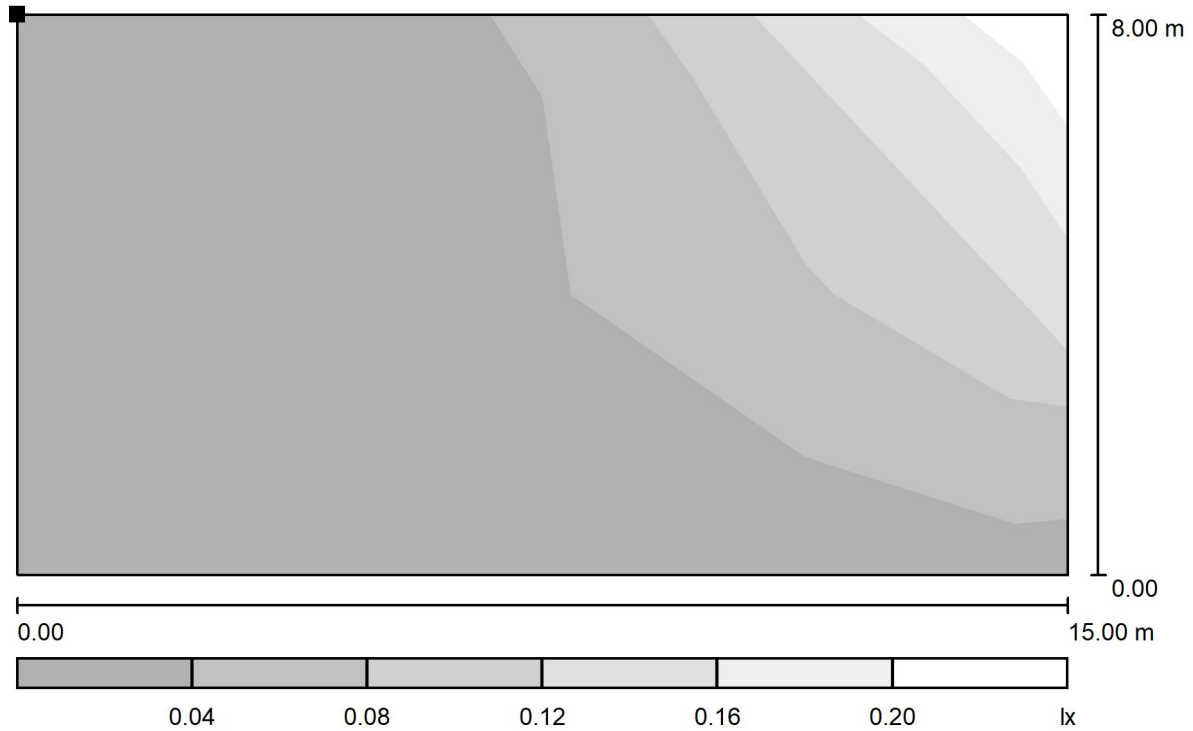
u_0
0.60

E_{min} / E_{max}
0.39



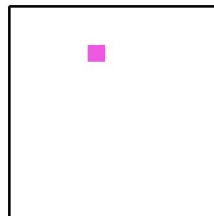
Operator
Telephone
Fax
e-Mail

Exterior Scene 1 / Elm View / Greyscale (E, Perpendicular)



Scale 1 : 108

Position of surface in external scene:
Marked point:
(-243.004 m, 213.049 m, 8.151 m)



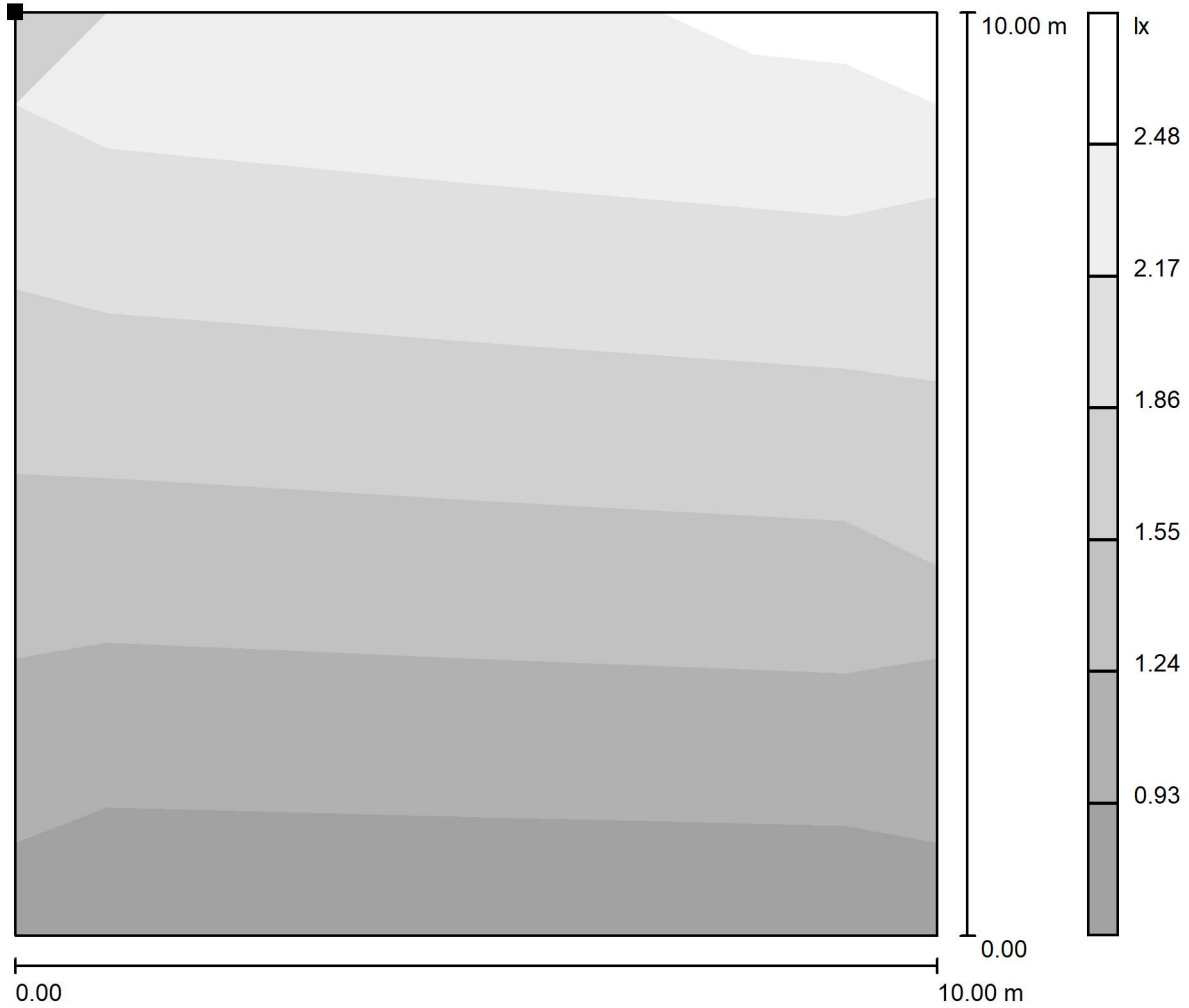
Grid: 4 x 2 Points

E_{av} [lx]	E_{min} [lx]	E_{max} [lx]	u0	E_{min} / E_{max}
0.05	0.03	0.21	0.540	0.128



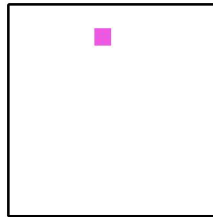
Operator
Telephone
Fax
e-Mail

Exterior Scene 1 / The Dell / Greyscale (E, Perpendicular)



Scale 1 : 82

Position of surface in external scene:
Marked point:
(-229.179 m, 238.838 m, 10.020 m)



Grid: 2 x 2 Points

E_{av} [lx]
1.60

E_{min} [lx]
0.88

E_{max} [lx]
2.41

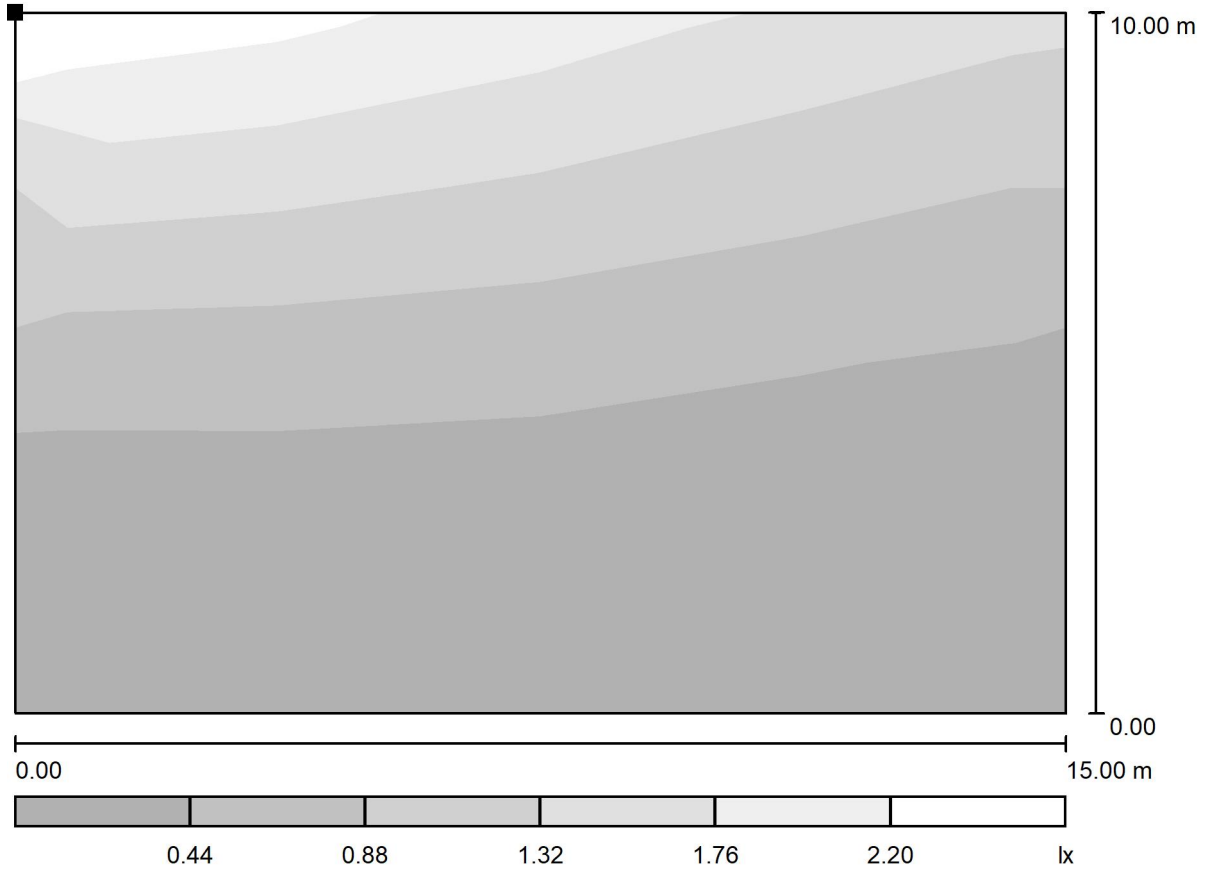
u_0
0.549

E_{min} / E_{max}
0.364



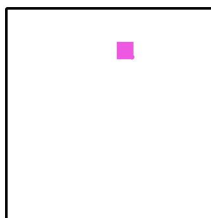
Operator
 Telephone
 Fax
 e-Mail

Exterior Scene 1 / Cotswolds / Greyscale (E, Perpendicular)



Scale 1 : 108

Position of surface in external scene:
 Marked point:
 (-185.379 m, 221.297 m, 10.302 m)



Grid: 4 x 4 Points

E_{av} [lx]
 0.70

E_{min} [lx]
 0.09

E_{max} [lx]
 2.28

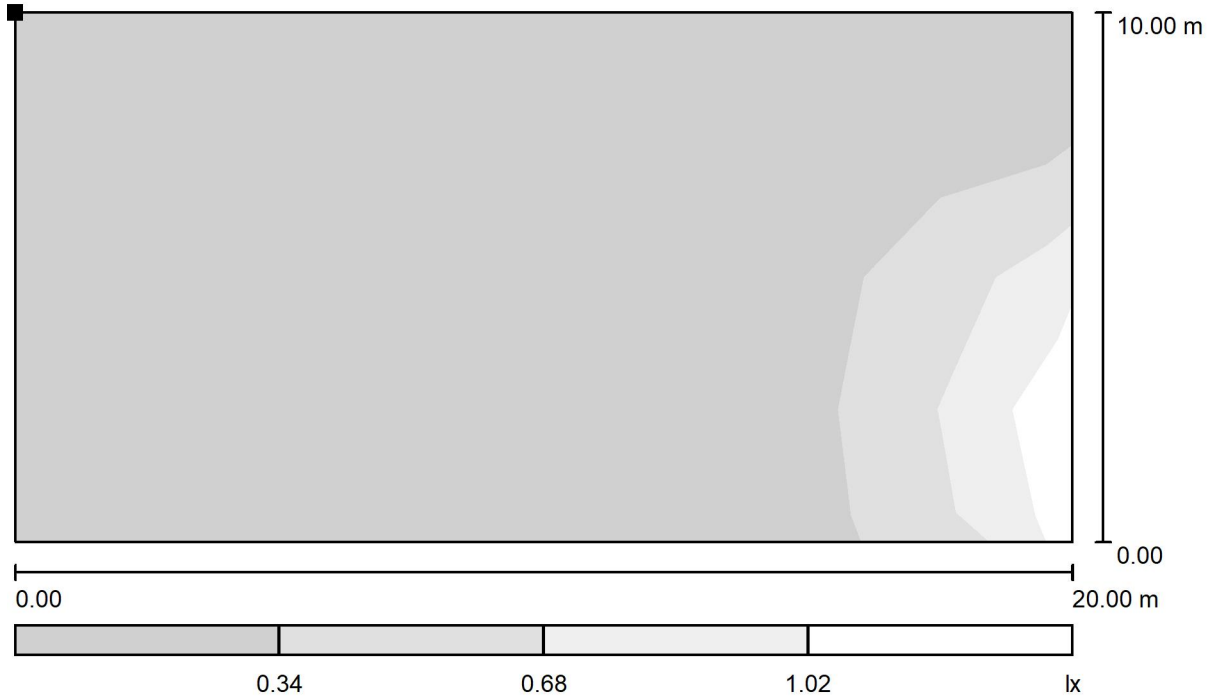
u_0
 0.126

E_{min} / E_{max}
 0.039



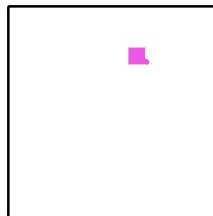
Operator
Telephone
Fax
e-Mail

Exterior Scene 1 / Chinthurst / Greyscale (E, Perpendicular)



Scale 1 : 143

Position of surface in external scene:
Marked point:
(-168.452 m, 207.935 m, 9.808 m)



Grid: 8 x 4 Points

E_{av} [lx]
0.16

E_{min} [lx]
0.05

E_{max} [lx]
1.73

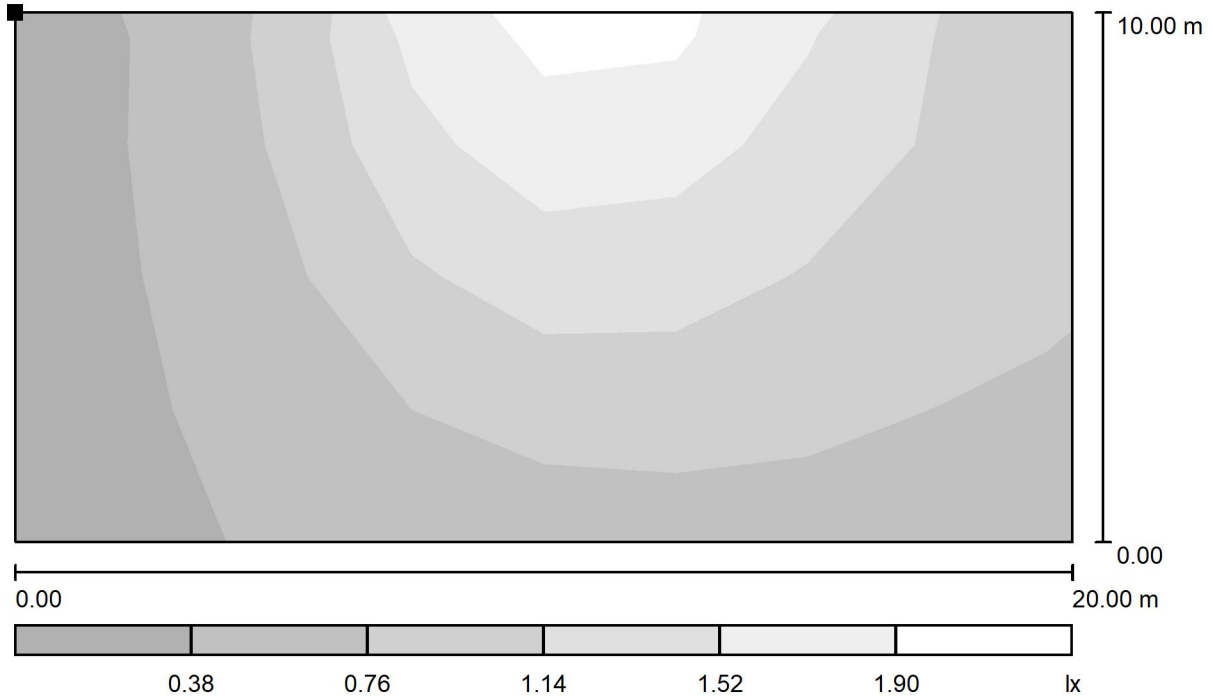
u0
0.321

E_{min} / E_{max}
0.029



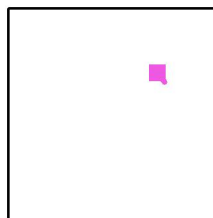
Operator
Telephone
Fax
e-Mail

Exterior Scene 1 / 9-12 / Greyscale (E, Perpendicular)



Scale 1 : 143

Position of surface in external scene:
Marked point:
(-131.178 m, 181.297 m, 10.302 m)



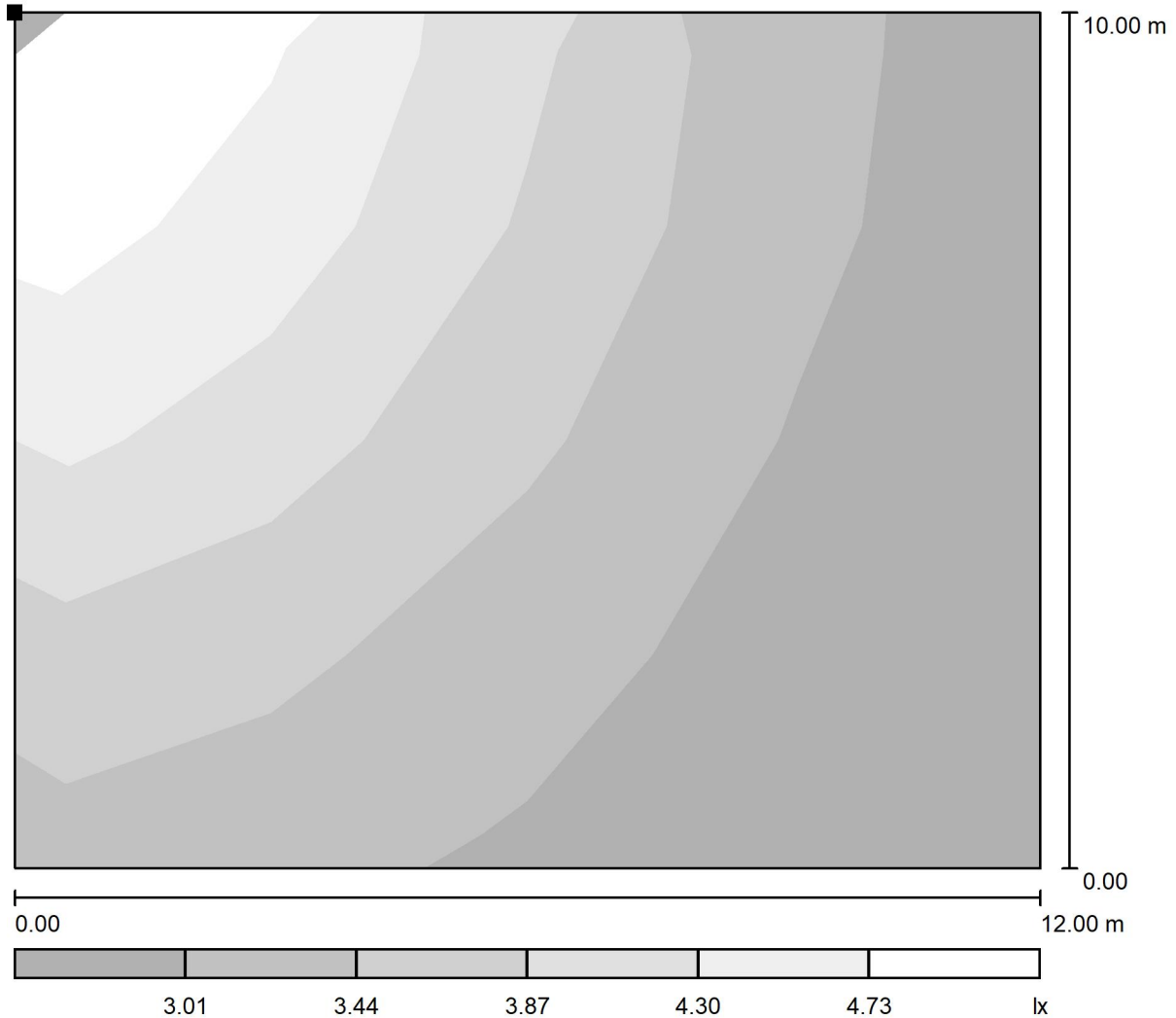
Grid: 8 x 4 Points

E_{av} [lx]	E_{min} [lx]	E_{max} [lx]	u0	E_{min} / E_{max}
0.95	0.30	2.21	0.312	0.133



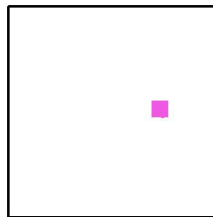
Operator
Telephone
Fax
e-Mail

Exterior Scene 1 / Pond House / Greyscale (E, Perpendicular)



Scale 1 : 86

Position of surface in external scene:
Marked point:
(-126.233 m, 111.658 m, 10.302 m)



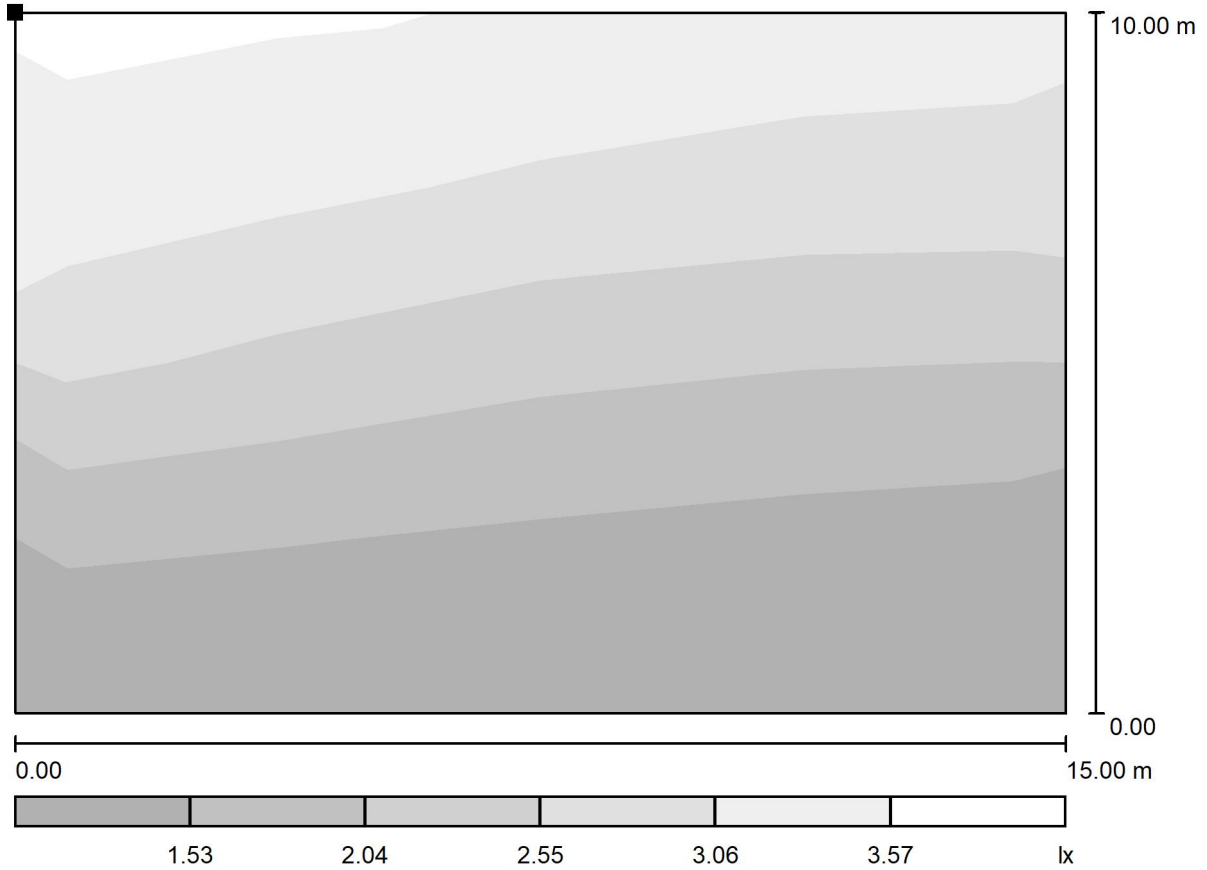
Grid: 4 x 4 Points

E_{av} [lx]	E_{min} [lx]	E_{max} [lx]	u0	E_{min} / E_{max}
3.51	2.70	4.86	0.769	0.555



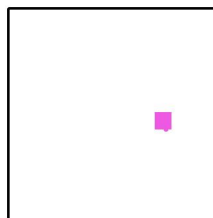
Operator
Telephone
Fax
e-Mail

Exterior Scene 1 / Kingfield Cottage / Greyscale (E, Perpendicular)



Scale 1 : 108

Position of surface in external scene:
Marked point:
(-120.568 m, 95.185 m, 10.302 m)



Grid: 4 x 4 Points

E_{av} [lx]
2.24

E_{min} [lx]
1.15

E_{max} [lx]
3.68

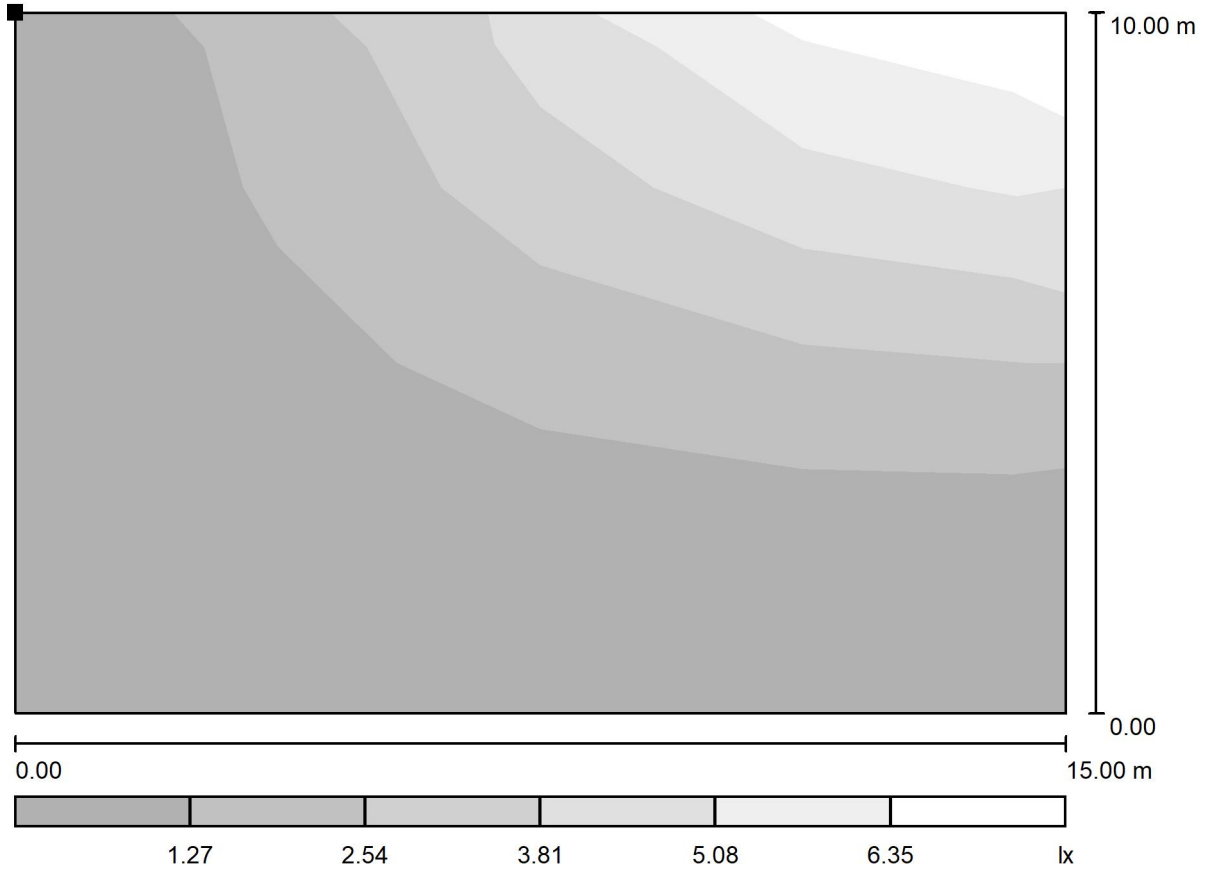
u_0
0.512

E_{min} / E_{max}
0.311



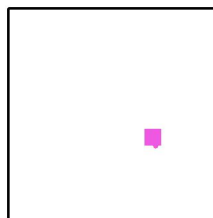
Operator
Telephone
Fax
e-Mail

Exterior Scene 1 / The Cedars / Greyscale (E, Perpendicular)



Scale 1 : 108

Position of surface in external scene:
Marked point:
(-139.123 m, 65.347 m, 10.302 m)



Grid: 4 x 4 Points

E_{av} [lx]
1.76

E_{min} [lx]
0.19

E_{max} [lx]
6.53

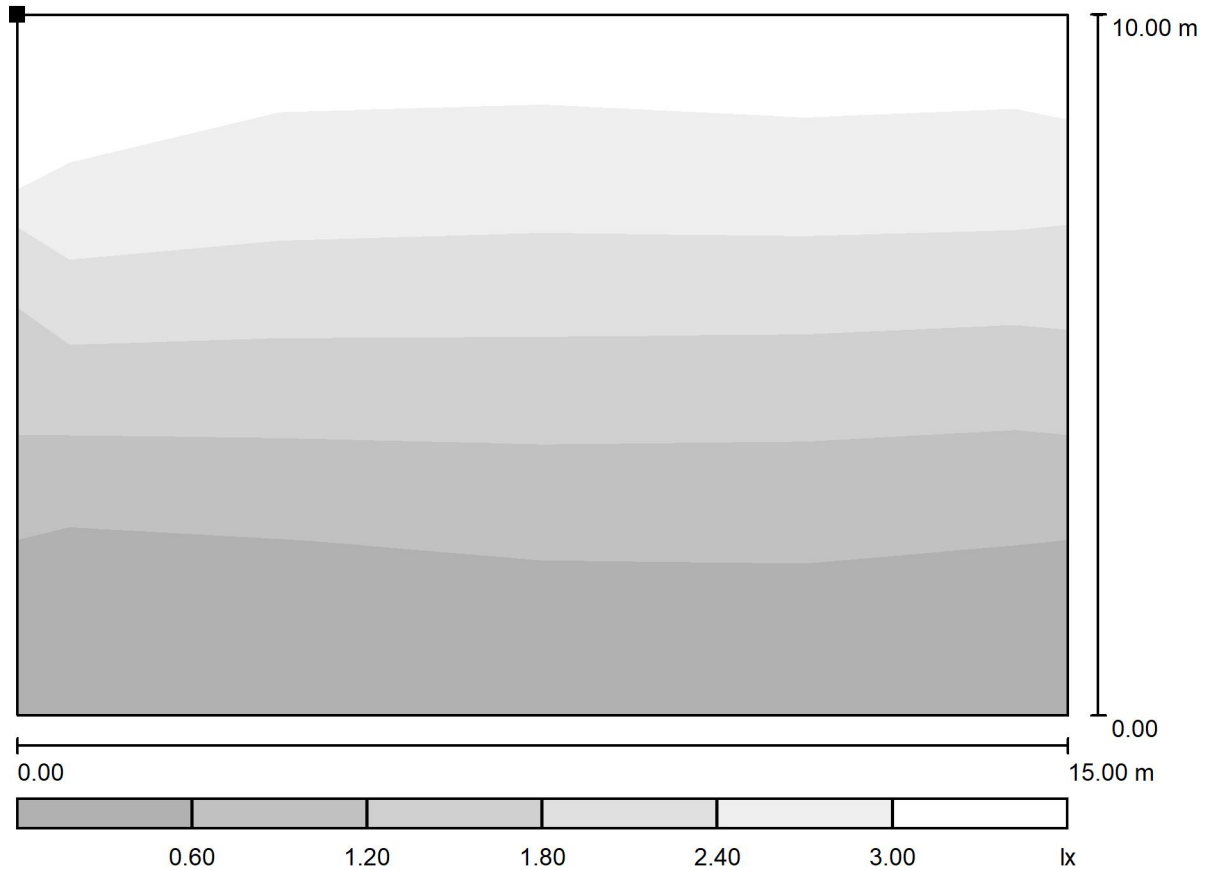
u_0
0.108

E_{min} / E_{max}
0.029



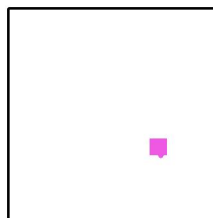
Operator
 Telephone
 Fax
 e-Mail

Exterior Scene 1 / Nut Cottage / Greyscale (E, Perpendicular)



Scale 1 : 108

Position of surface in external scene:
 Marked point:
 (-129.283 m, 47.969 m, 10.302 m)



Grid: 4 x 4 Points

E_{av} [lx]
 1.67

E_{min} [lx]
 0.30

E_{max} [lx]
 3.31

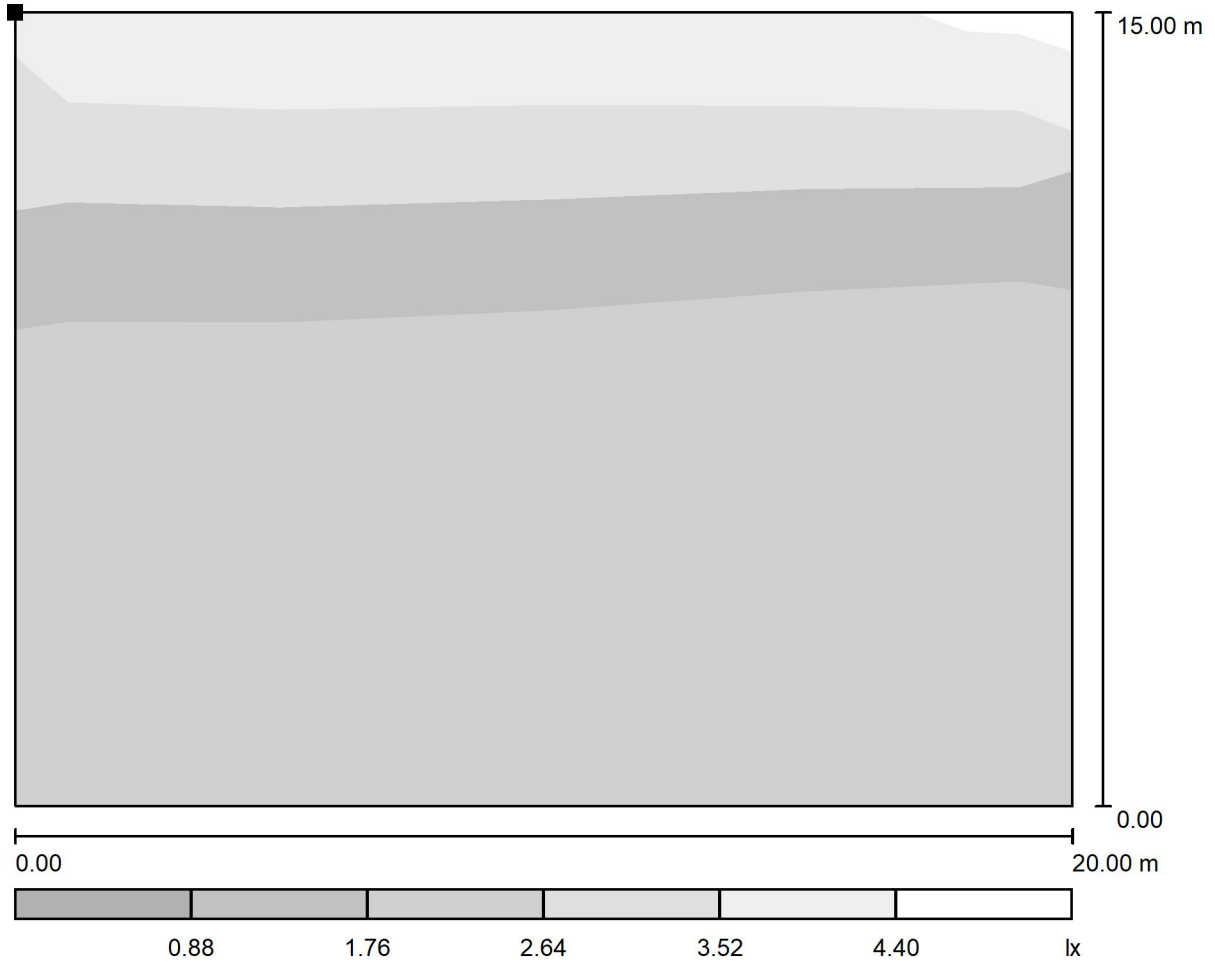
u_0
 0.179

E_{min} / E_{max}
 0.090



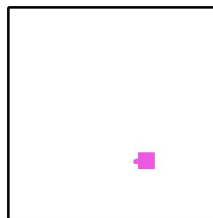
Operator
Telephone
Fax
e-Mail

Exterior Scene 1 / Block 5 1 / Greyscale (E, Perpendicular)



Scale 1 : 143

Position of surface in external scene:
Marked point:
(-150.520 m, 21.346 m, 16.156 m)



Grid: 4 x 4 Points

E_{av} [lx]
1.38

E_{min} [lx]
0.10

E_{max} [lx]
4.52

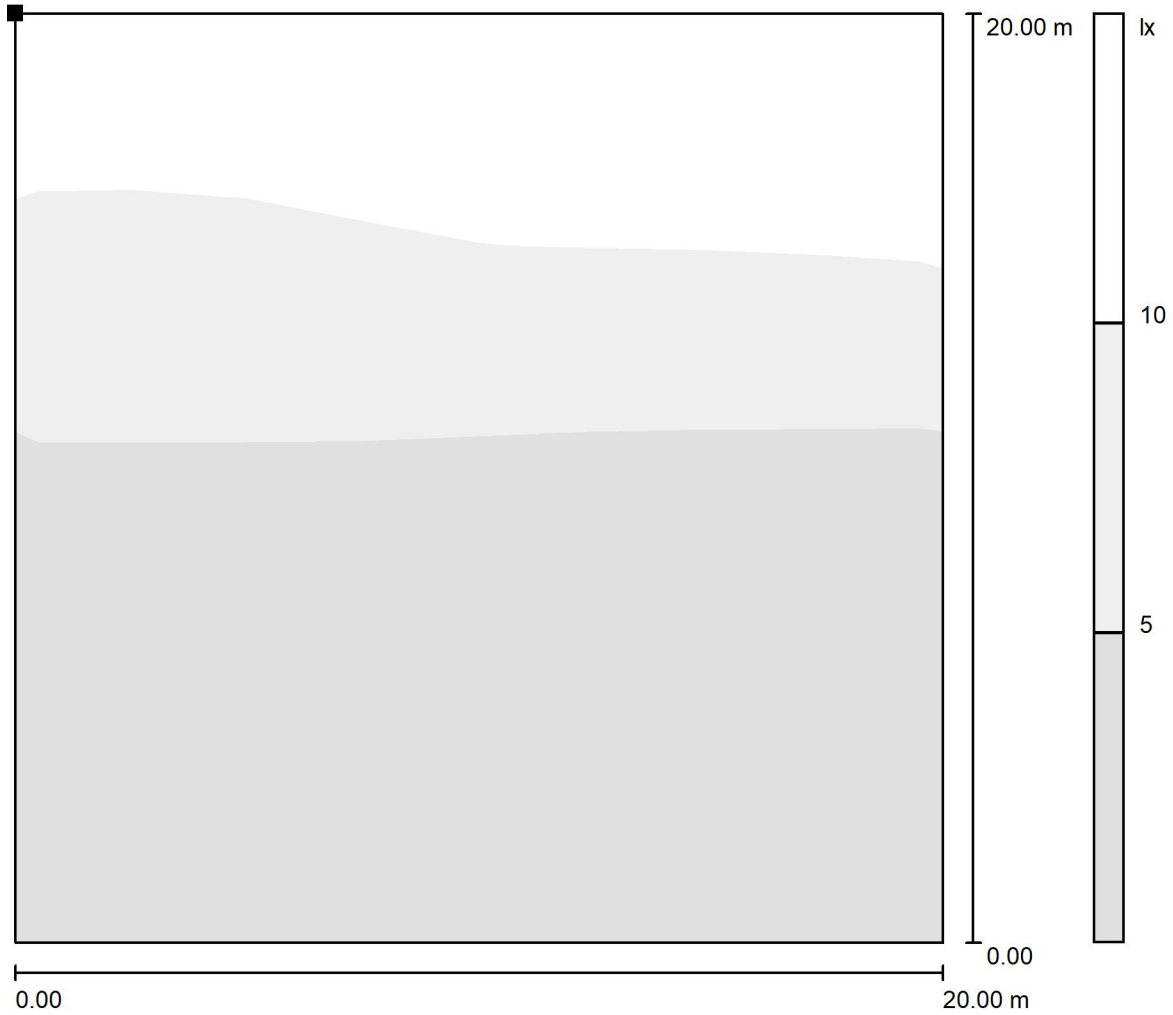
u_0
0.075

E_{min} / E_{max}
0.023



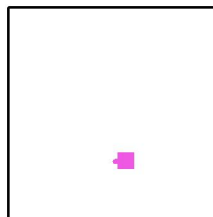
Operator
Telephone
Fax
e-Mail

Exterior Scene 1 / Block 5 2 / Greyscale (E, Perpendicular)



Scale 1 : 163

Position of surface in external scene:
Marked point:
(-188.047 m, 21.404 m, 21.789 m)



Grid: 8 x 8 Points

E_{av} [lx]
4.82

E_{min} [lx]
0.11

E_{max} [lx]
11

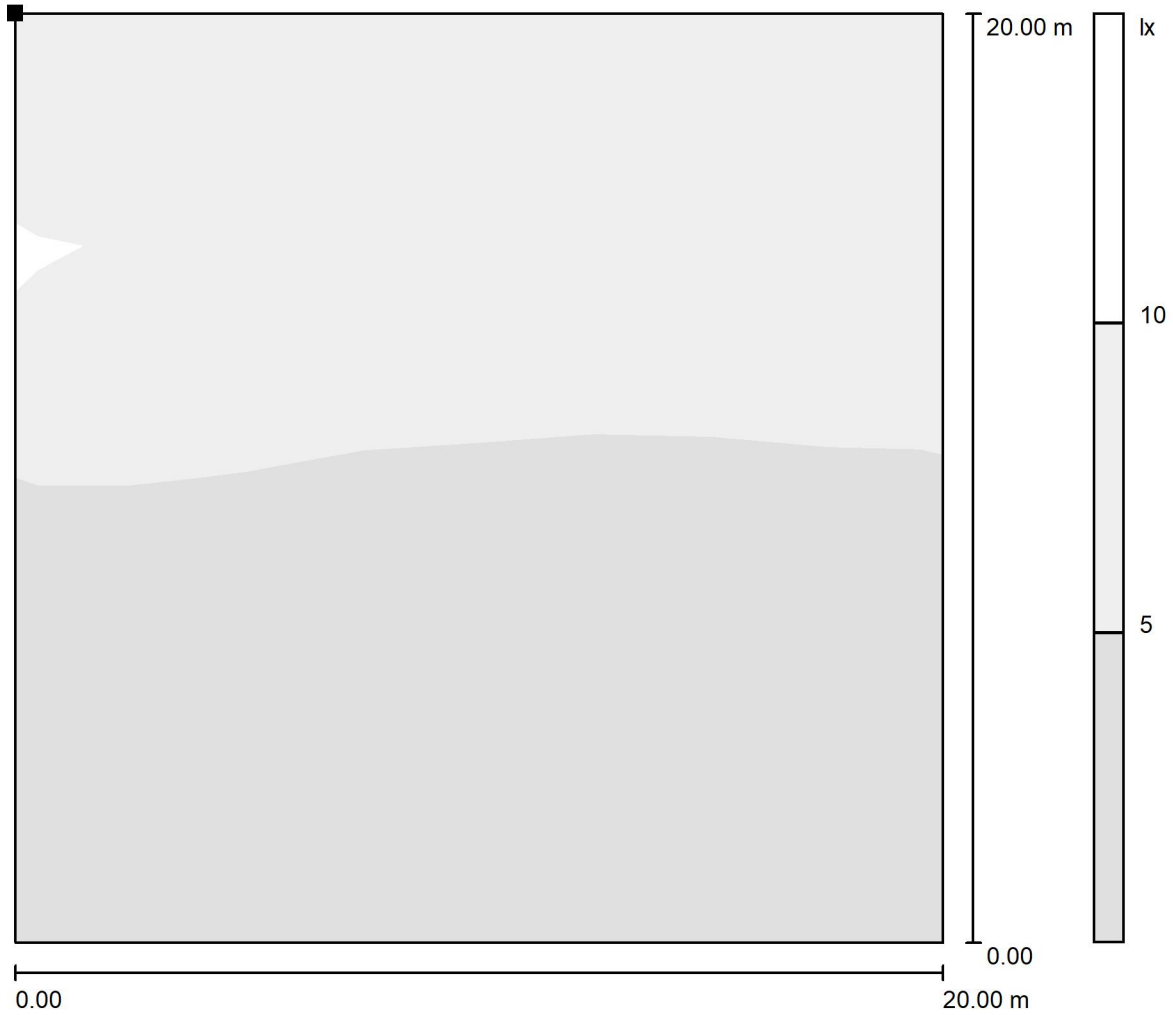
u_0
0.024

E_{min} / E_{max}
0.010



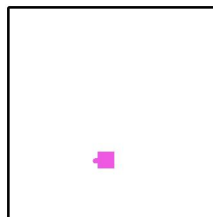
Operator
Telephone
Fax
e-Mail

Exterior Scene 1 / Block 4 1 / Greyscale (E, Perpendicular)



Scale 1 : 163

Position of surface in external scene:
Marked point:
(-223.561 m, 22.366 m, 23.717 m)



Grid: 8 x 8 Points

E_{av} [lx]
4.56

E_{min} [lx]
0.15

E_{max} [lx]
11

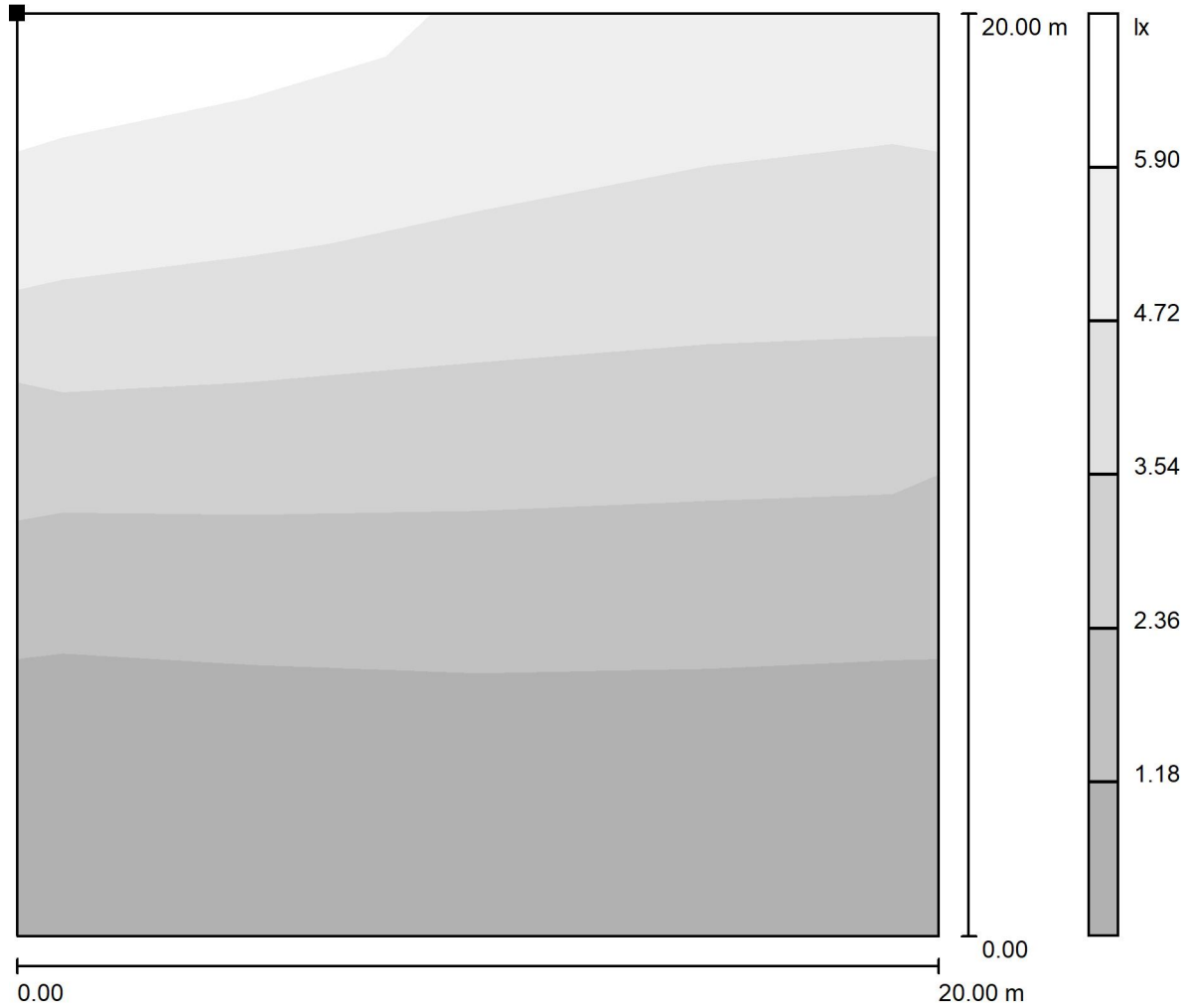
u_0
0.033

E_{min} / E_{max}
0.013



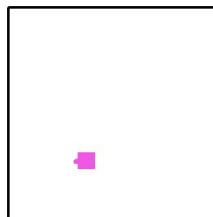
Operator
Telephone
Fax
e-Mail

Exterior Scene 1 / Block 4 2 / Greyscale (E, Perpendicular)



Scale 1 : 163

Position of surface in external scene:
Marked point:
(-259.230 m, 21.164 m, 21.428 m)



Grid: 4 x 4 Points

E_{av} [lx]
2.73

E_{min} [lx]
0.32

E_{max} [lx]
6.22

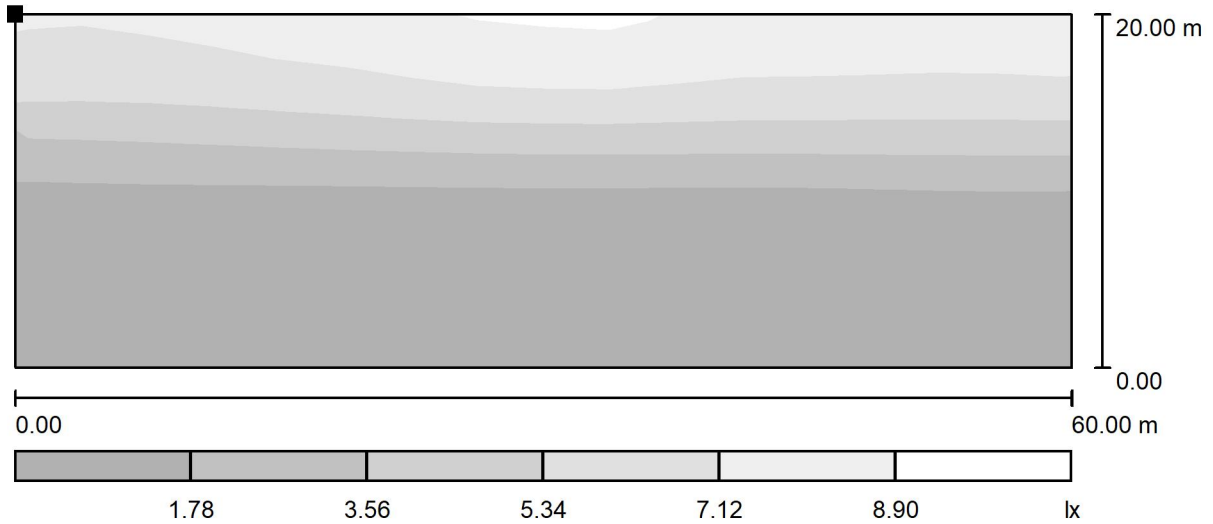
u_0
0.116

E_{min} / E_{max}
0.051



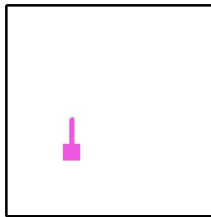
Operator
 Telephone
 Fax
 e-Mail

Exterior Scene 1 / Block 3 / Greyscale (E, Perpendicular)



Scale 1 : 429

Position of surface in external scene:
 Marked point:
 (-282.102 m, 31.887 m, 19.473 m)



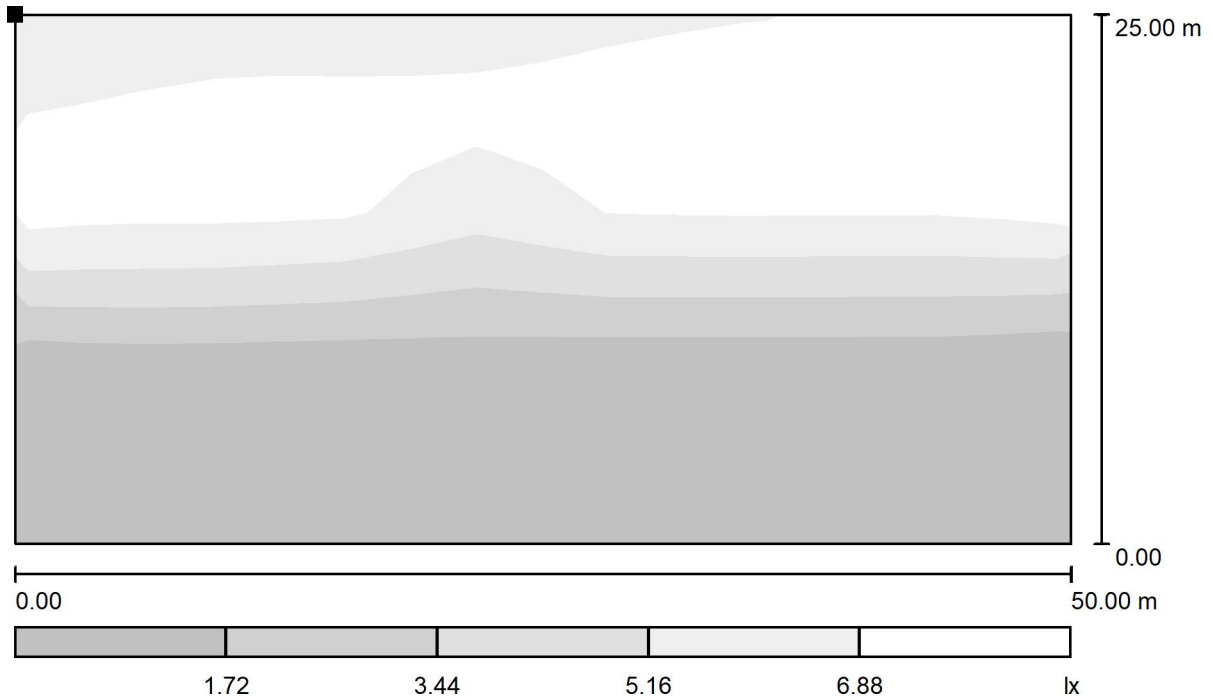
Grid: 16 x 8 Points

E_{av} [lx]	E_{min} [lx]	E_{max} [lx]	u0	E_{min} / E_{max}
3.03	0.07	8.97	0.024	0.008



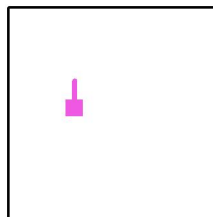
Operator
 Telephone
 Fax
 e-Mail

Exterior Scene 1 / Block 2 / Greyscale (E, Perpendicular)



Scale 1 : 358

Position of surface in external scene:
 Marked point:
 (-281.167 m, 116.237 m, 24.101 m)



Grid: 16 x 8 Points

E_{av} [lx]	E_{min} [lx]	E_{max} [lx]	u0	E_{min} / E_{max}
3.88	0.12	8.69	0.030	0.013