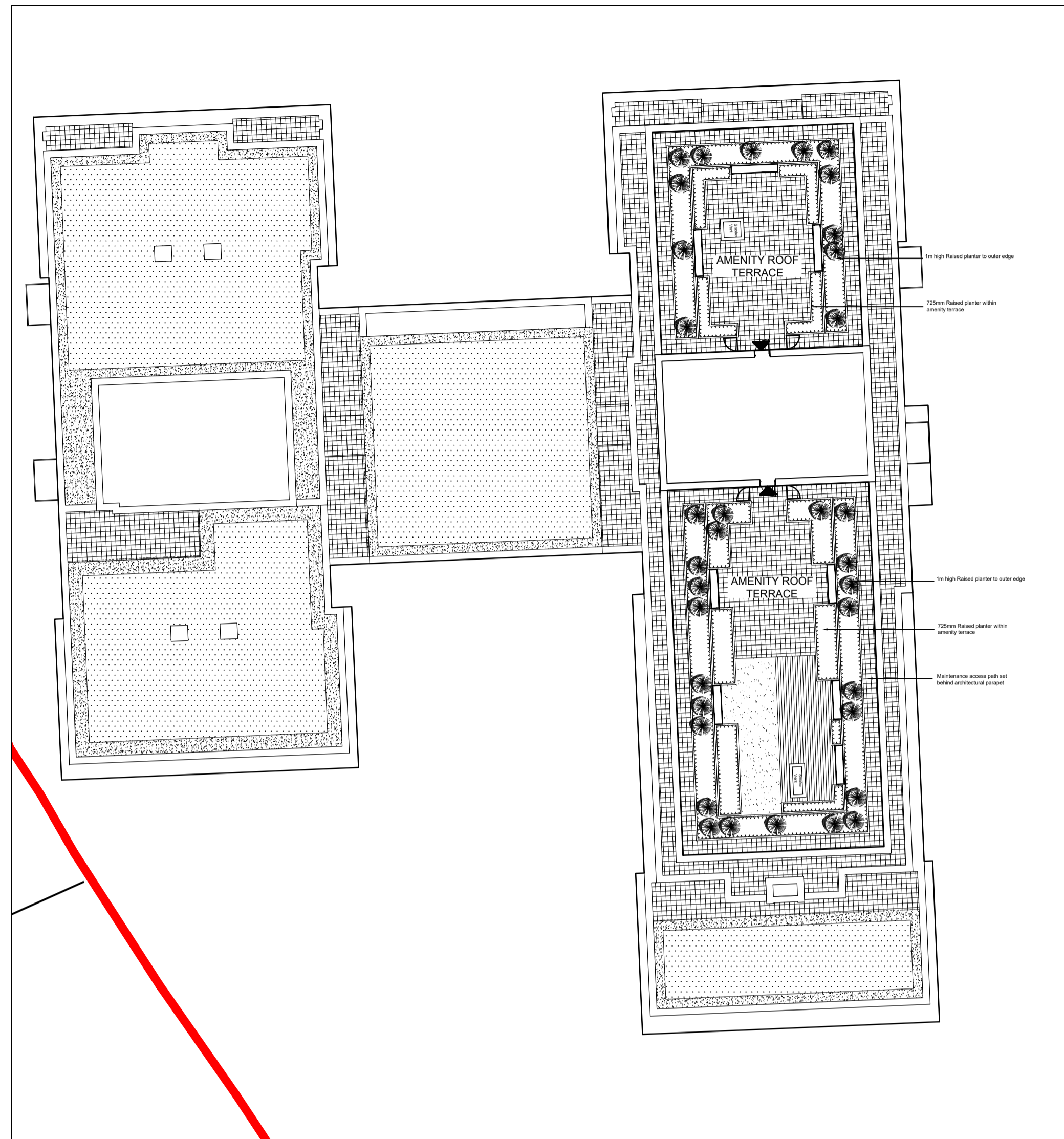
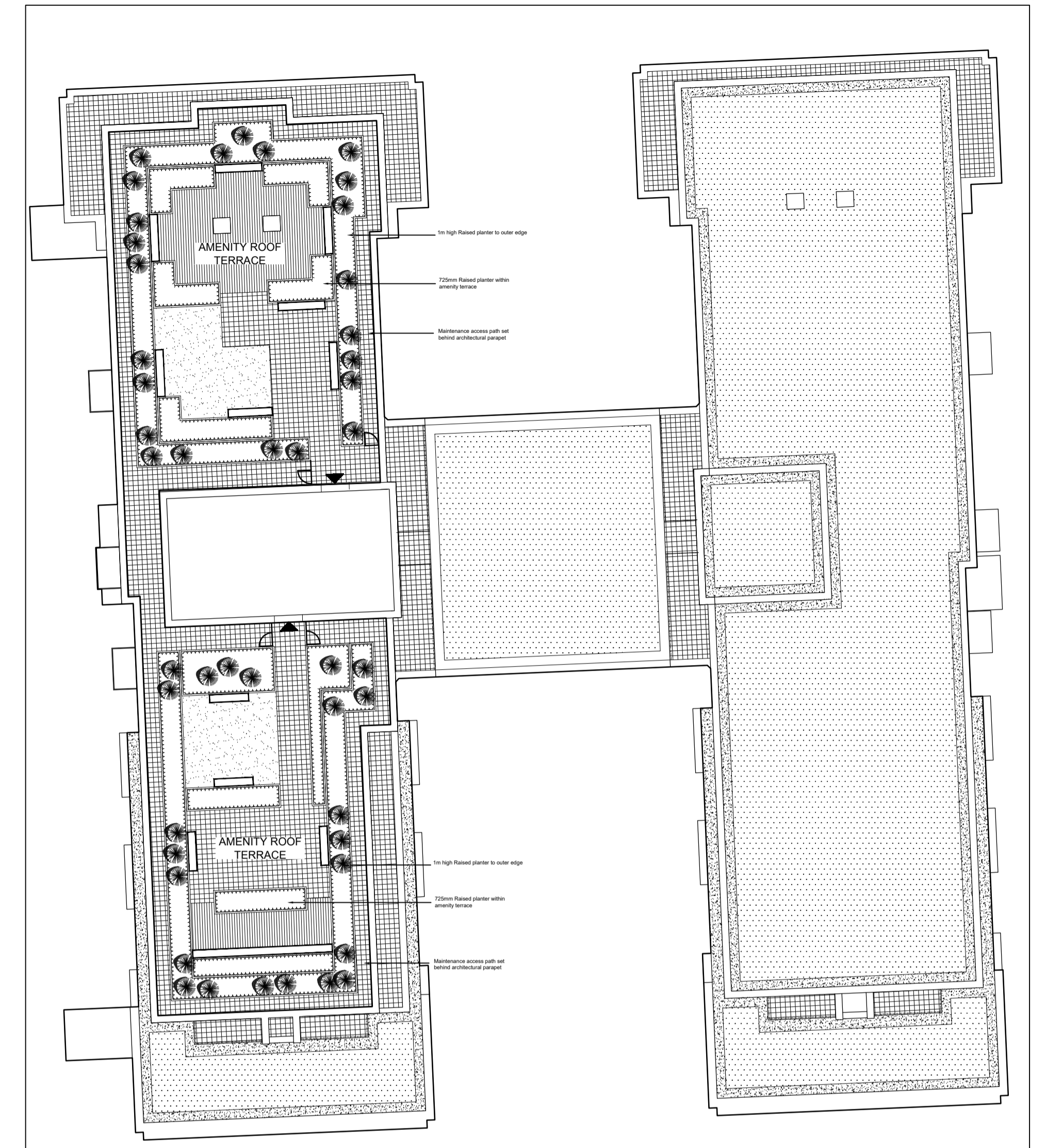


02 - BLOCK 3 LANDSCAPE ROOF PLAN - 1:250



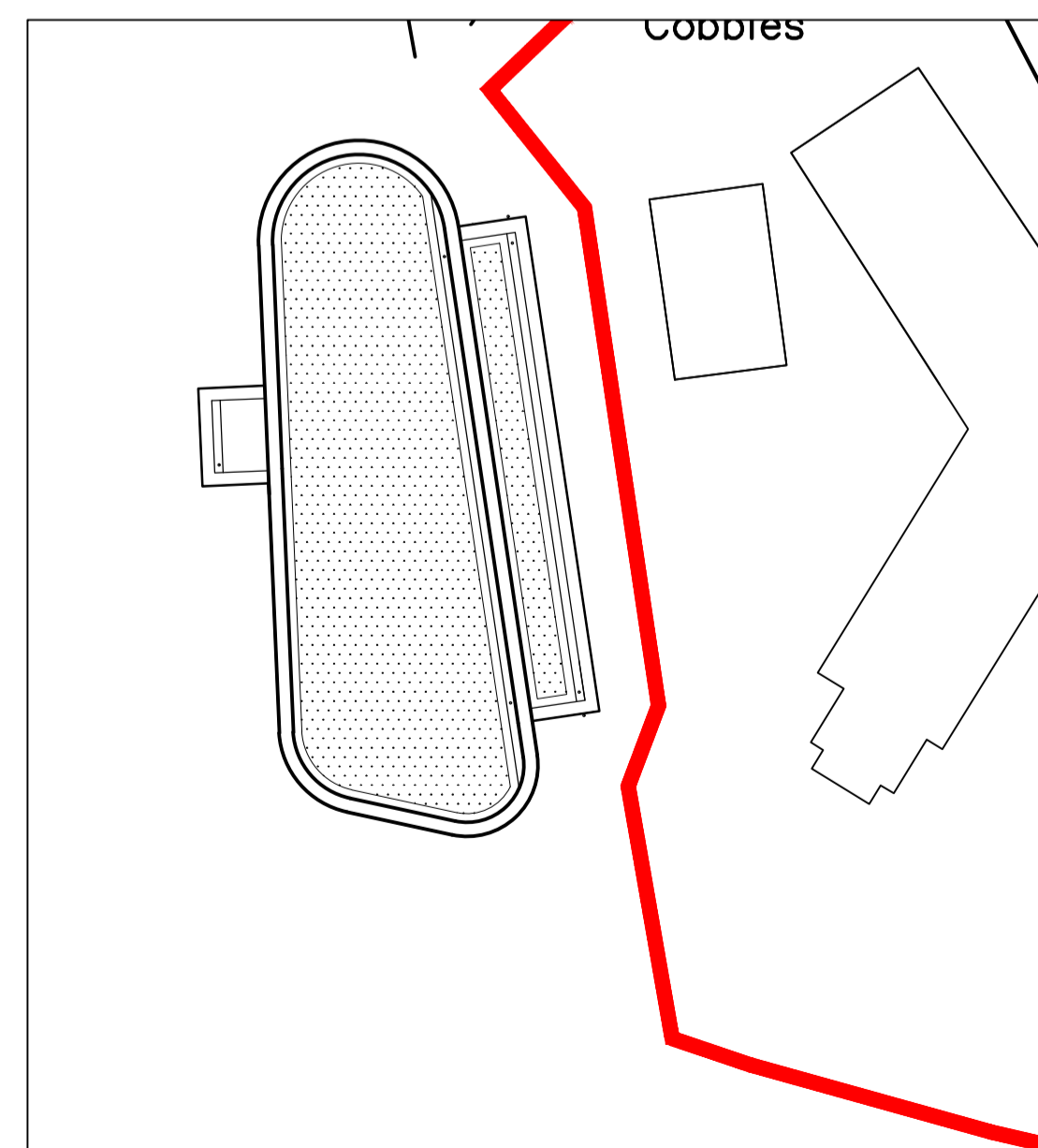
03 - BLOCK 4 LANDSCAPE ROOF PLAN - 1:250



04 - BLOCK 5 LANDSCAPE ROOF PLAN - 1:250



01 LANDSCAPE ROOF KEY PLAN - 1:1000



05 - CAFE & CONCIERGE LANDSCAPE ROOF PLAN - 1:250

**LEGEND**

Application boundary

**SOFT LANDSCAPE**

- Proposed specimen shrub
- Proposed shrub planting
- Proposed artificial turf areas
- Proposed green roof with lightweight bio-diverse planting mix

Over all planting depths:  
 • Shrubs 600mm soil depths (min 350mm topsoil)  
 All topsoil to BS 3882:2015 Specification for topsoil and all subsoil to BS8601 2013 British standard for Subsoil

**HARD LANDSCAPE**

- Composite decking. E.g. Milboard, Enhance Grain, Golden oak or similar and approved
- Vitrified clay paving to private terraces E.g. Marshall's Symphony, 20mm thickness, natural - Ivory colour or similar approved
- Pea shingle gravel

**STREET FURNITURE & STRUCTURES**

- Proposed bench
- Raised planter with metal edging raised planter. E.g. CorTen steel, Kinley's HiGrade Bespoke or similar and approved
- 1.1m Balustrade to edge of private terrace, to tie in with architectural detail
- Residential access points to roof terrace
- Maintenance access gate, to tie in with architectural detail

Note:  
 Refer to architectural layouts for details of roof levels.  
 All structures and material build ups to be designed and approved by an engineer. The roof layouts will be subject to detail design and coordinated of any safety, engineering or plant requirements.  
 Lighting details to be coordinated engineer's detail.  
 Boundary treatment and gates to private terraces to tie in with architectural detail.  
 All building parapet designs to architectural details.

Rev	Description	Date	By/Chk
A	Update to title block	21/11/2019	LP/VR

Status **PLANNING**  
 ARC LANDSCAPE DESIGN AND PLANNING LTD.

Client  
**Woking Football Club**

Project  
**Woking Football Club**

Drawing Title  
**Landscape Roofs General Arrangement - Drawing 2 of 2**

Scale 1:250@A1  
 By/Chk CS/VR  
 Date 29/10/19

Drawing Number **A241-KR-GA06**  
 Revision A

