

DAVID LLOYD LEISURE – EGLEY ROAD, WOKING



David Lloyd JANUARY 2020

David Lloyd
CLUBS

Explanation of changes between submitted and substitution plans/drawings

Background.

Drawings and site plans previously submitted for the proposed David Lloyd Club at Egley Road are based on a building footprint acceptable to David Lloyd Leisure (DLL). However the elevations and materials of the building, hard and soft landscaping are not deemed acceptable to DLL for either budgetary or design reasons.

Importantly tree protection is maintained.

Revised drawings have been submitted which are acceptable to DLL and in the house style - both design and materials - of a typical DLL Club. These are briefly described below.

Site Layout.

This is broadly unchanged other than small variations to the car parking layout - primarily the removal of 10 spaces (280 down to 270 parking spaces) from the previous plans to remove either potential conflict points or to create a more visually appealing layout. The bulk of the removal of spaces is immediately adjacent to the buildings north elevation.

The updated drawings contain standard DLL hard and soft landscaping and boundary treatments which is an additional change from the previously submitted plans.

Building.

The biggest and most material change is to the form of the building.;

- The proposed buildings is circa 4 meters lower in roof height than the previous scheme.
- The roof line has changed from a wave form to a single curved roof.
- The external cladding has changed from a more earthy pallet of colours to a more contemporary design which utilises brick cladding at ground floor, composite aluminium cladding at first floor and aluminium frames to all glazed openings throughout. The roof itself is a standing seam construction.
- The main entrance has moved from the mid-point of the eastern elevation to the north-eastern corner of the building. This serves the dual purpose of being more visible from the car park entrance, but also places the main entrance closer to the car parking the runs along the western end of the northern boundary.

Car Parking spaces removed

Entrance moved to north-east corner

Previous location of main entrance



KEY

- GENERAL VEHICULAR
Black Tarmacadam Surface finish
Sub-base build to Civil Engineers spec.
- PLANT/DELIVERY AREA
Concrete slab. Sub-base build to Civil Engineers spec.
- COURTS - Tennis
Cushioned Acrylic / Artificial grass surface
- PEDESTRIAN ZONES
Paving grade tarmac
- PAVING SLABS
450x450mm, Charcon Andover
Textured, Cream
- PAVING SLABS
450x450mm, Charcon Andover
Textured, Dark Grey
- PAVING SLABS
Charcon Andover Dark Grey in
varying sizes/random lay pattern
400x400, 400x200, 600x200
- SOFT LANDSCAPING
Grassed areas
- SOFT LANDSCAPING
Meadow areas
- ARTIFICIAL GRASS
- PAVING WITH ARTIFICIAL GRASS INSET
Marralis Celestia Skimmer Finish,
600x200mm, 3No. colour mix: Nebula, Lyra
and Luna with inset artificial grass
- DECKING
Milboard plank decking with enhanced grain
on timber frame, with terram layer & gravel fill
- KIDS PLAY - Soft play / cushioned tarmac.
Pin kerb edging & substrate by Contractor
to provide level 100mm below finish level,
soft play wet pour tarmac by DL.
- Decorative Gravel
- LIGHTING
Lighting columns to external tennis courts
- TREES
Proposed Trees

DATE	NO	BY	CHKD	DATE
18/12/2019		JAH	ADJ	
Layout revised to reflect ARC drawings				
06/12/2019		JAH	CM	
Car park layout revised				
27/11/2019		JAH	CM	
Initial issue				
09/08/2019		JAH	CM	
Initial issue				

PLANNING



**WOKING
EGLEY ROAD**

**PROPOSED
EXTERNAL MATERIALS
PLAN**

DATE	SCALE	DATE
AUG 2019	1:500 @ A1	

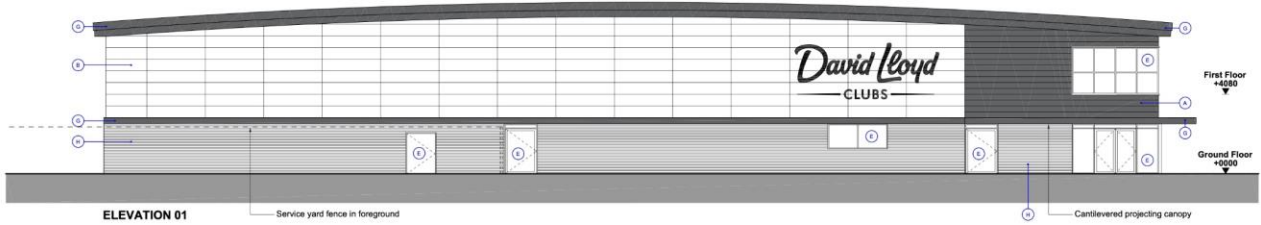
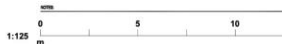
Hadfield Cawkwell Davidson

Other Changes to Site Layout.

- Hard & soft landscaping updated to reflect DLL requirements.

Proposed DLL Substitution Elevations.

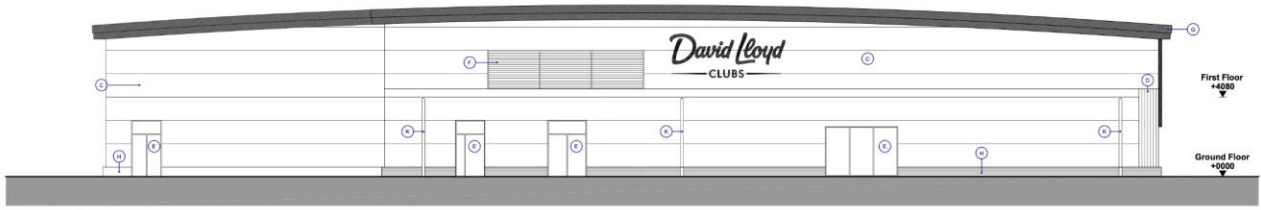
Refer to Design and Access Statement for coloured images



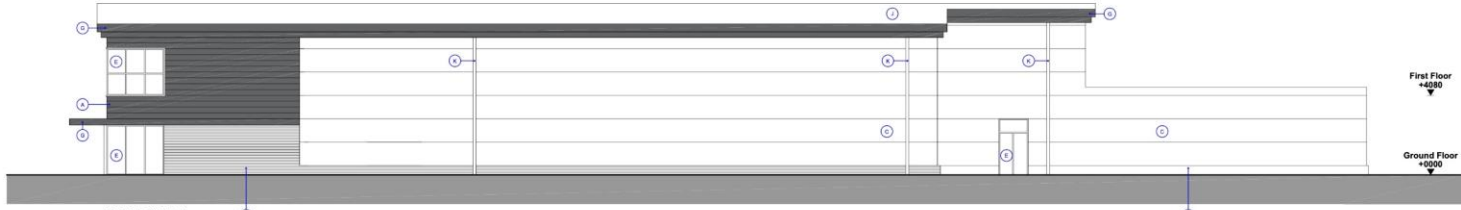
ELEVATION 01



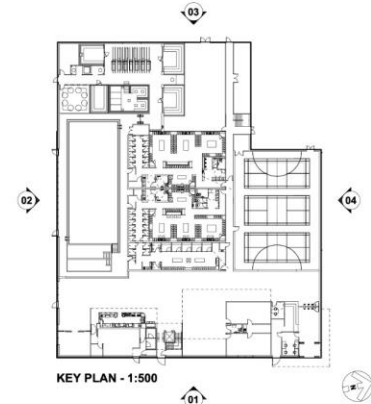
ELEVATION 02



ELEVATION 03



ELEVATION 04



KEY PLAN - 1:500

PROPOSED FINISHES:

- ④ FEATURE COPPER EFFECT CLADDING
- ⑤ CONTEMPORARY RAIN SCREEN CLADDING IN MIXED SHADES OF GREY
- ⑥ HORIZONTAL 'FLAT PANEL' ROCKSPAN COMPOSITE CLADDING (OYSTER RAL - 7035)
- ⑦ TIMBER CLADDING, NORCLAD LTD, SCANDINAVIAN REDWOOD, MICROSHADES, BRUNEA TREATED NWC2
- ⑧ POLYESTER POWDER COATED ALUMINIUM CURTAIN WALLING / GLAZING
- ⑨ POLYESTER POWDER COATED ALUMINIUM METAL LOUVER
- ⑩ POLYESTER POWDER COATED ALUMINIUM PARAPET CAPPING / FLASHING DETAIL
- ⑪ STAFFORDSHIRE BLUE BRINDLE MASONRY
- ⑫ STANDING SEAM ALUMINIUM ROOF
- ⑬ PPC ALUMINIUM RWP

REVISED	NO.	DATE	BY	CHKD	DATE
01	1	05/12/2019	ARB	ARB	05/12/2019
02	2	09/08/2019	ARB	ARB	09/08/2019

PLANNING



**WOKING
EGLEY ROAD**

**PROPOSED
GA ELEVATIONS**

REVISED	NO.	DATE	BY	CHKD	DATE
ARB	1	1:125 @ A1	ARB	ARB	AUG 2019

Hadfield Cawkwell Davidson

2017-254 | A-PL-05-010 | P01

Previously Submitted Elevations.



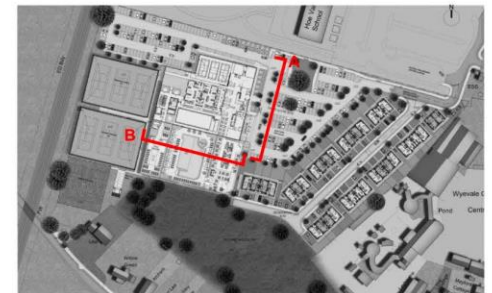
ELEVATION A-A



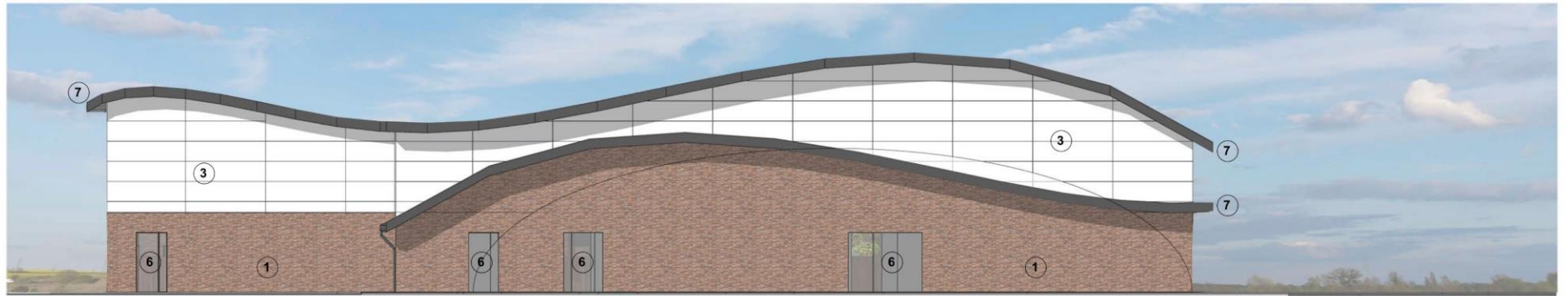
ELEVATION B-B

MATERIAL LEGEND

- 1. MASONRY
- 2. TIMBER EFFECT CLADDING
- 3. METALLIC EFFECT CLADDING
- 4. STANDING SEAM ROOF
- 5. POLYESTER POWDER COATED ALUMINIUM CURTAIN WALL GLAZING
- 6. POLYESTER POWDER COATED ALUMINIUM GLAZING
- 7. POLYESTER POWDER COATED ALUMINIUM CAPPING
- 8. TIMBER PERIMETER FENCING



Previously Submitted Elevations.



ELEVATION C-C



ELEVATION D-D

MATERIAL LEGEND

- 1. MASONRY
- 2. TIMBER EFFECT CLADDING
- 3. METALLIC EFFECT CLADDING
- 4. STANDING SEAM ROOF
- 5. POLYESTER POWDER COATED ALUMINIUM CURTAIN WALL GLAZING
- 6. POLYESTER POWDER COATED ALUMINIUM GLAZING
- 7. POLYESTER POWDER COATED ALUMINIUM CAPPING
- 8. TIMBER PERIMETER FENCING



David Lloyd

CLUBS

DAVID LLOYD LEISURE LTD

THE HANGAR, HATFIELD BUSINESS PARK, HATFIELD, AL10 9AX

T 01707 283500 W davidlloyd.co.uk

David Lloyd Leisure Ltd, Registered in England No. 01516226 VAT No. 740 5477 34

Registered Office: The Hangar, Mosquito Way, Hatfield Business Park, Hatfield, Hertfordshire, AL10 9AX

