

**APPENDIX G – Hazel House: Tabular VSC, ADF, NSL Results, Window Maps, NSL  
Contour Plots and photograph showing roof overhang**



# DAYLIGHT ANALYSIS

WOKING FOOTBALL CLUB, WOKING  
EXISTING vs APPEAL SCHEME  
P2654 - rel3

## DAYLIGHT

Room	Room Use	Window	Existing VSC	Proposed VSC	Loss	%Loss
<b>1 TO 26 HAZEL HOUSE</b>						
R1/140	BEDROOM	W1/140	24.04	21.90	2.14	8.90
R2/140	LKD	W2/140	22.18	20.51	1.67	7.53
R2/140	LKD	W3/140	28.46	25.25	3.21	11.28
R2/140	LKD	W4/140	20.51	6.93	13.58	66.21
R2/140	LKD	W5/140	30.54	17.21	13.33	43.65
R3/140	BEDROOM	W6/140	34.90	21.16	13.74	39.37
R1/141	BEDROOM	W1/141	28.21	26.31	1.90	6.74
R1/141	BEDROOM	W2/141	29.10	27.00	2.10	7.22
R2/141	LKD	W3/141	28.06	26.61	1.45	5.17
R2/141	LKD	W4/141	31.02	28.25	2.77	8.93
R2/141	LKD	W5/141	21.85	9.04	12.81	58.63
R2/141	LKD	W6/141	29.02	16.47	12.55	43.25
R3/141	BEDROOM	W7/141	36.16	23.18	12.98	35.90
R4/141	LKD	W8/141	37.45	24.44	13.01	34.74
R4/141	LKD	W9/141	36.90	23.94	12.96	35.12
R5/141	BEDROOM	W10/141	27.20	17.88	9.32	34.26
R6/141	BEDROOM	W11/141	35.69	24.10	11.59	32.47
R7/141	LKD	W12/141	37.13	25.59	11.54	31.08
R7/141	LKD	W13/141	37.43	26.08	11.35	30.32
R8/141	LKD	W14/141	38.22	27.65	10.57	27.66
R8/141	LKD	W15/141	22.31	21.61	0.70	3.14
R1/142	BEDROOM	W1/142	31.87	30.26	1.61	5.05
R1/142	BEDROOM	W2/142	32.76	30.99	1.77	5.40
R2/142	LKD	W3/142	31.50	30.26	1.24	3.94
R2/142	LKD	W4/142	33.88	31.61	2.27	6.70
R2/142	LKD	W5/142	22.88	11.51	11.37	49.69
R2/142	LKD	W6/142	31.21	19.90	11.31	36.24
R3/142	BEDROOM	W7/142	37.65	25.94	11.71	31.10
R4/142	LKD	W8/142	38.77	26.99	11.78	30.38
R4/142	LKD	W9/142	38.08	26.32	11.76	30.88



# DAYLIGHT ANALYSIS

WOKING FOOTBALL CLUB, WOKING  
EXISTING vs APPEAL SCHEME  
P2654 - rel3

## DAYLIGHT

Room	Room Use	Window	Existing VSC	Proposed VSC	Loss	%Loss
R5/142	BEDROOM	W10/142	28.03	19.25	8.78	31.32
R6/142	BEDROOM	W11/142	36.67	26.11	10.56	28.80
R7/142	LKD	W12/142	38.11	27.60	10.51	27.58
R7/142	LKD	W13/142	38.36	28.01	10.35	26.98
R8/142	LKD	W14/142	38.98	29.36	9.62	24.68
R8/142	LKD	W15/142	22.41	21.77	0.64	2.86
R1/143	BEDROOM	W1/143	34.58	33.15	1.43	4.14
R1/143	BEDROOM	W2/143	35.39	33.87	1.52	4.29
R2/143	LKD	W3/143	31.87	30.82	1.05	3.29
R2/143	LKD	W4/143	35.83	34.00	1.83	5.11
R2/143	LKD	W5/143	38.14	28.50	9.64	25.28
R2/143	LKD	W6/143	36.17	26.41	9.76	26.98
R3/143	BEDROOM	W7/143	37.53	27.70	9.83	26.19
R4/143	LKD	W8/143	38.12	28.19	9.93	26.05
R4/143	LKD	W9/143	37.54	27.61	9.93	26.45
R5/143	BEDROOM	W10/143	27.75	20.14	7.61	27.42
R6/143	BEDROOM	W11/143	36.54	27.46	9.08	24.85
R7/143	LKD	W12/143	37.62	28.59	9.03	24.00
R7/143	LKD	W13/143	37.79	28.90	8.89	23.52
R8/143	LKD	W14/143	38.14	29.87	8.27	21.68
R8/143	LKD	W15/143	38.31	37.77	0.54	1.41
R3/144	LKD	W3/144	22.80	21.44	1.36	5.96
R3/144	LKD	W4/144	23.64	16.28	7.36	31.13
R4/144	BEDROOM	W5/144	23.94	16.45	7.49	31.29
R4/144	BEDROOM	W6/144	12.62	10.86	1.76	13.95
R5/144	BEDROOM	W7/144	14.95	8.91	6.04	40.40
R6/144	BEDROOM	W8/144	22.28	15.40	6.88	30.88
R7/144	BEDROOM	W9/144	23.29	16.50	6.79	29.15
R8/144	LKD	W10/144	23.63	17.08	6.55	27.72
R8/144	LKD	W11/144	18.47	17.93	0.54	2.92



# DAYLIGHT ANALYSIS

WOKING FOOTBALL CLUB, WOKING  
EXISTING vs APPEAL SCHEME  
P2654 - rel3

## DAYLIGHT

Room	Room Use	Window	Existing VSC	Proposed VSC	Loss	%Loss
R8/144	LKD	W12/144	23.90	23.57	0.33	1.38



# DAYLIGHT ANALYSIS

WOKING FOOTBALL CLUB, WOKING  
EXISTING vs APPEAL SCHEME  
P2654 - rel3

## DAYLIGHT

Room	Room Use	Window	Existing		Proposed		Total Loss	%Loss
			ADF	Total	ADF	Total		
R1/140	BEDROOM	W1/140	1.92	1.92	1.82	1.82	0.11	5.56
R2/140	LKD	W2/140	0.40		0.39			
R2/140	LKD	W3/140	1.63		1.53			
R2/140	LKD	W4/140	2.62		1.13			
R2/140	LKD	W5/140	0.83	5.48	0.53	3.59	1.89	34.51
R3/140	BEDROOM	W6/140	2.69	2.69	1.60	1.60	1.09	40.44
R1/141	BEDROOM	W1/141	2.79		2.69			
R1/141	BEDROOM	W2/141	1.87	4.66	1.83	4.52	0.14	3.01
R2/141	LKD	W3/141	0.54		0.54			
R2/141	LKD	W4/141	1.79		1.70			
R2/141	LKD	W5/141	2.82		1.31			
R2/141	LKD	W6/141	0.88	6.03	0.59	4.14	1.89	31.40
R3/141	BEDROOM	W7/141	3.25	3.25	2.25	2.25	1.00	30.90
R4/141	LKD	W8/141	1.12		0.77			
R4/141	LKD	W9/141	2.05	3.17	1.41	2.18	0.99	31.23
R5/141	BEDROOM	W10/141	3.09	3.09	2.28	2.28	0.81	26.22
R6/141	BEDROOM	W11/141	3.25	3.25	2.35	2.35	0.90	27.64
R7/141	LKD	W12/141	1.18		0.85			
R7/141	LKD	W13/141	2.26	3.44	1.66	2.51	0.93	27.13
R8/141	LKD	W14/141	3.38		2.56			
R8/141	LKD	W15/141	2.88	6.26	2.83	5.39	0.88	13.97
R1/142	BEDROOM	W1/142	3.07		2.99			
R1/142	BEDROOM	W2/142	2.07	5.14	2.03	5.02	0.12	2.33
R2/142	LKD	W3/142	0.60		0.60			
R2/142	LKD	W4/142	1.93		1.85			
R2/142	LKD	W5/142	2.93		1.64			
R2/142	LKD	W6/142	0.92	6.38	0.66	4.76	1.63	25.47
R3/142	BEDROOM	W7/142	3.34	3.34	2.44	2.44	0.91	27.18
R4/142	LKD	W8/142	1.15		0.83			
R4/142	LKD	W9/142	2.11	3.26	1.53	2.36	0.90	27.63



# DAYLIGHT ANALYSIS

WOKING FOOTBALL CLUB, WOKING  
EXISTING vs APPEAL SCHEME  
P2654 - rel3

## DAYLIGHT

Room	Room Use	Window	Existing		Proposed		Total Loss	%Loss
			ADF	Total	ADF	Total		
R5/142	BEDROOM	W10/142	3.15	3.15	2.40	2.40	0.76	24.04
R6/142	BEDROOM	W11/142	3.33	3.33	2.51	2.51	0.82	24.75
R7/142	LKD	W12/142	1.21		0.90			
R7/142	LKD	W13/142	2.32	3.53	1.76	2.67	0.86	24.38
R8/142	LKD	W14/142	3.46		2.70			
R8/142	LKD	W15/142	2.89	6.35	2.85	5.54	0.81	12.76
R1/143	BEDROOM	W1/143	2.93		2.86			
R1/143	BEDROOM	W2/143	1.99	4.92	1.96	4.81	0.11	2.17
R2/143	LKD	W3/143	0.56		0.56			
R2/143	LKD	W4/143	1.79		1.73			
R2/143	LKD	W5/143	4.03		3.06			
R2/143	LKD	W6/143	0.91	7.29	0.69	6.03	1.26	17.33
R3/143	BEDROOM	W7/143	2.95	2.95	2.20	2.20	0.75	25.53
R4/143	LKD	W8/143	1.03		0.76			
R4/143	LKD	W9/143	1.86	2.89	1.38	2.13	0.76	26.24
R5/143	BEDROOM	W10/143	2.80	2.80	2.14	2.14	0.66	23.64
R6/143	BEDROOM	W11/143	2.93	2.93	2.24	2.24	0.70	23.69
R7/143	LKD	W12/143	1.08		0.82			
R7/143	LKD	W13/143	2.03	3.10	1.56	2.38	0.72	23.28
R8/143	LKD	W14/143	2.99		2.37			
R8/143	LKD	W15/143	4.05	7.04	4.01	6.38	0.66	9.39
R3/144	LKD	W3/144	2.36		2.25			
R3/144	LKD	W4/144	4.96	7.32	3.62	5.87	1.45	19.83
R4/144	BEDROOM	W5/144	3.07		2.22			
R4/144	BEDROOM	W6/144	1.07	4.14	1.01	3.23	0.91	22.00
R5/144	BEDROOM	W7/144	3.57	3.57	2.35	2.35	1.21	34.02
R6/144	BEDROOM	W8/144	4.41	4.41	3.22	3.22	1.18	26.84
R7/144	BEDROOM	W9/144	3.57	3.57	2.67	2.67	0.91	25.33
R8/144	LKD	W10/144	3.21		2.45			
R8/144	LKD	W11/144	1.96		1.92			



# DAYLIGHT ANALYSIS

WOKING FOOTBALL CLUB, WOKING  
EXISTING vs APPEAL SCHEME  
P2654 - rel3

## DAYLIGHT

Room	Room Use	Window	Existing		Proposed		Total Loss	%Loss
			ADF	Total	ADF	Total		
R8/144	LKD	W12/144	1.98	7.14	1.96	6.33	0.81	11.38



# DAYLIGHT ANALYSIS

WOKING FOOTBALL CLUB, WOKING  
EXISTING vs APPEAL SCHEME  
Omitting Balcony and Roof Overhang Effects  
P2654 - rel3

Room	Room Use	Window	Existing VSC	Proposed VSC	Loss	%Loss
<b>1 TO 26 HAZEL HOUSE</b>						
R1/140	BEDROOM	W1/140	24.79	22.65	2.14	8.63
R2/140	LKD	W2/140	23.00	21.32	1.68	7.30
R2/140	LKD	W3/140	29.20	25.99	3.21	10.99
R2/140	LKD	W4/140	36.48	22.52	13.96	38.27
R2/140	LKD	W5/140	36.39	22.46	13.93	38.28
R3/140	BEDROOM	W6/140	36.32	22.55	13.77	37.91
R1/141	BEDROOM	W1/141	28.97	27.08	1.89	6.52
R1/141	BEDROOM	W2/141	29.94	27.85	2.09	6.98
R2/141	LKD	W3/141	28.91	27.46	1.45	5.02
R2/141	LKD	W4/141	31.80	29.04	2.76	8.68
R2/141	LKD	W5/141	38.04	24.91	13.13	34.52
R2/141	LKD	W6/141	35.62	22.52	13.10	36.78
R3/141	BEDROOM	W7/141	37.07	24.05	13.02	35.12
R4/141	LKD	W8/141	37.88	24.85	13.03	34.40
R4/141	LKD	W9/141	37.09	24.13	12.96	34.94
R5/141	BEDROOM	W10/141	27.20	17.88	9.32	34.26
R6/141	BEDROOM	W11/141	35.71	24.12	11.59	32.46
R7/141	LKD	W12/141	37.18	25.64	11.54	31.04
R7/141	LKD	W13/141	37.48	26.13	11.35	30.28
R8/141	LKD	W14/141	38.24	27.67	10.57	27.64
R8/141	LKD	W15/141	39.47	38.78	0.69	1.75
R1/142	BEDROOM	W1/142	32.45	30.84	1.61	4.96
R1/142	BEDROOM	W2/142	33.42	31.65	1.77	5.30
R2/142	LKD	W3/142	32.10	30.86	1.24	3.86
R2/142	LKD	W4/142	34.43	32.16	2.27	6.59
R2/142	LKD	W5/142	39.02	27.35	11.67	29.91
R2/142	LKD	W6/142	36.68	24.94	11.74	32.01
R3/142	BEDROOM	W7/142	38.14	26.40	11.74	30.78
R4/142	LKD	W8/142	38.93	27.14	11.79	30.29
R4/142	LKD	W9/142	38.15	26.39	11.76	30.83





# DAYLIGHT ANALYSIS

WOKING FOOTBALL CLUB, WOKING  
EXISTING vs APPEAL SCHEME  
Omitting Balcony and Roof Overhang Effects  
P2654 - rel3

Room	Room Use	Window	Existing VSC	Proposed VSC	Loss	%Loss
R5/142	BEDROOM	W10/142	28.03	19.25	8.78	31.32
R6/142	BEDROOM	W11/142	36.75	26.18	10.57	28.76
R7/142	LKD	W12/142	38.22	27.71	10.51	27.50
R7/142	LKD	W13/142	38.45	28.10	10.35	26.92
R8/142	LKD	W14/142	39.01	29.39	9.62	24.66
R8/142	LKD	W15/142	39.49	38.85	0.64	1.62
R1/143	BEDROOM	W1/143	34.85	33.41	1.44	4.13
R1/143	BEDROOM	W2/143	35.71	34.19	1.52	4.26
R2/143	LKD	W3/143	32.06	31.01	1.05	3.28
R2/143	LKD	W4/143	36.04	34.20	1.84	5.11
R2/143	LKD	W5/143	38.14	28.50	9.64	25.28
R2/143	LKD	W6/143	36.17	26.41	9.76	26.98
R3/143	BEDROOM	W7/143	37.53	27.70	9.83	26.19
R4/143	LKD	W8/143	38.12	28.19	9.93	26.05
R4/143	LKD	W9/143	37.54	27.61	9.93	26.45
R5/143	BEDROOM	W10/143	27.97	20.36	7.61	27.21
R6/143	BEDROOM	W11/143	36.71	27.64	9.07	24.71
R7/143	LKD	W12/143	37.77	28.74	9.03	23.91
R7/143	LKD	W13/143	37.89	29.00	8.89	23.46
R8/143	LKD	W14/143	38.16	29.89	8.27	21.67
R8/143	LKD	W15/143	38.31	37.77	0.54	1.41
R3/144	LKD	W3/144	38.99	37.63	1.36	3.49
R3/144	LKD	W4/144	39.54	32.19	7.35	18.59
R4/144	BEDROOM	W5/144	39.54	32.05	7.49	18.94
R4/144	BEDROOM	W6/144	30.36	28.59	1.77	5.83
R5/144	BEDROOM	W7/144	33.08	27.04	6.04	18.26
R6/144	BEDROOM	W8/144	38.98	32.09	6.89	17.68
R7/144	BEDROOM	W9/144	39.43	32.63	6.80	17.25
R8/144	LKD	W10/144	39.52	32.97	6.55	16.57
R8/144	LKD	W11/144	36.47	35.93	0.54	1.48



**DAYLIGHT ANALYSIS**  
WOKING FOOTBALL CLUB, WOKING  
EXISTING vs APPEAL SCHEME  
Omitting Balcony and Roof Overhang Effects  
P2654 - rel3

Room	Room Use	Window	Existing VSC	Proposed VSC	Loss	%Loss
R8/144	LKD	W12/144	39.62	39.28	0.34	0.86



# NSL ANALYSIS

WOKING FOOTBALL CLUB, WOKING  
EXISTING vs APPEAL SCHEME

P2654 - rel3

## NSL

Room	Room Use	Whole Room sq ft	Existing sq ft	Proposed sq ft	Loss sq ft	%Loss
R1/140	BEDROOM	117.6	57.8	57.8	0.0	0.0
R2/140	LKD	277.5	277.5	268.8	8.7	3.1
R3/140	BEDROOM	145.4	144.1	57.8	86.3	59.9
R1/141	BEDROOM	108.2	107.4	107.4	0.0	0.0
R2/141	LKD	275.4	275.4	268.6	6.8	2.5
R3/141	BEDROOM	145.4	144.1	80.8	63.3	43.9
R4/141	LKD	275.4	273.9	129.4	144.5	52.8
R5/141	BEDROOM	123.7	121.3	79.5	41.9	34.5
R6/141	BEDROOM	144.4	143.0	79.7	63.3	44.3
R7/141	LKD	261.0	259.0	142.4	116.6	45.0
R8/141	LKD	287.6	287.5	279.5	8.0	2.8
R1/142	BEDROOM	108.2	107.4	107.4	0.0	0.0
R2/142	LKD	275.4	275.4	270.6	4.8	1.7
R3/142	BEDROOM	145.4	144.1	96.3	47.8	33.2
R4/142	LKD	275.4	273.9	152.9	121.0	44.2
R5/142	BEDROOM	123.7	121.3	93.5	27.8	22.9
R6/142	BEDROOM	144.4	143.1	93.8	49.3	34.5
R7/142	LKD	261.0	259.0	161.8	97.2	37.5
R8/142	LKD	287.6	287.5	280.1	7.4	2.6
R1/143	BEDROOM	108.2	107.4	107.4	0.0	0.0
R2/143	LKD	275.4	275.4	270.7	4.7	1.7
R3/143	BEDROOM	145.4	144.1	104.9	39.2	27.2
R4/143	LKD	275.4	273.9	172.1	101.8	37.2
R5/143	BEDROOM	123.7	122.0	99.5	22.5	18.4
R6/143	BEDROOM	144.4	143.1	102.5	40.6	28.4
R7/143	LKD	261.0	259.0	180.2	78.8	30.4
R8/143	LKD	287.6	287.5	282.5	5.1	1.8
R3/144	LKD	306.8	306.8	306.8	0.0	0.0
R4/144	BEDROOM	140.3	140.3	132.8	7.5	5.3
R5/144	BEDROOM	147.6	137.8	137.5	0.4	0.3
R6/144	BEDROOM	151.1	148.8	148.1	0.7	0.5
R7/144	BEDROOM	142.6	142.4	137.0	5.4	3.8
R8/144	LKD	348.2	348.2	348.0	0.1	0.0



Sources: Woods Hardwick  
 Site Survey  
 Drawings - 0189-7-8598-870B, 0189-7-851C-854C

Accucities Ltd  
 3D CAD Model of Site & Surroundings  
 001718\_Woking Football Club\_HD\_MASTER.dwg

Woking Planning Portal - Planning Application Drawings  
 PLAN/2013/0659 - Hazel House, Beech House, 54-66 Westfield Ave  
 PLAN/2019/0463 - Ivylea  
 PLAN/2006/0558 - Cotswolds

Leach Rhodes Walker Architects  
 Proposed Scheme Model (received 01/03/21)  
 Site 1&2 Sektchup.skp

Key:

Scheme Confirmed:	-
Date:	-

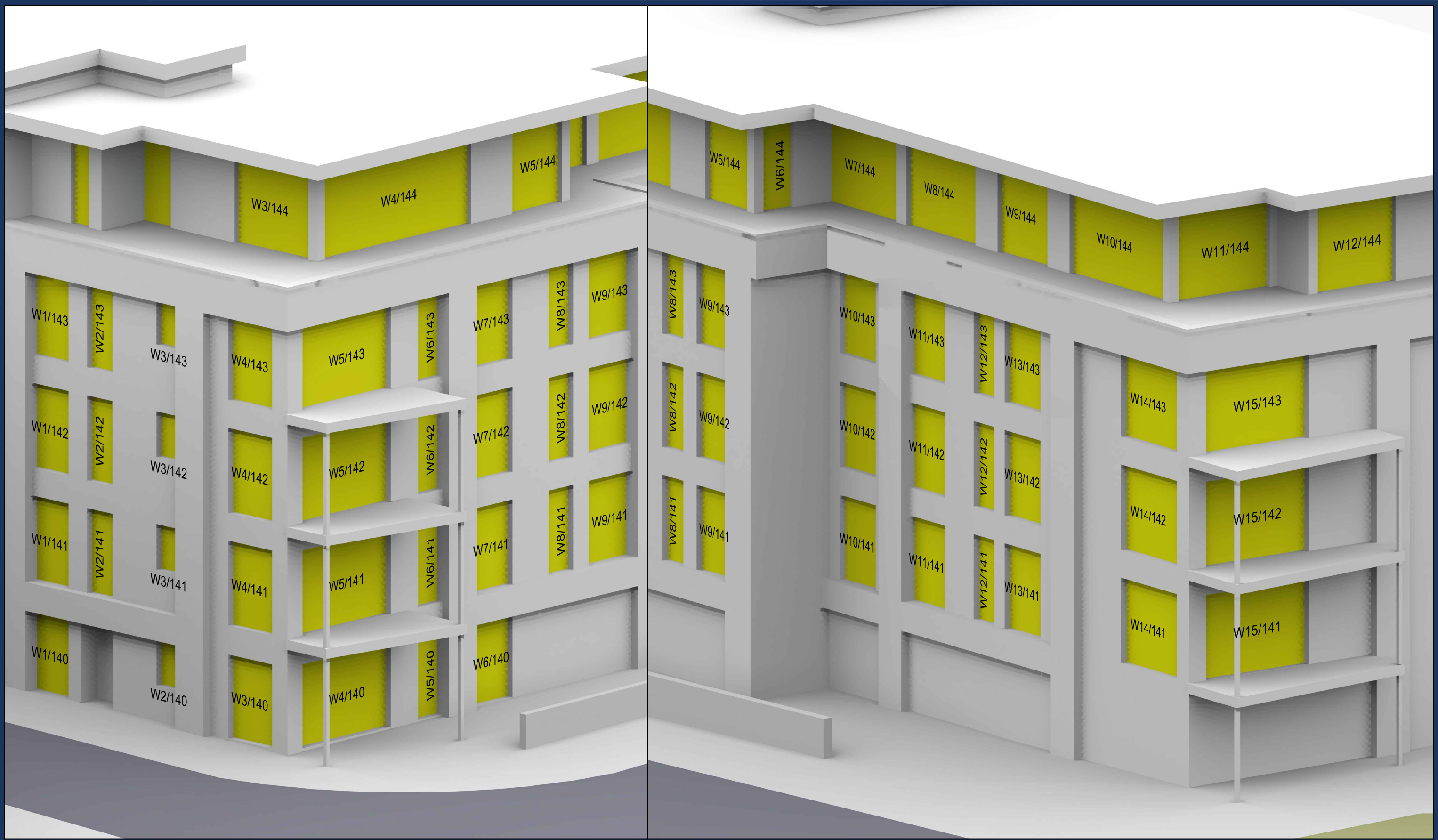
Project: Woking Football Club  
 Woking  
 Surrey

Drawn By:	SDJ
Scale:	NTS
Date:	Mar 21

Title: Window Map  
 1-26 Hazel House

Dwg No:	P2654/WM/05
Rel:	01





Sources: Woods Hardwick  
 Site Survey  
 Drawings - 0189-7-8598-870B, 0189-7-851C-854C

Accuties Ltd  
 3D CAD Model of Site & Surroundings  
 001718\_Woking Football Club\_HD\_MASTER.dwg

Woking Planning Portal - Planning Application Drawings  
 PLAN/2013/0659 - Hazel House, Beech House, 54-66 Westfield Ave  
 PLAN/2019/0463 - Ivylea  
 PLAN/2006/0558 - Cotswolds

Leach Rhodes Walker Architects  
 Proposed Scheme Model (received 01/03/21)  
 Site 1&2 Sektchup.skp

Key:

Scheme Confirmed: -

Date: -

Project: Woking Football Club  
 Woking  
 Surrey

Drawn By: SDJ

Scale: NTS

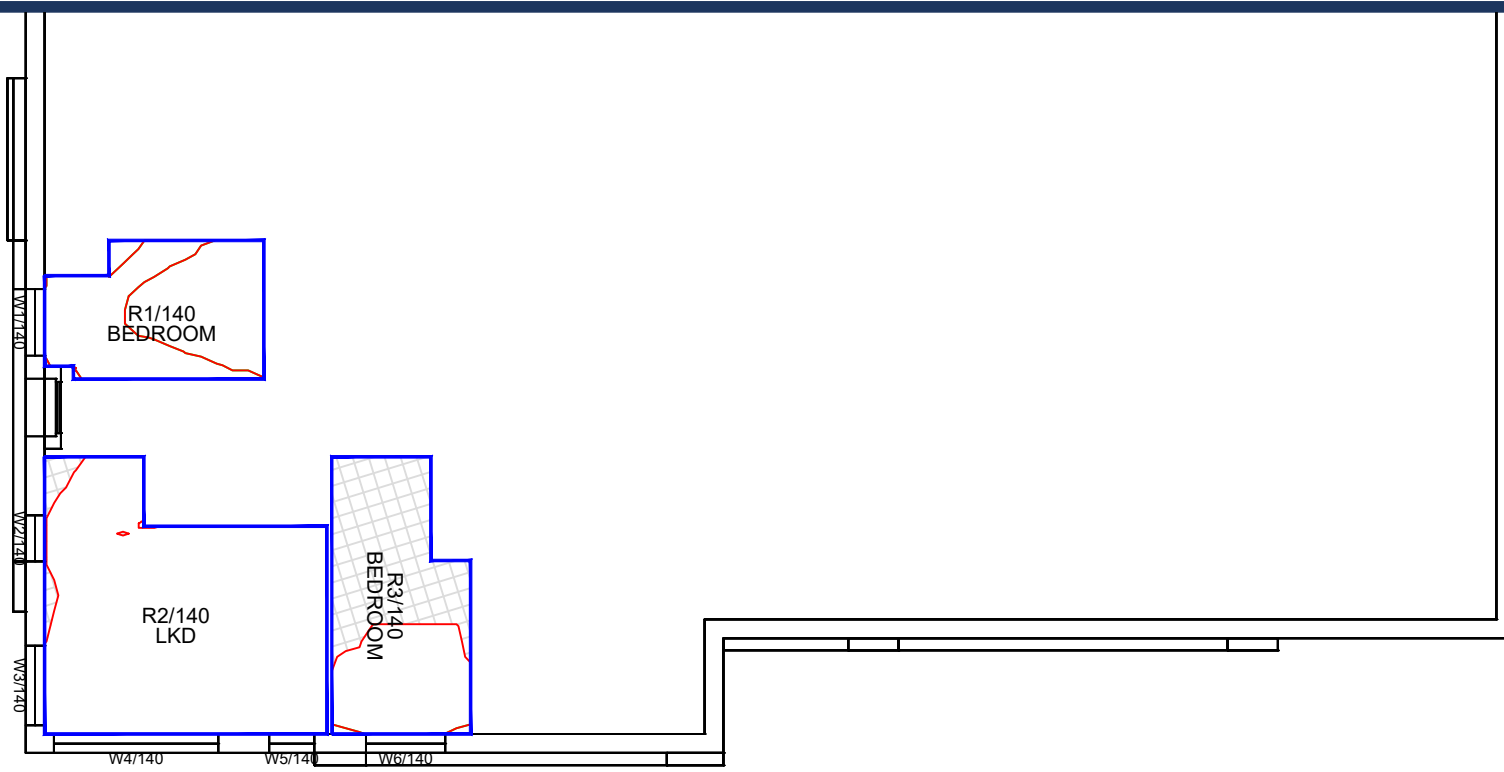
Date: Mar 21

Title: Window Map  
 1-26 Hazel House

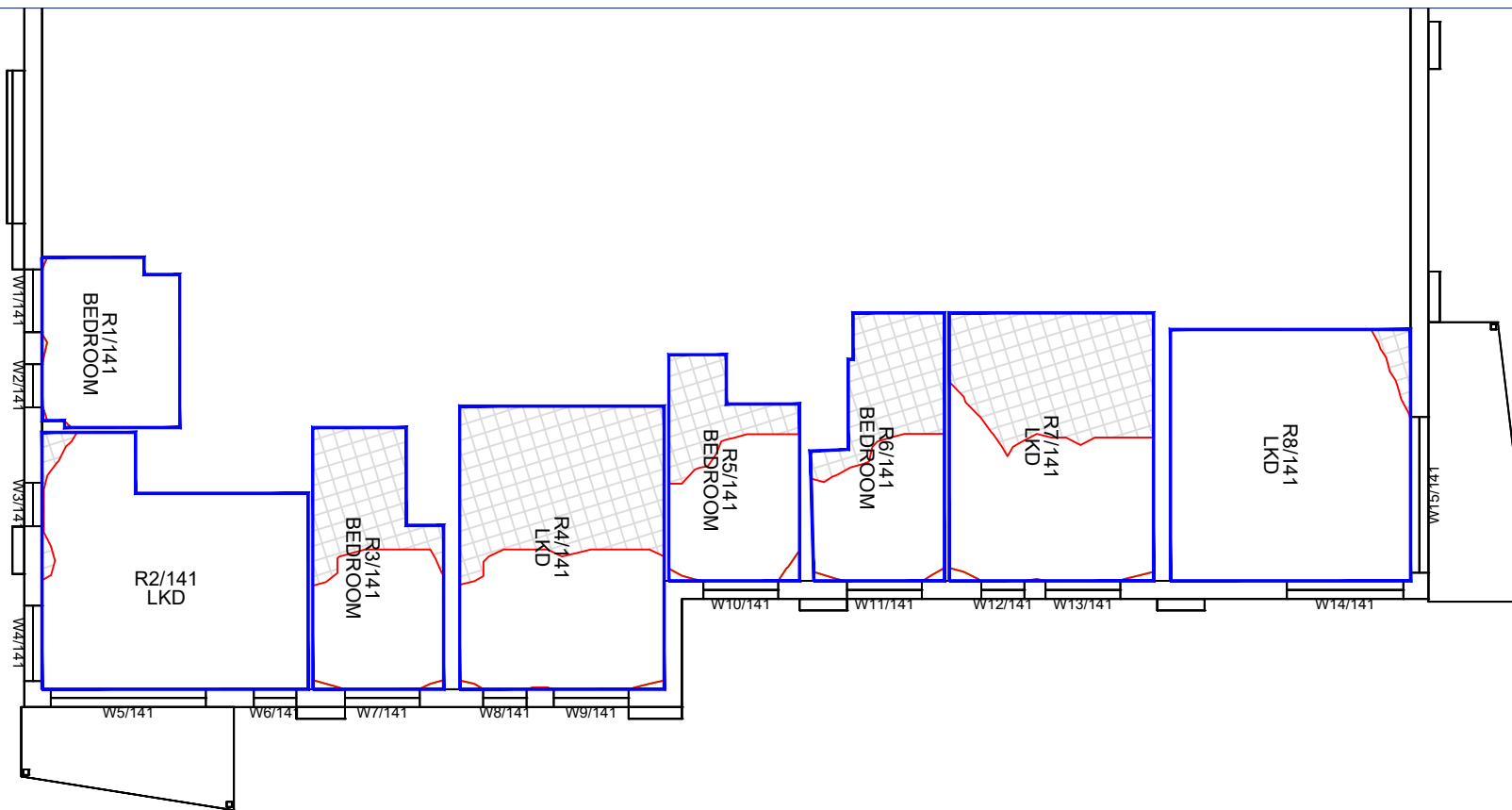
Dwg No: P2654/WM/06

Rel: 01





Ground Floor



First Floor

Sources: Woods Hardwick  
Site Survey  
Drawings - 0189-7-8598-870B, 0189-7-851C-854C

Accucities Ltd  
3D CAD Model of Site & Surroundings  
001718\_Woking Football Club\_HD\_MASTER.dwg

Woking Planning Portal - Planning Application Drawings  
PLAN/2013/0659 - Hazel House, Beech House, 54-66 Westfield Ave  
PLAN/2019/0463 - Ivylea  
PLAN/2006/0558 - Cotswolds

Leach Rhodes Walker Architects  
Proposed Scheme Model (received 15/03/21)  
7884 - Master Model 2.skp

- Key:
- Existing NSL Contour
  - Proposed NSL Contour
  - Region of Loss / Gain
  - Main Habitable Room
  - Non-Habitable Room

Project: Woking Football Club  
Woking  
Surrey

Title: Daylight & Sunlight Contours  
Proposed Scheme 15/03/21  
1 to 26 Hazel House

Scheme Confirmed: -

Date: -

Drawn By: SDJ

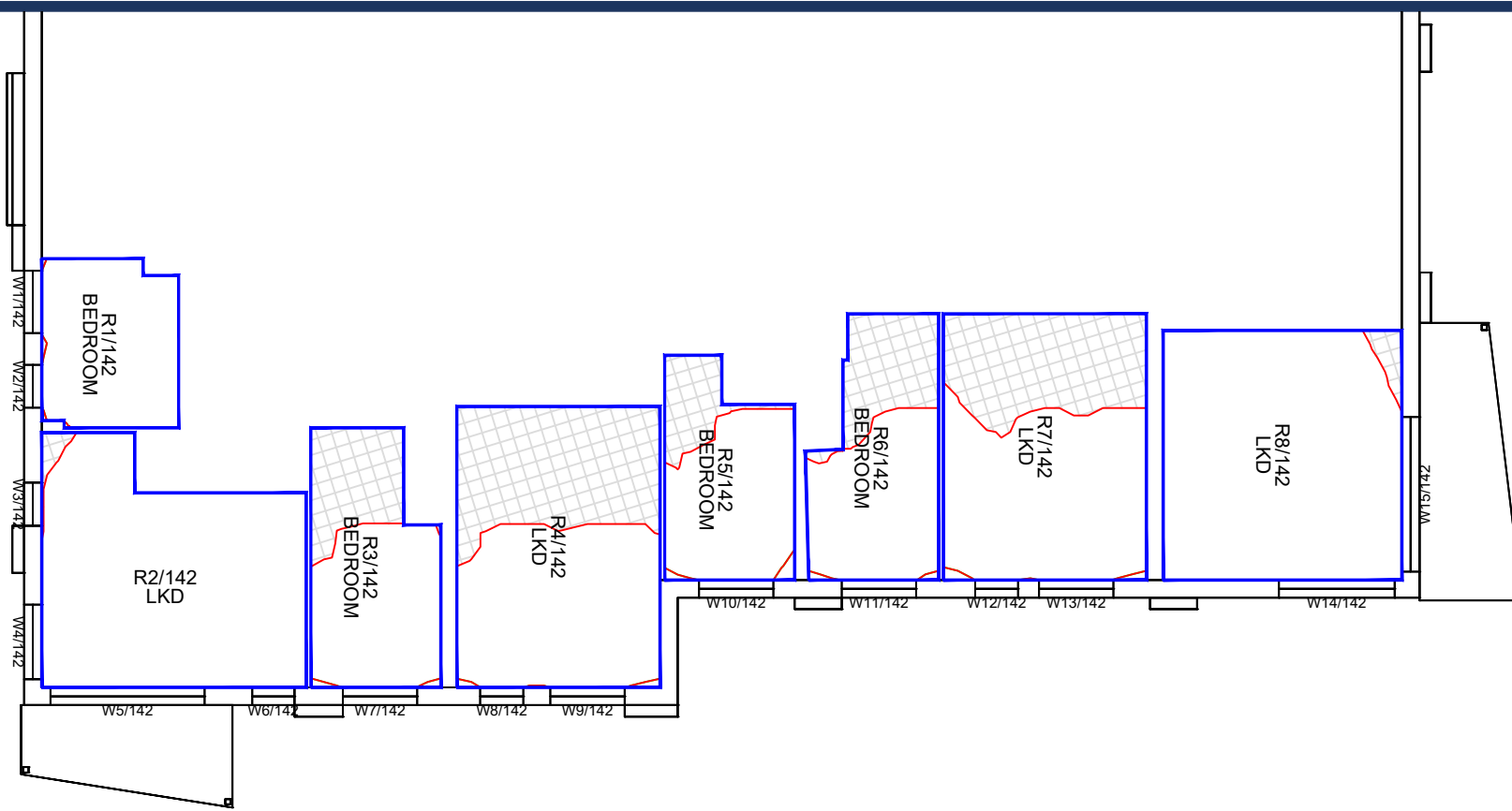
Scale: 1:150

Date: Mar 21

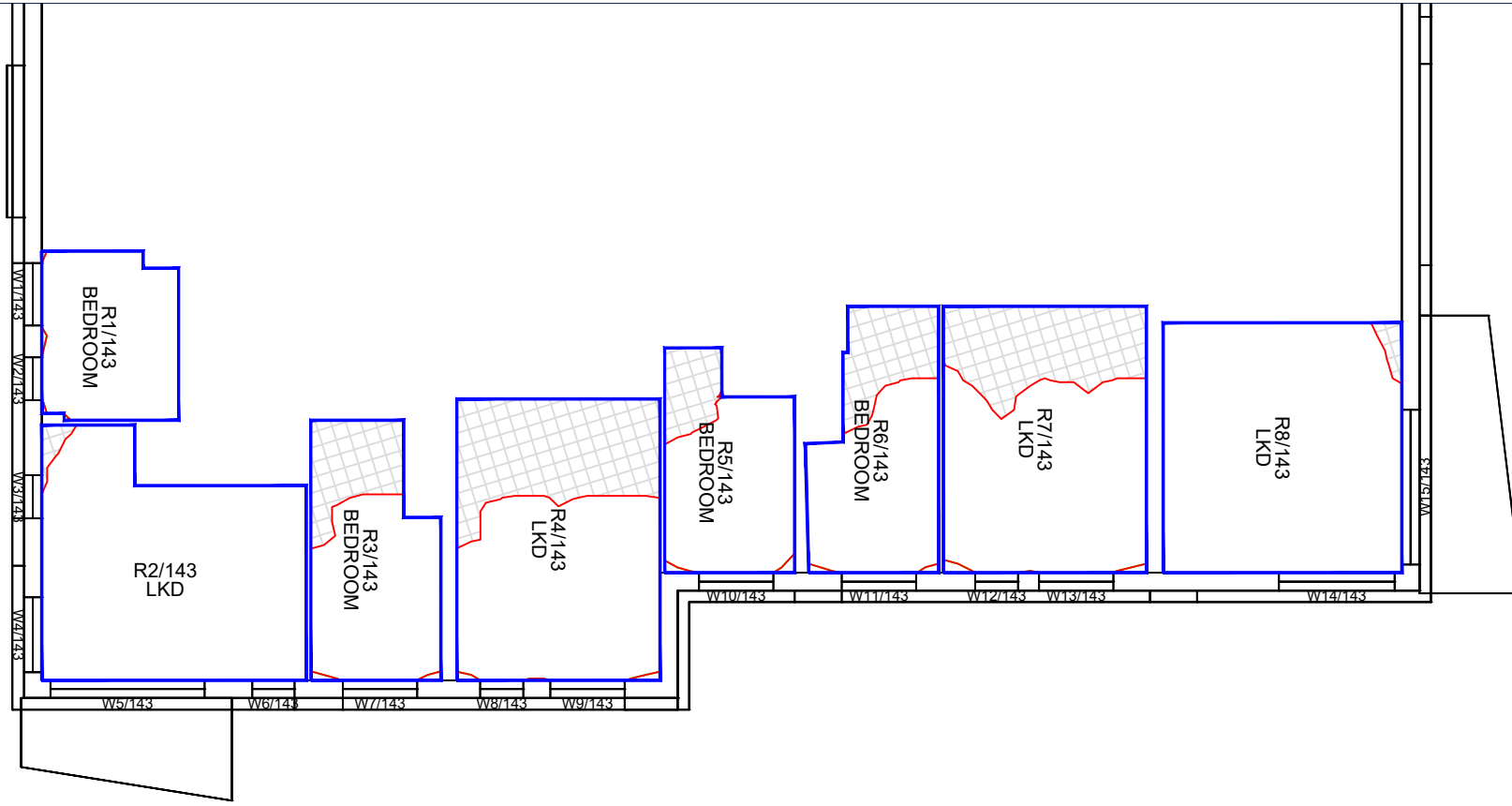
Dwg No: P2654/NSL/02

Rel: 03





Second Floor



Third Floor

Sources: Woods Hardwick  
Site Survey  
Drawings - 0189-7-8598-870B, 0189-7-851C-854C

Accucities Ltd  
3D CAD Model of Site & Surroundings  
001718\_Woking Football Club\_HD\_MASTER.dwg

Woking Planning Portal - Planning Application Drawings  
PLAN/2013/0659 - Hazel House, Beech House, 54-66 Westfield Ave  
PLAN/2019/0463 - Ivylea  
PLAN/2006/0558 - Cotswolds

Leach Rhodes Walker Architects  
Proposed Scheme Model (received 15/03/21)  
7884 - Master Model 2.skp

**Key:**

- Existing NSL Contour
- Proposed NSL Contour
- Region of Loss / Gain
- Main Habitable Room
- Non-Habitable Room

**Project:** Woking Football Club  
Woking  
Surrey

**Title:** Daylight & Sunlight Contours  
Proposed Scheme 15/03/21  
1 to 26 Hazel House

Scheme Confirmed: -

Date: -

Drawn By: SDJ

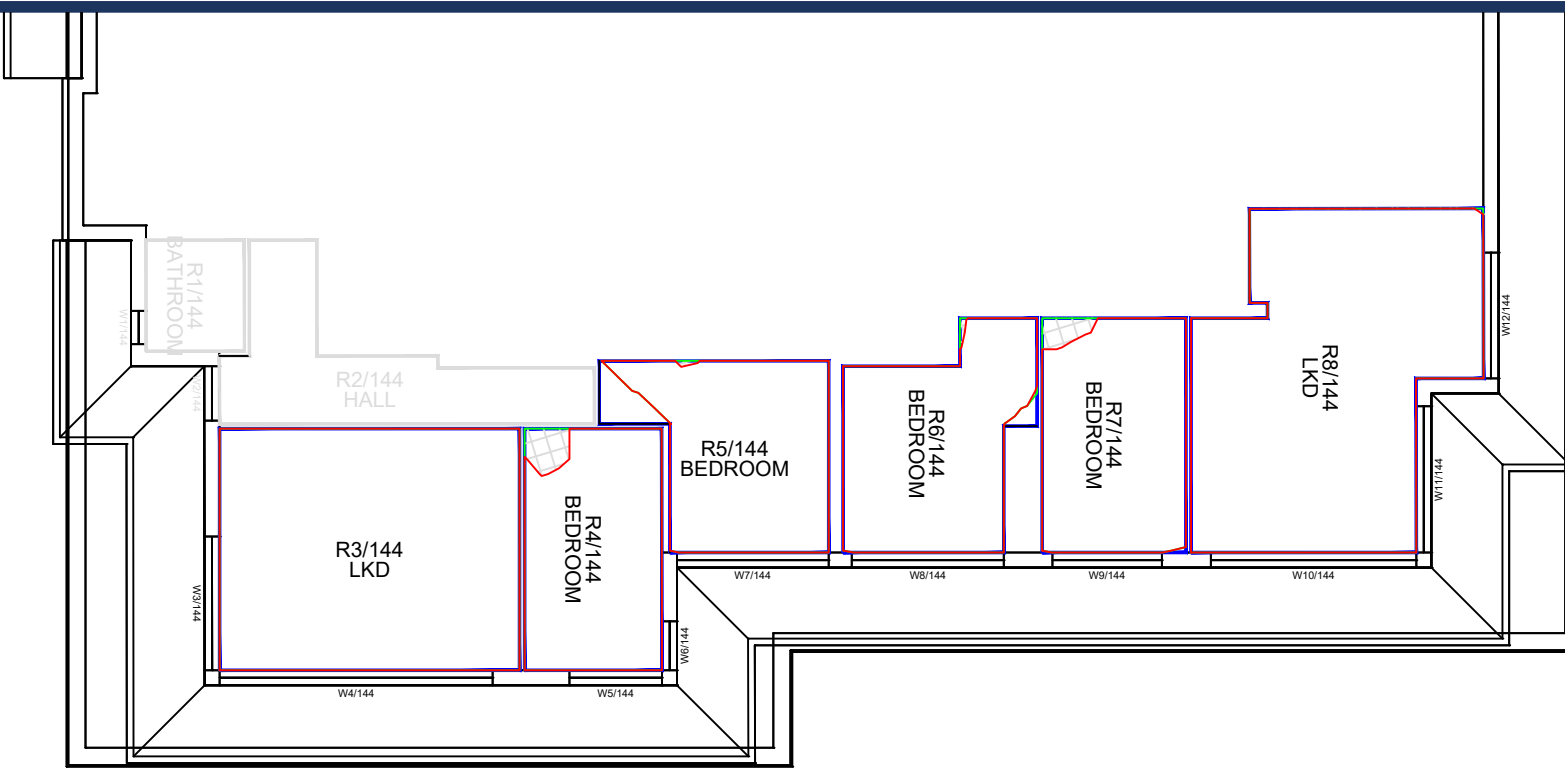
Scale: 1:150

Date: Mar 21

Dwg No: P2654/NSL/03

Rel: 03





Fourth Floor

Sources: Woods Hardwick  
Site Survey  
Drawings - 0189-7-8598-870B, 0189-7-851C-854C

Accucities Ltd  
3D CAD Model of Site & Surroundings  
001718\_Woking Football Club\_HD\_MASTER.dwg

Woking Planning Portal - Planning Application Drawings  
PLAN/2013/0659 - Hazel House, Beech House, 54-66 Westfield Ave  
PLAN/2019/0463 - Ivylea  
PLAN/2006/0558 - Cotswolds

Leach Rhodes Walker Architects  
Proposed Scheme Model (received 15/03/21)  
7884 - Master Model 2.skp

Key:

- Existing NSL Contour
- Proposed NSL Contour
- Region of Loss / Gain
- Main Habitable Room
- Non-Habitable Room

Project: Woking Football Club  
Woking  
Surrey

Title: Daylight & Sunlight Contours  
Proposed Scheme 15/03/21  
1 to 26 Hazel House

Scheme Confirmed: -

Date: -

Drawn By: SDJ

Scale: 1:150

Date: Mar 21

Dwg No: P2654/NSL/04

Rel: 03







Sources: Woods Hardwick  
 Site Survey  
 Drawings - 0189-7-8598-8708, 0189-7-851C-854C

Accucities Ltd  
 3D CAD Model of Site & Surroundings  
 001718\_Woking Football Club\_HD\_MASTER.dwg

Woking Planning Portal - Planning Application Drawings  
 PLAN/2013/0659 - Hazel House, Beech House, 54-66 Westfield Ave  
 PLAN/2019/0463 - Ivylea  
 PLAN/2006/0558 - Cotswolds

Leach Rhodes Walker Architects  
 Proposed Scheme Model (received 15/03/21)  
 7884 - Master Model 2.skp

Key:

Scheme Confirmed: -

Project: Woking Football Club  
 Woking  
 Surrey

Date: -

Drawn By: SDJ

Scale: NTS

Date: Mar 21

Title: Photograph of Hazel House

Dwg No: P2654/P/01

Rel: 03

