

**APPENDIX F – Beech House: Tabular VSC, ADF, NSL Results, Window Maps and
NSL Contour Plots**



DAYLIGHT ANALYSIS

WOKING FOOTBALL CLUB, WOKING
EXISTING vs APPEAL SCHEME
P2654 - rel3

DAYLIGHT

Room	Room Use	Window	Existing VSC	Proposed VSC	Loss	%Loss
1 TO 12 BEECH HOUSE						
R1/120	BEDROOM	W1/120	29.71	22.31	7.40	24.91
R2/120	LKD	W2/120	27.97	17.93	10.04	35.90
R2/120	LKD	W3/120	26.83	16.95	9.88	36.82
R3/120	BEDROOM	W4/120	37.07	25.59	11.48	30.97
R4/120	BEDROOM	W5/120	37.32	25.08	12.24	32.80
R4/120	BEDROOM	W6/120	21.42	18.12	3.30	15.41
R3/121	BEDROOM	W3/121	36.51	28.20	8.31	22.76
R4/121	BEDROOM	W4/121	30.49	23.79	6.70	21.97
R5/121	LKD	W5/121	28.74	19.63	9.11	31.70
R5/121	LKD	W6/121	28.13	19.20	8.93	31.75
R6/121	BEDROOM	W7/121	38.19	27.89	10.30	26.97
R7/121	BEDROOM	W8/121	38.36	27.35	11.01	28.70
R7/121	BEDROOM	W9/121	24.51	21.38	3.13	12.77
R3/122	BEDROOM	W3/122	36.64	29.30	7.34	20.03
R4/122	BEDROOM	W4/122	30.71	24.89	5.82	18.95
R5/122	LKD	W5/122	37.45	29.21	8.24	22.00
R5/122	LKD	W6/122	36.89	28.60	8.29	22.47
R6/122	BEDROOM	W7/122	37.75	28.97	8.78	23.26
R7/122	BEDROOM	W8/122	37.84	28.46	9.38	24.79
R7/122	BEDROOM	W9/122	27.33	24.44	2.89	10.57
R2/123	BEDROOM	W2/123	24.57	23.54	1.03	4.19
R2/123	BEDROOM	W3/123	24.78	18.81	5.97	24.09
R2/123	BEDROOM	W4/123	23.05	17.09	5.96	25.86
R4/123	BEDROOM	W6/123	8.80	7.55	1.25	14.20
R4/123	BEDROOM	W7/123	19.42	14.77	4.65	23.94
R5/123	LKD	W8/123	21.39	14.97	6.42	30.01
R5/123	LKD	W9/123	17.94	11.24	6.70	37.35
R5/123	LKD	W10/123	20.28	17.68	2.60	12.82
R5/123	LKD	W11/123	18.95	18.84	0.11	0.58



DAYLIGHT ANALYSIS

WOKING FOOTBALL CLUB, WOKING
EXISTING vs APPEAL SCHEME
P2654 - rel3

DAYLIGHT

Room	Room Use	Window	Existing		Proposed		Total Loss	%Loss
			ADF	Total	ADF	Total		
R1/120	BEDROOM	W1/120	3.45	3.45	2.79	2.79	0.66	19.15
R2/120	LKD	W2/120	1.59		1.07			
R2/120	LKD	W3/120	1.55	3.14	1.06	2.13	1.01	32.11
R3/120	BEDROOM	W4/120	3.44	3.44	2.52	2.52	0.92	26.80
R4/120	BEDROOM	W5/120	3.28		2.35			
R4/120	BEDROOM	W6/120	0.55	3.83	0.52	2.87	0.97	25.18
R3/121	BEDROOM	W3/121	3.82	3.82	3.08	3.08	0.75	19.57
R4/121	BEDROOM	W4/121	3.50	3.50	2.90	2.90	0.60	17.10
R5/121	LKD	W5/121	1.61		1.15			
R5/121	LKD	W6/121	1.58	3.20	1.14	2.30	0.90	28.11
R6/121	BEDROOM	W7/121	3.53	3.53	2.70	2.70	0.84	23.68
R7/121	BEDROOM	W8/121	3.37		2.52			
R7/121	BEDROOM	W9/121	0.63	4.00	0.60	3.12	0.88	21.89
R3/122	BEDROOM	W3/122	3.41	3.41	2.76	2.76	0.64	18.88
R4/122	BEDROOM	W4/122	3.16	3.16	2.64	2.64	0.52	16.44
R5/122	LKD	W5/122	1.92		1.51			
R5/122	LKD	W6/122	1.89	3.80	1.50	3.01	0.79	20.82
R6/122	BEDROOM	W7/122	3.14	3.14	2.44	2.44	0.70	22.37
R7/122	BEDROOM	W8/122	3.00		2.28			
R7/122	BEDROOM	W9/122	0.62	3.62	0.60	2.88	0.74	20.34
R2/123	BEDROOM	W2/123	4.47		4.33			
R2/123	BEDROOM	W3/123	1.19		0.94			
R2/123	BEDROOM	W4/123	1.17	6.82	0.91	6.18	0.65	9.48
R4/123	BEDROOM	W6/123	0.86		0.81			
R4/123	BEDROOM	W7/123	4.25	5.11	3.44	4.25	0.86	16.82
R5/123	LKD	W8/123	0.58		0.43			
R5/123	LKD	W9/123	1.19		0.81			
R5/123	LKD	W10/123	2.37		2.12			
R5/123	LKD	W11/123	2.11	6.24	2.10	5.45	0.79	12.58



DAYLIGHT ANALYSIS

WOKING FOOTBALL CLUB, WOKING
EXISTING vs APPEAL SCHEME
Omitting Balcony and Roof Overhang Effects
P2654 - rel3

Room	Room Use	Window	Existing VSC	Proposed VSC	Loss	%Loss
1 TO 12 BEECH HOUSE						
R1/120	BEDROOM	W1/120	29.72	22.32	7.40	24.90
R2/120	LKD	W2/120	36.80	26.17	10.63	28.89
R2/120	LKD	W3/120	35.63	24.92	10.71	30.06
R3/120	BEDROOM	W4/120	37.12	25.64	11.48	30.93
R4/120	BEDROOM	W5/120	37.38	25.13	12.25	32.77
R4/120	BEDROOM	W6/120	22.70	19.40	3.30	14.54
R3/121	BEDROOM	W3/121	36.64	28.29	8.35	22.79
R4/121	BEDROOM	W4/121	30.51	23.81	6.70	21.96
R5/121	LKD	W5/121	37.81	28.26	9.55	25.26
R5/121	LKD	W6/121	37.18	27.56	9.62	25.87
R6/121	BEDROOM	W7/121	38.22	27.93	10.29	26.92
R7/121	BEDROOM	W8/121	38.39	27.37	11.02	28.71
R7/121	BEDROOM	W9/121	25.74	22.61	3.13	12.16
R3/122	BEDROOM	W3/122	36.72	29.38	7.34	19.99
R4/122	BEDROOM	W4/122	30.89	25.07	5.82	18.84
R5/122	LKD	W5/122	37.45	29.21	8.24	22.00
R5/122	LKD	W6/122	36.89	28.60	8.29	22.47
R6/122	BEDROOM	W7/122	37.75	28.97	8.78	23.26
R7/122	BEDROOM	W8/122	37.85	28.47	9.38	24.78
R7/122	BEDROOM	W9/122	28.40	25.51	2.89	10.18
R2/123	BEDROOM	W2/123	39.33	38.30	1.03	2.62
R2/123	BEDROOM	W3/123	39.14	33.16	5.98	15.28
R2/123	BEDROOM	W4/123	38.59	32.63	5.96	15.44
R4/123	BEDROOM	W6/123	23.57	22.32	1.25	5.30
R4/123	BEDROOM	W7/123	29.48	24.83	4.65	15.77
R5/123	LKD	W8/123	31.39	24.97	6.42	20.45
R5/123	LKD	W9/123	34.41	27.71	6.70	19.47
R5/123	LKD	W10/123	35.49	32.88	2.61	7.35
R5/123	LKD	W11/123	32.68	32.58	0.10	0.31



NSL ANALYSIS

WOKING FOOTBALL CLUB, WOKING
EXISTING vs APPEAL SCHEME

P2654 - rel3

NSL

Room	Room Use	Whole Room sq ft	Existing sq ft	Proposed sq ft	Loss sq ft	%Loss
------	----------	------------------	----------------	----------------	------------	-------

1 TO 12 BEECH HOUSE

R1/120	BEDROOM	117.3	112.3	108.0	4.3	3.8
R2/120	LKD	275.5	272.5	271.1	1.4	0.5
R3/120	BEDROOM	150.4	144.8	119.3	25.5	17.6
R4/120	BEDROOM	154.1	146.1	134.1	12.1	8.3
R3/121	BEDROOM	133.2	129.0	128.9	0.1	0.1
R4/121	BEDROOM	117.3	112.3	112.3	0.0	0.0
R5/121	LKD	275.5	272.4	272.3	0.1	0.0
R6/121	BEDROOM	150.4	144.8	130.1	14.7	10.2
R7/121	BEDROOM	154.1	146.1	137.5	8.6	5.9
R3/122	BEDROOM	133.2	130.1	130.1	0.0	0.0
R4/122	BEDROOM	117.3	113.2	113.2	0.0	0.0
R5/122	LKD	275.5	272.5	272.5	0.0	0.0
R6/122	BEDROOM	150.4	144.8	138.6	6.2	4.3
R7/122	BEDROOM	154.1	146.2	140.1	6.1	4.2
R2/123	BEDROOM	140.6	140.6	140.6	0.0	0.0
R4/123	BEDROOM	130.1	126.2	126.2	0.0	0.0
R5/123	LKD	392.2	391.6	391.6	0.0	0.0



Sources: Woods Hardwick
 Site Survey
 Drawings - 0189-7-8598-870B, 0189-7-851C-854C

Accucities Ltd
 3D CAD Model of Site & Surroundings
 001718_Woking Football Club_HD_MASTER.dwg

Woking Planning Portal - Planning Application Drawings
 PLAN/2013/0659 - Hazel House, Beech House, 54-66 Westfield Ave
 PLAN/2019/0463 - Ivylea
 PLAN/2006/0558 - Cotswolds

Leach Rhodes Walker Architects
 Proposed Scheme Model (received 01/03/21)
 Site 1&2 Sektchup.skp

Key:

Scheme Confirmed:	-
Date:	-

Project: Woking Football Club
 Woking
 Surrey

Drawn By:	SDJ
Scale:	NTS
Date:	Mar 21

Title: Window Map
 1-12 Beech House

Dwg No:	P2654/WM/03
Rel:	01





Sources: Woods Hardwick
Site Survey
Drawings - 0189-7-8598-8708, 0189-7-851C-854C

Accucities Ltd
3D CAD Model of Site & Surroundings
001718_Woking Football Club_HD_MASTER.dwg

Woking Planning Portal - Planning Application Drawings
PLAN/2013/0659 - Hazel House, Beech House, 54-66 Westfield Ave
PLAN/2019/0463 - Ivylea
PLAN/2006/0558 - Cotswolds

Leach Rhodes Walker Architects
Proposed Scheme Model (received 01/03/21)
Site 1&2 Sektchup.skp

Key:

SURROUNDING BUILDINGS REMOVED FOR CLARITY

Scheme Confirmed: -

Date: -

Project: Woking Football Club
Woking
Surrey

Drawn By: SDJ

Scale: NTS

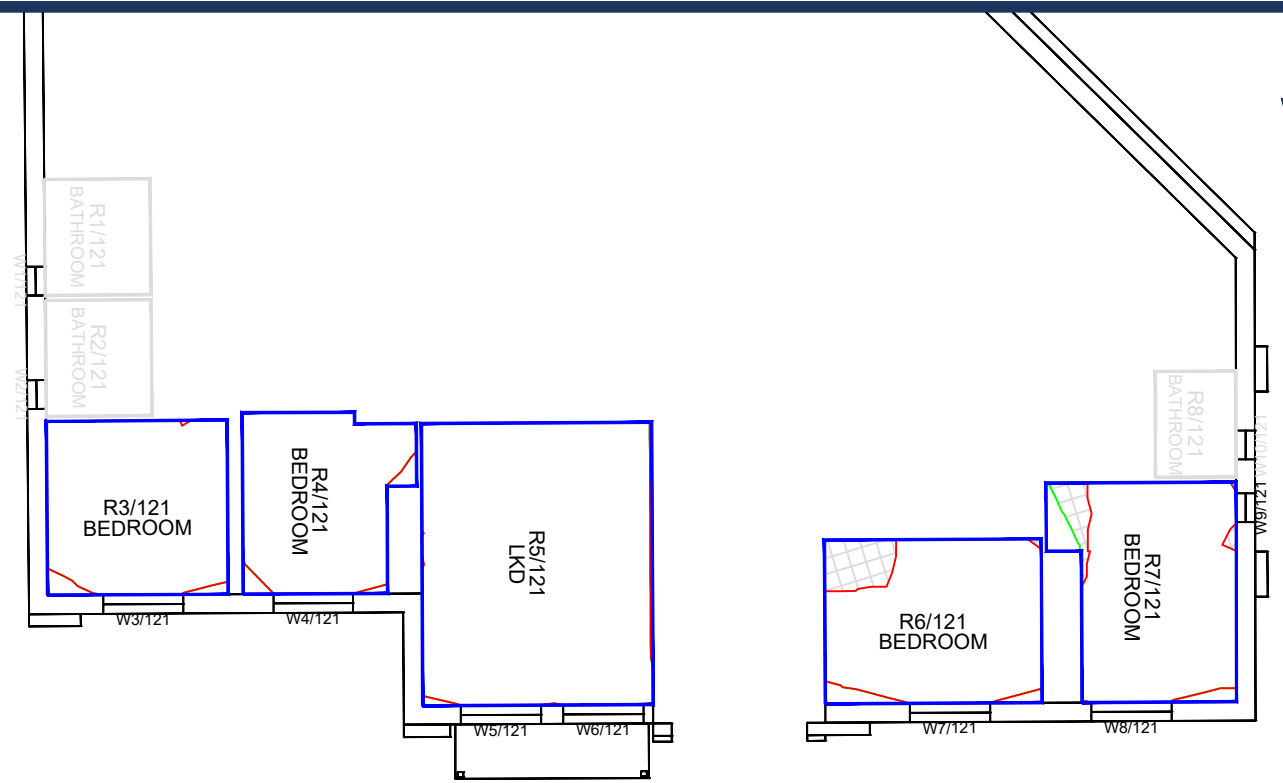
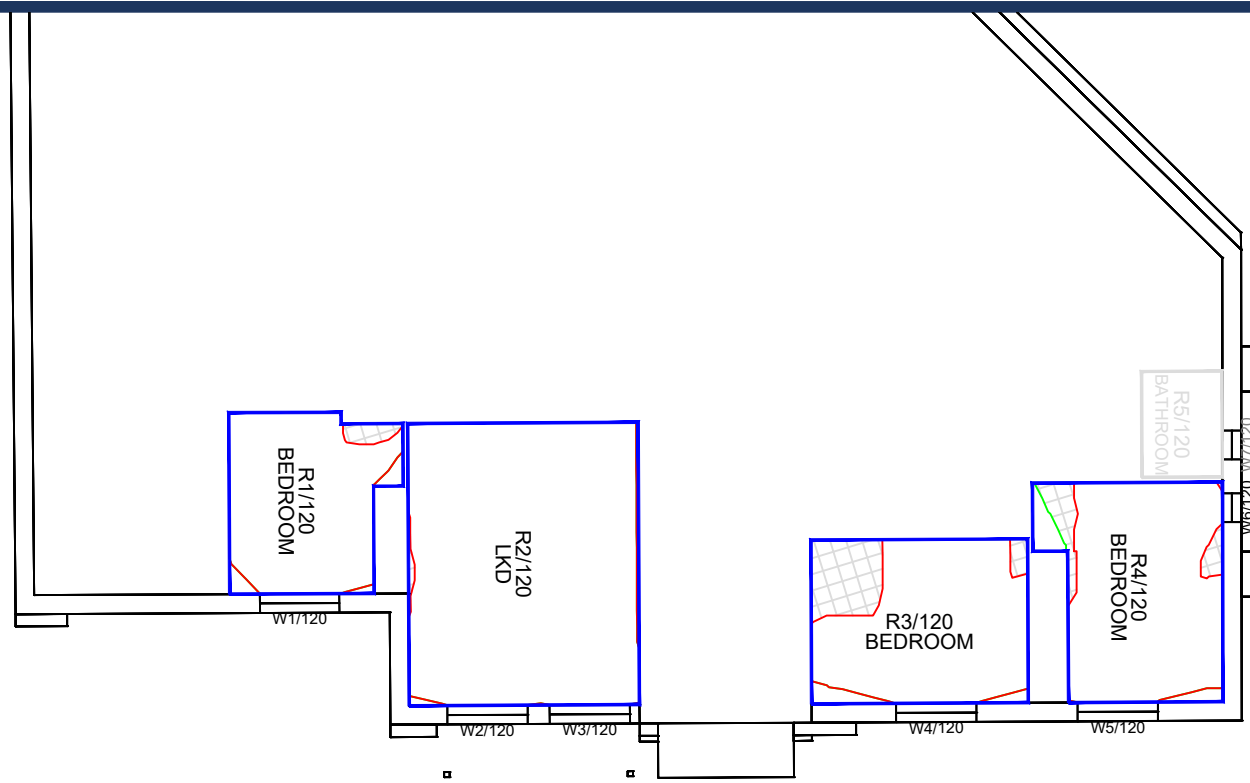
Date: Mar 21

Title: Window Map
1-12 Beech House

Dwg No: P2654/WM/04

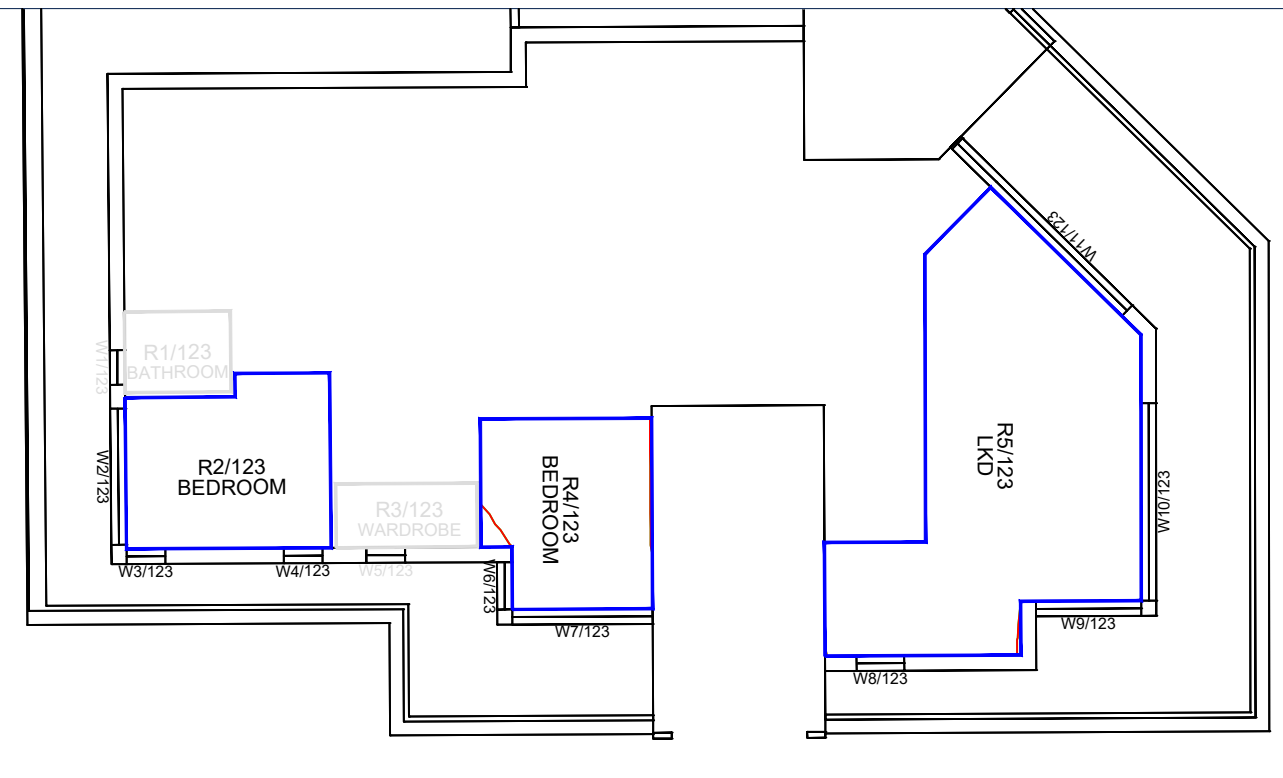
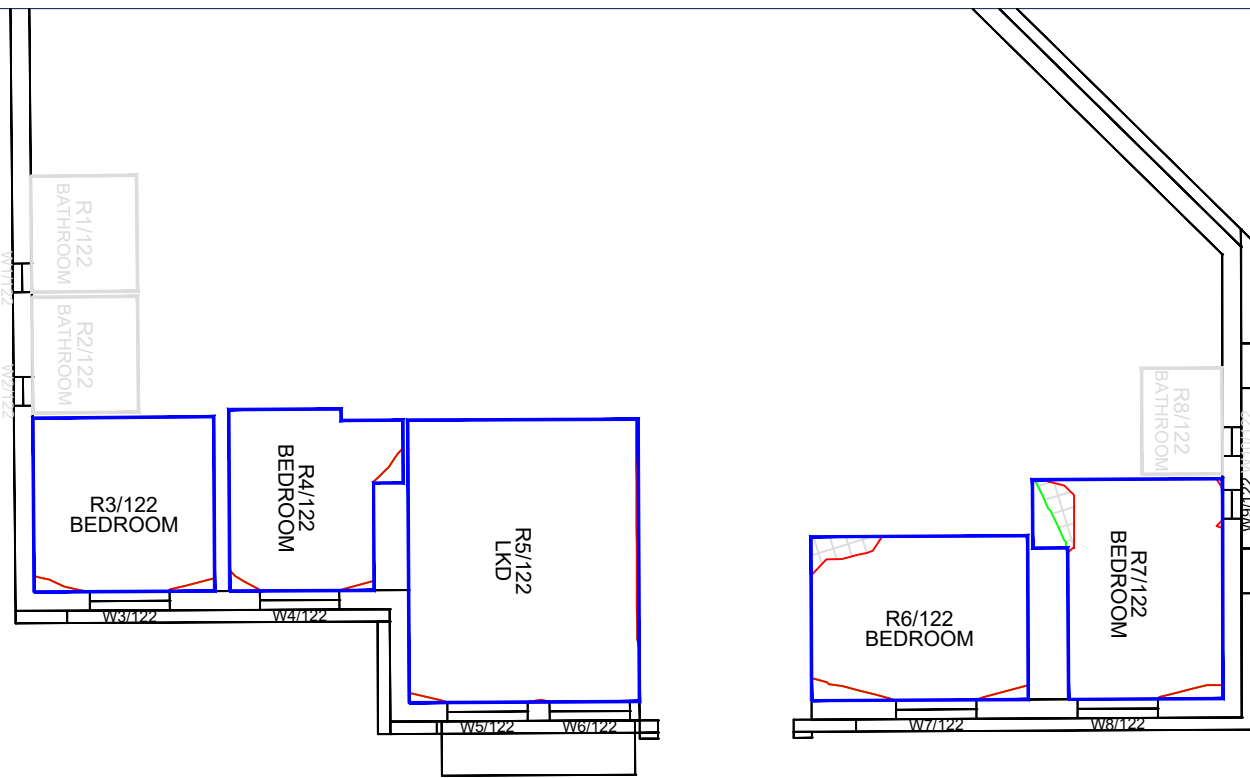
Rel: 01





Ground Floor

First Floor



Second Floor

Third Floor

Sources: Woods Hardwick
Site Survey
Drawings - 0189-7-8598-870B, 0189-7-851C-854C

Accuties Ltd
3D CAD Model of Site & Surroundings
001718_Woking Football Club_HD_MASTER.dwg

Woking Planning Portal - Planning Application Drawings
PLAN/2013/0659 - Hazel House, Beech House, 54-66 Westfield Ave
PLAN/2019/0463 - Ivylea
PLAN/2006/0558 - Cotswolds

Leach Rhodes Walker Architects
Proposed Scheme Model (received 15/03/21)
7884 - Master Model 2.skp

- Key:
- Existing NSL Contour
 - Proposed NSL Contour
 - Region of Loss / Gain
 - Main Habitable Room
 - Non-Habitable Room

Project: Woking Football Club
Woking Survey

Title: Daylight & Sunlight Contours
Proposed Scheme 15/03/21
1 to 12 Beech House

Scheme Confirmed: -

Date: -

Drawn By: SDJ

Scale: 1:150

Date: Mar 21

Dwg No: P2654/NSL/01

Rel: 03

